

**SQUASH NEW ZEALAND  
2007 Annual Report**

# CONTENTS

## REPORTS

Squash New Zealand Officials 2006 - 2007	3
Squash New Zealand Honours Board 2007	4
Chairman's Review	6
CEO's Report	8
High Performance Programme	11
2007 Season Results	17
World Squash Federation Report	23
Grading and Statistics Report	24
Refereeing Report	26
Club of the Year - Wellsford Squash Club	27
Club Kelburn	28
National Squash Centre	29
Masters Report	30

## FINANCIALS

Audit Report	34
Consolidated Statement of Financial Position	35
Consolidated Statement of Financial Performance	36
Notes to the Financial Accounts	38

## MEMBERSHIP RETURNS

Northland, Auckland	43
Waikato, Bay of Plenty	44
Eastern, Central	45
Wellington, Canterbury	46
Midlands, Otago, Southland	47

### Squash New Zealand

Office: UNITEC, Gate 3, Carrington Road, Mt Albert, Auckland

Postal: PO Box 21 781, Henderson, Auckland.

Telephone: 64-9 815 0970. Facsimile: 64-9-815 0971

Email: [squashnz@squashnz.co.nz](mailto:squashnz@squashnz.co.nz) Website: [www.squashnz.co.nz](http://www.squashnz.co.nz)





# **SQUASH NEW ZEALAND ANNUAL REPORT 2007**



*Auckland Junior Boys and Girl's-Winners NZ Inter-District Teams Event and Gifford Trophy. L to R: Graham Jamieson (Mgr), Lance Beddoes; Michael Blanchard, Cameron Jamieson, Lana Harrison, Lui Syder, Alex Grayson, Kerry Wickett, Crystal Tabata, Elizabeth Graham, Georgina Shelton-Agar, Dee Styles (Mgr).*



*Masterton B Grade Women-2007 National SuperChamps Winners  
From left to right, standing: Libby Paterson, Gerry Brooking (Coach), Rewa Pomare. From left, sitting: Helen Gibbs, Marg Patete (Manager), Bridget Minehan.*

## Squash New Zealand Officials 2006-2007

### PATRON

Dame Susan Devoy

### EXECUTIVE COUNCIL

Jim O'Grady (Chairman), Neil McAra, John Sangster, Warren Patterson, Mark Dunwoodie,  
Gerard Decourcy (Resigned April) Wayne Werder

### PROGRAMME DIRECTORS

Grading & Statistics: Steve Scott; Masters: Judy Cooper; Refereeing: Jan McAra

### SELECTORS

Senior/Junior: Michel Galloway, Paul Kennett, Nicky Dunlop, Aileen Buscke,  
Masters: Judy Cooper (Convenor), Wayne Seebeck, Sandra Tinkler

### NATIONAL STATISTICIANS

Women: Vivienne Brumby, Men: Willie Bicknell

### NATIONAL OFFICE

Chief Executive: Mike Thompson, Administration Manager: Vivienne Brumby  
High Performance Assistant/Funding: Kerry Torrie,  
Receptionist: Jan Lewis,  
Contract Accountant: Hamon & Associates

### HON. SOLICITOR

Michael Sumpter

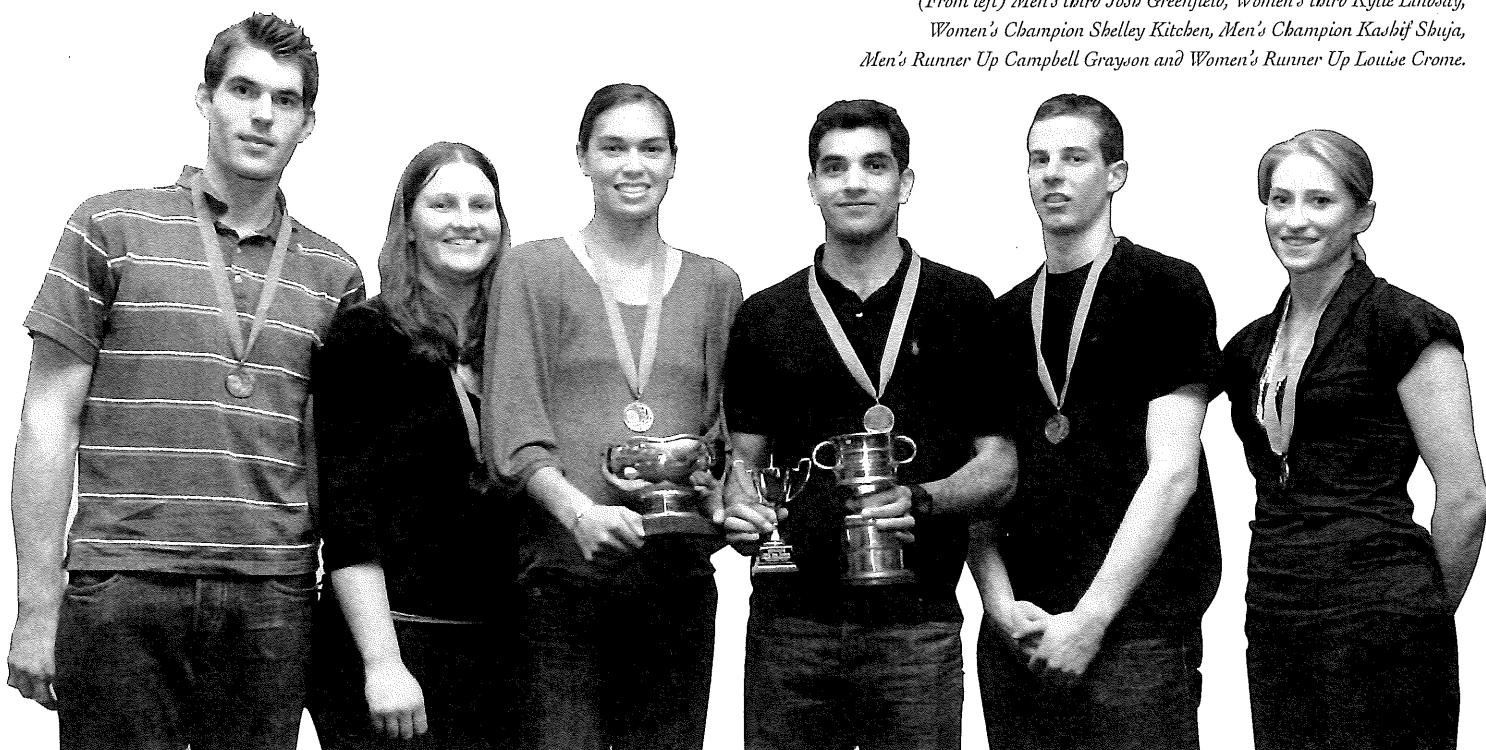
### AUDITOR

McGregor, Bailey & Co

### LIFE MEMBERS

Neven Barbour, Bryden Clarke, Norman Coe, Murray Day, Dame Susan Devoy, Dardir El Bakary,  
Butch Gifford, Don Green, Bill Murphy, Ross Norman, Susie Simcock, Michael Sumpter

*2007 NZ Championship Winners and Placegetters.  
(From left) Men's third Josh Greenfield, Women's third Kylie Lindsay,  
Women's Champion Shelley Kitchen, Men's Champion Kashif Shuja,  
Men's Runner Up Campbell Grayson and Women's Runner Up Louise Crome.*



## Squash New Zealand Honours Board 2006-2007

<b>PERSONALITY OF THE YEAR</b>	2006 Shelley Kitchen	
<b>CHAIRMAN'S AWARD</b>	2006 World Junior Men's Champs Organising Committee	
<b>CLUB OF THE YEAR</b>	Wellsford Squash Club	
<b>NEW ZEALAND NATIONAL MEN'S SQUASH CHAMPION</b>	Kashif Shuja	Royal Oak
<b>NEW ZEALAND NATIONAL WOMEN'S SQUASH CHAMPION</b>	Shelley Kitchen	Browns Bay
<b>MOST IMPROVED SENIOR PLAYERS</b>		
Female	Lisa Cowlard	Red Beach
Male	Evan Williams	Tawa
<b>NEW ZEALAND SENIOR INTER-DISTRICT TEAMS CHAMPIONSHIP</b>		
Women	Auckland	
Men	Wellington	
<b>NEW ZEALAND JUNIOR MEN'S SQUASH CHAMPION</b>	Evan Williams	Tawa
<b>NEW ZEALAND JUNIOR WOMEN'S SQUASH CHAMPION</b>	Amanda Cranston	Ohakune
<b>MOST IMPROVED JUNIOR PLAYERS</b>		
Female	Joelle King	North Shore
Male	Evan Williams	Tawa
<b>NEW ZEALAND JUNIOR INTER-DISTRICT TEAMS CHAMPIONSHIP</b>		
Men	Auckland	
Women	Auckland	
<b>DEREK COOKE MEMORIAL TROPHY FOR REFEREEING</b>	Jan McAra	Southland
<b>NEW ZEALAND COACH OF THE YEAR</b>	Julie Hawkes	Auckland
<b>NEW ZEALAND JUNIOR COACH OF THE YEAR</b>	Ellis Matthews	Waikato
<b>NEW ZEALAND MASTERS CHAMPIONSHIP</b>		
35+ Men	Scott Gardiner	
Women	Amanda Hopps (Aus)	
40+ Men	Gary Duberly	
Women	Cindy Meintjes (Aus)	
45+ Men	Geoff Davenport (Aus)	
Women	Kay Newman	
50+ Men	Charlie Mayhew	
Women	Sandra Egan	
55+ Men	Wayne Seebeck	
Women	Sue Volzke (Aus)	
60+ Men	Brian Cook (Aus)	
Women	Kaye Jackson	
65+ Men	Richard Purser	
Women	Patsy Flemming	
70+ Men	Maurie Peters	
<b>NEW ZEALAND MASTERS INTER-DISTRICT TEAM CHAMPIONSHIP</b>	Canterbury	

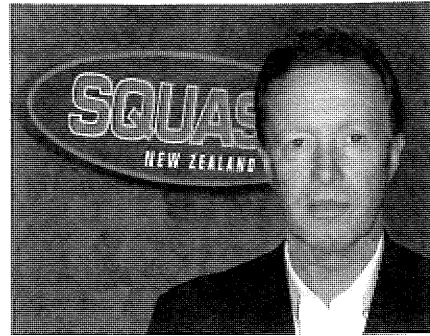


*Maori TV interviewing NZ Men's finalists  
(from left) Kashif Shuja and Campbell Grayson.*



**Squash New Zealand  
2007 Review & Reports**

## Chairman's Review



The last twelve months have been a challenging time for squash. The departure of a CEO and other key staff in close succession left a major gap in the management structure of our sport.

Inevitably there were going to be repercussions as a result of these events and a number of programme areas were affected primarily because we lacked the personnel to implement the activities. The board has taken steps to rectify these situations and they will be addressed in 2008 with the expectation that the forecast targets will be met.

The later part of 2006 and early 2007 was a particularly challenging period for the organization. Special thanks must go to the staff in the national office - Viv, Kerry and Jan who did an outstanding job of managing the business in the absence of a CEO. The benefit of experience, wisdom and common sense got us through a tough period and I thank them for their efforts.

The immediate task was to recruit a new CEO and in March this year Mike Thompson was appointed to the position. It was a steep learning curve but Mike has recognised the challenges and made significant progress during the year and his knowledge and understanding of squash continues to grow day by day.

His first challenge was to secure funding for our high performance programme from SPARC. While a very comprehensive plan had been developed by Brett Reid, the former high performance manager, the departure of key people in our high performance programme and a tenuous relationship caused SPARC to reassess our ability to deliver the stated outcomes. Urgent action was required and with the help of the SNZ high performance advisory group including Mark Dunwoodie, Neven Barbour and Wayne Werder, along with Paul Heron and Chris Bullen from SPARC, the plan was reviewed. To assist with this process Robin Espie, a former SNZ CEO, was engaged to review, update and represent the high performance plan.

Robin's contribution has been invaluable. His background and intuitiveness enabled SNZ to effectively review and improve the plan and I cannot underestimate the contribution that Robin has made to squash. It is reassuring to know that there are many talented and passionate people in this sport who are prepared to lend a hand when the going gets tough.

I would also like to acknowledge the support and co-

operation from SPARC. In particular Paul Heron, our relationship manager, who has worked with the HPAG and with Mike Thompson to ensure that squash has had every opportunity to fully present its case. He has been approachable, supportive and responsive to the needs of our sport and without him life would have been much more difficult.

With funding secured, our elite athletes can now focus on the Commonwealth Games in Delhi. Our goal is not only to perform well in 2010 but ultimately to achieve top level results at World Championship events. The high performance plan is the vision document to achieve success at world level and it is important that Squash New Zealand is committed to a long term view of sustainable high performance.

Our top players continue to do well both here and overseas and all have achieved career high rankings. They provide the profile squash needs and we congratulate the players on their individual performances during the last twelve months. Of particular note, I wish to congratulate the Junior Women's Squash team who competed very successfully in Hong Kong this year. The team of Joelle King, Lana Harrison, Amanda Cranston and Kerry Wickett were third in the teams competition and Joelle King was third in the individual championship. It was an outstanding result and special thanks must go to their coach and manager, Julie Hawkes. In the absence of key high performance personnel Julie provided the management, coaching, training and planning for the event with the assistance of Lindsey Walters. We were particularly fortunate to have Carol Owens who coaches Joelle travel to Hong Kong to assist Joelle in the individuals. A great result was achieved.

On the national scene several events stand out in 2007. The Cousins Shield / Mitchell Cup held at Remuera ranks among the best. A strong entry, fierce competition, great venue and outstanding organisation contributed to one of the most successful events on record. Congratulations to everyone at Remuera who made this a memorable event.

The nationals were held in Palmerston North this year at SquashGym. The club has some of the best facilities in the country and along with a great management team the nationals this year set a standard that will be hard to beat. With assistance from SNZ, the glass court and live television coverage were arranged, and the result was an exceptional event. Congratulations to Shelley and Kashif



on their New Zealand titles and well done to the team at SquashGym.

For some years now the national body and districts have supported and promoted a district development strategy. The plan has been delivered by squash development officers employed by the districts and funded jointly by SNZ and the districts. This year a change in the funding arrangement has seen the national body fund the districts based on agreed development plans with a percentage of the funding guaranteed and the balance dependent on results.

The districts have effectively been given more autonomy to manage their plans but funding is still contingent on deliverable results. The next twelve months will demonstrate how successful this approach has been and will have a bearing on the strategic direction the board may take with regard to development funding in the future.

District and club development remains a key part of the strategic vision and the challenge for the national body is to have a plan delivering effective products and services that result in growth. The strength of squash lies in the relationship between these three key groups and it is vital that the relationship remains healthy and intact.

In a new initiative the board has appointed a Game Development Manager to implement and facilitate various aspects of the operational plan. This is a new position and the key tasks involve coach and referee development, recruitment and retention of volunteers, Club development models, funding assistance, event management and squash in schools programmes. The appointment recognises the need for greater assistance with the delivery of some of our programme areas and will provide much needed help to clubs and districts.

In conclusion, I would like to thank everyone involved in squash who continues to make a positive difference and in particular the following people -

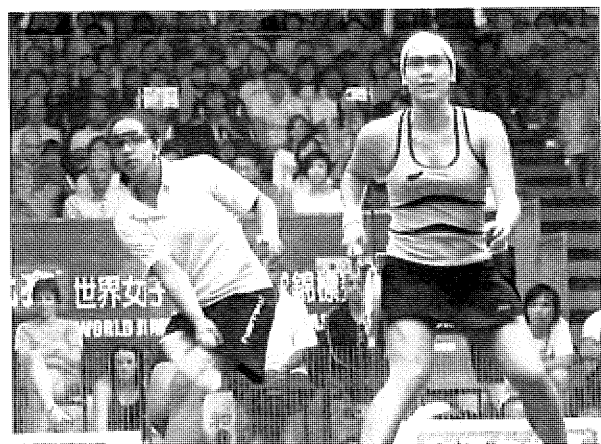
- The board - Neil McAra, John Sangster, Mark Dunwoodie, Warren Patterson and Wayne Werder for their efforts throughout the year. In particular I would like to acknowledge John Sangster's contribution over the last nine years. John is stepping down and his wisdom and experience has been greatly valued.
- Gerard DeCourcy - for his leadership and direction as chairman. Also congratulations on his appointment to

the role of vice president World Squash.

- Vivienne Brumby, Kerry Torrie and Jan Lewis who have done an outstanding job through some difficult times.
- Susie Simcock - for her ongoing passion and commitment to squash at a national and international level.
- The National Squash Centre Trust who administer our national facility.
- Neven Barbour - for his tireless contribution to squash.
- Our sponsors and funders - Dunlop, Honda, SPARC, NZ Academy of Sport, Maori Television, Southern Trust, Lion Foundation, Perry Foundation, Pub Charity, Caversham Foundation, Eureka Trust, The Trusts, Century Foundation, South Auckland Charitable Trust, ASB Community Trust.
- Rob Walker - for his continued enthusiasm and a very successful operation.
- Lastly to all our volunteers. Volunteers are the lifeblood and strength of our sport, without them we would not exist. So to all the people who have given freely of their time to make squash more enjoyable - thank you.

## JIM O'GRADY

### Chairman



*NZ's top junior girl Joelle King (right) in action at the World Juniors playing Egypt's Raneem El Welily. King eventually lost 4/9, 7/9, 2/9, and was placed third in the Individuals.*

## CEO's Report

Although I've only officially been in the role of Chief Executive for 'half' of the term of this report what I can provide is a brief overview of an extremely busy season personally and for Squash NZ as an organisation. Whilst having to deal with the frustrations of the reality in which we found ourselves in 2007 I can also reflect on the achievements of the year and look forward to an exciting future for our sport.

With the departure of 5 key staff since the end of last year, 2007 was always going to present a challenge. You simply do not lose the collective knowledge of Peter, Dave, Brett, Gary and Robbie without losing considerable momentum created by the previous structure. Fortunately Vivienne, Kerry and Jan have done a fantastic job in picking up areas of our business that were unfamiliar and keeping things ticking over while I got my feet under the desk. Before my arrival the organisation was forced to spread more of the load created by these departures. Apart from the staff, the Board and others really stepped up in filling the breach. This unrecognised contribution was key in maintaining a degree of 'business as usual'.

The season presented many challenges but also an opportunity to look, listen and observe the season in action through fresh eyes. Consequently I had many questions and was fortunate to have many willing and able to answer them!

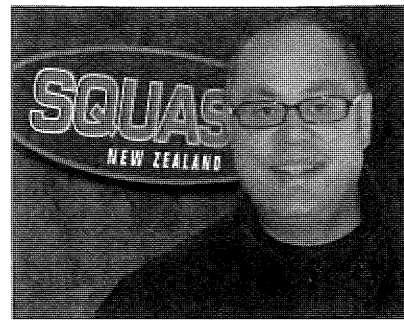
### Finance

The loss of staff and with that the ability to deliver some planned activity meant that we enjoyed a degree of financial flexibility. The years result is a reflection of some under budget expenditure but it also presented an opportunity to drive extra support into some key areas that I will mention later in this report.

Income levels fell between that of 2005 and 2006 and were under budget primarily in the area of grants funding. Delays in getting the District Funding Agreements signed did not allow us the time to seek budgeted support for this investment. Capital projects were also delayed which made up the balance of the deficit.

Expenditure was substantially down on the previous year and on budget. This was primarily in the areas of staffing, some planned activity, and administration.

The reported surplus will go into reserves untagged. Over the next year we will be reviewing our strategy and planning



with the comfort of knowing there is some resource available to direct in this direction if needed and more importantly gives us a strong liquid financial base which not many sports in NZ can claim to enjoy.

### High Performance

The results of 2007 are a testament to the dedication, talent and knowledge of a large number of people over a number of years. Building on the success of last year we celebrated career high professional rankings for our number one's Shelley Kitchen (9) and Kashif Shuja (41). Career highs were also celebrated by Jackie Hawkes (19) and Louise Crome (25).

A personal highlight was the return of our Junior Women World Championship Team bringing home a team bronze and Joelle King, an individual bronze medal (matching the achievement of her coach Carol Owens). To Joelle, Kerry, Lana and Amanda and to your coaches Julie, Lindsey and Carol, my heartfelt congratulations.

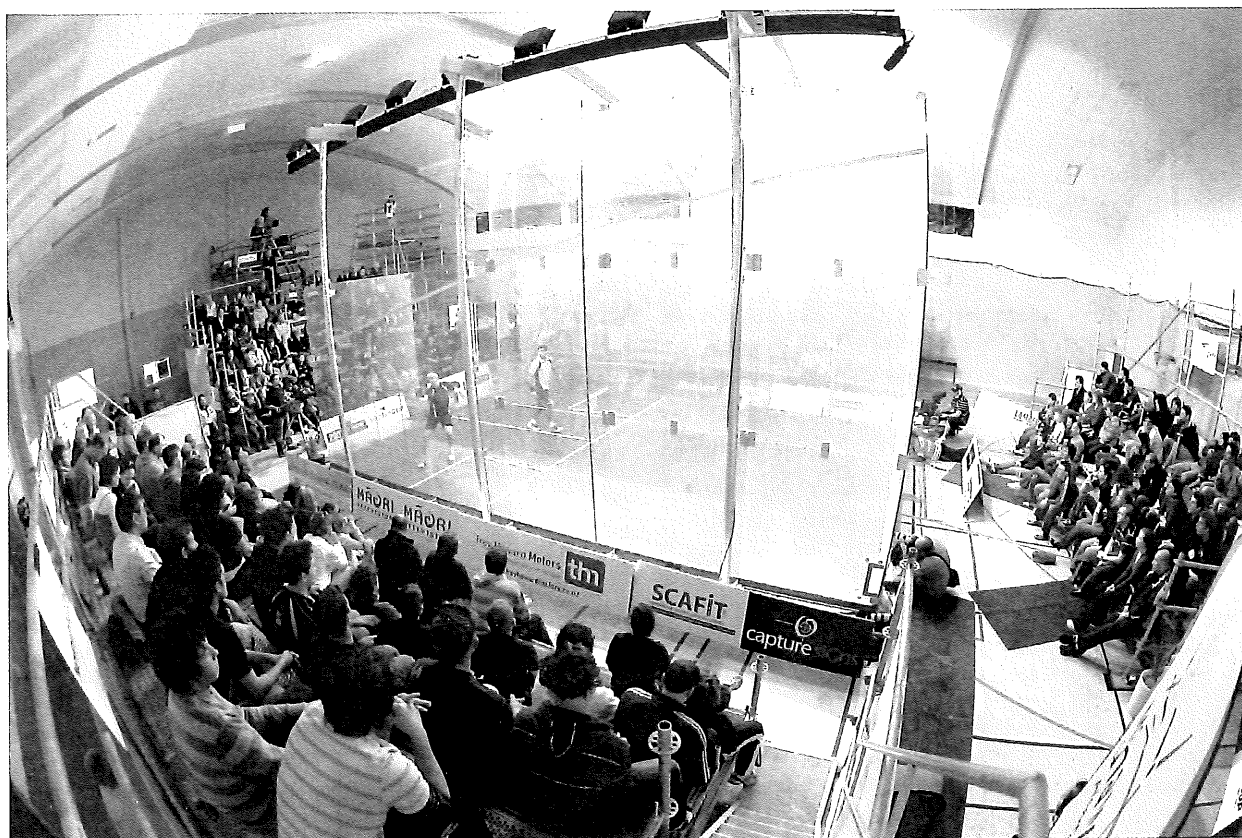
It is a real shame that we have to work so hard to have NZ appreciate and recognise your individual and collective efforts but that is a key area of focus for the future.

SPARC have confirmed their investment towards medal success at the Commonwealth Games 2010 (Project Delhi). This investment will ensure our identified medal capable athletes will receive the very best of support in their pursuit of success in India and in the intervening years.

We have also planned investment in our future elite to ensure we continue our tradition of success on the world stage.

I'd like to acknowledge the efforts of Paul Heron, Paul Smith and Chris Bullen from SPARC and to the High Performance Advisory Group, Robbie Wyatt and Lindsey Walters for their contribution in reconfirming SPARC's confidence in our ability to deliver international success and a special thanks to Robin Espie for helping to redraft our HP Strategy to ensure we have a plan for a sustainable High Performance programme. The challenge for 2008 is to staff and implement these plans.

My sincere thanks to all of the coaches, administrators and supporters who have encouraged our best to achieve on the domestic and international stage. It is also worth noting that our most improved players for 2007, Evan Williams and Lisa Cowlard are a junior and a master, demonstrating our ability to encourage and develop at all levels of the game in NZ.



*The All Glass Court in action at the 2007 National Championships in Palmerston North.*

## SPARC

SPARC continue to be Squash's major partner and ally. Their support is multi-faceted and the appointment of Paul Heron as Squash's Relationship Manager has ensured a new dynamic to the partnership. Paul acts as an advocate for Squash within SPARC and facilitates the relationship between the many departments within the organisation.

Our support includes:

- High Performance – Project Delhi
- Participation/ Development Investment
- Professional Development for staff and Board
- NZ Academy of Sport – support services for 15 carded athletes
- PM Scholarship Support for Athletes and Coaches
- Advisory
- Events
- Technology
- Evaluation
- Coaching

There are other areas of support to explore or reignite and Paul and I will be working hard to ensure that we work together in pursuit of our shared goals of making kiwis more active more often, and winning in events that matter to NZers.

## EVENTS

Squash NZ was pleased to be able to support events in a number of ways over 2007. Events are an integral in making our sport visible and attractive. Events contribute to not only giving our elite the opportunity to compete at home at an appropriate level, but also giving the public and the squash community the chance to see them.

### In 2007 we:

- Cost share with Maori Television's live television coverage of the National Champs. Three hours of coverage, two hours live. This unprecedented broadcast was a huge fillip for the sport and put us in an exclusive family of sports able to enjoy live TV in 2007.
- Underwrote glass court erection at National Championships to showcase the TV and sport product.
- Provided prize money (or part thereof) to one PSA and two WISPA professional squash events to give the national squad and junior girls team elite competition at home.
- Facilitated the PSA Closed Satellite series to give local men the opportunity to earn PSA ranking points in NZ.
- Supported the World Masters Championships in Christchurch 2008 via a grant.

Thanks to Warren Patterson, the SNZ Events Committee of Aileen Buscke and Vivienne Brumby, Grant Smith (SquashGym), Martin Thomas (North Shore), Mike Jack (KP) and their committees for your help in the events mentioned above.

I would also like to acknowledge the event committees around the country who have done their very best in delivering a quality experience from the Junior Nationals in Napier, The Secondary School Champs in Nelson, to the Graded Champs and Regional Championships around the country.

**2008**

Next year we have a number of planned activities on which I will act and report next year.

- Improved communication and fostering of productive partnerships with Districts and helping them to support clubs appropriately.
- Increase commercial activity and revenue to the benefit of the entire squash community.
- Increased support to Districts, Referees and Coaches via our Game Development Officer, Jan Loney, who started this week with SNZ – welcome Jan.
- Appoint a permanent High Performance Manager.
- Focus on building District capability.
- Revive the NZ Open.
- Increase the profile of Squash via media, promotion, events and commercial activity.
- Evaluate accurately the current state of the game, review the current SNZ Strategy and developing realistic plans and goals for the coming five years.
- Exploring opportunities in the areas of Marketing, Communication, Technology and Events as part of the strategic review.

- Increase the efficiency of, and develop more user friendly Squash NZ services.
- Provide and communicate tangible value to the entire squash community and public.

To conclude I would like to thank some other very important people.

To Rob Walker, who runs the SNZ owned Club Kelburn, thanks for your contribution not only to SNZ operations but for your vitality within the Wellington region and around the country.

To the Squash NZ Board and Staff, thanks for your tireless efforts in a difficult year.

To the numerous people in the squash community, who I have met over the season, thanks for your honesty, understanding and your welcome.

I write these words knowing that this is just ink on paper, and give you my commitment that I will do my utmost to ensuring that they are converted to action in 2008.

And finally I acknowledge our vital supporters and partners:

SPARC - Paul Heron, Paul Smith, Chris Bullen

NZ Academy of Sport – Martin Dowson

Honda Cars – Grant Blythen

Maori Television – Larry Parr

Dunlop – Dean Sokolich

Southern Trust, Lion Foundation, Perry Foundation, Pub Charity, Caversham Foundation, Eureka Trust, The Trusts, Century Foundation, South Auckland Charitable Trust, ASB Community Trust

My appreciation goes to all who have contributed to the years activities, enjoy the ever shrinking off season. I look forward to working with you all in the year to come.

**MIKE THOMPSON**

**Chief Executive**

*2007 National Women's Champion,  
Shelley Kitchin being  
interviewed by Maori TV.*







## High Performance Programme

Winning medals at the 2010 Commonwealth Games in Delhi is one of the main priorities of the Squash New Zealand High Performance programme.

“Project Delhi” is a joint three year programme between Squash New Zealand and Sport and Recreation NZ (SPARC) arising from a recent review of the high performance area. Project Delhi involves providing individual state of the art sports science support and funding to elite players assessed as being able to succeed at the event.

Present invitees into the programme are: Shelley Kitchen, Louise Crome, Jackie Hawkes, Joelle King, Kashif Shuja, Martin Knight and Campbell Grayson. Other players may be added in the future if they meet the required criteria.

Another priority of the High Performance programme is to re-establish New Zealand’s historical position as one of the world’s leading squash nations. The yardstick is success in major international events, such as world titles (both in singles and teams events), and players achieving top world rankings.

Whilst some may regret the change, winning New Zealand titles and making it into national representative teams is now no longer the ultimate high point in a player’s career. Elite world squash is now unquestionably professional, requiring a commitment by players to full time playing careers.

With many more countries now producing leading players than was previously the case, Squash New Zealand now faces increased challenges to succeed.

It has adopted a longer term view, and its High Performance framework now places particular emphasis on younger players who show the skill and determination to win on the international stage. Planning now includes events as far out as 2014. The framework also recognises the need to develop elite player coaches and mentors.

To provide wise assistance, Squash New Zealand has reconvened its High Performance Advisory Group to assist Squash New Zealand staff and coaches.

The recent review of the High Performance programme has been a positive exercise, ensuring that player development strategies take advantage of the considerable sports science expertise available in NZ, and that our present and future stars are given the best possible starts on the world circuits.

### PSA/WISPA Events

Only two WISPA and one PSA Tournament were held in New Zealand this year. The first WISPA Event, the Central Open at Kawaroa Park, attracted overseas players from Japan, Korea, Hong Kong, and Australia along with 8 New Zealand players. An upset in the final saw Kasey Brown (Aus) defeat Shelley Kitchen 3/0. A week later at the WISPA North Shore Open, which again had an international draw, there was an all New Zealand final where Shelley Kitchen beat Louise Crome 3/0.

The PSA Auckland Open, held at the North Shore Squash Club, included 7 Australians and 1 Hong Kong player in the draw. The tournament was won by the top seed Kashif Shuja who beat Mike Corren (Aus) 3/1.

### Closed Satellite Events

A Squash New Zealand “first” this season was the introduction of a Closed Satellite series of tournaments, run under PSA regulations, which proved invaluable in giving our developing players the opportunity to secure world ranking points without the need to leave New Zealand. Fourteen Clubs/Districts agreed to host these tournaments where entry is restricted to players who must have been resident in New Zealand for three months prior to the event. With world ranking points on offer the host clubs were guaranteed a quality draw which in turn gave their members the opportunity to watch high class squash.

Unfortunately the PSA have changed the criteria for next seasons Closed Satellite tournaments so this will have to be looked at closely before we commit ourselves to registering any events in 2008.

The competitive opportunities gained from holding these events are critical to our High Performance Programme and we want to thank all the clubs who hosted WISPA, PSA and Closed Satellite Tournaments in 2007.

### Professional Players

New Zealand professional players continue to have a significant presence on the international circuit. In November 2006 Squash New Zealand established a base in Halifax, England, where our top men, Kashif Shuja, Martin Knight, Campbell Grayson and Josh Greenfield stayed and were coached by the English professional coach Paul Hornsby. The benefit of having these players based in the UK with easy access to European tournaments was

reflected in the rise in World Rankings with all players attaining their highest career rankings. Kashif Shuja, at no 41, became our highest ranked male player for a number of years. Unfortunately, due to an ongoing injury problem, Callum O'Brien was forced to announce his retirement from all squash.

Shelley Kitchen won three WISPA Tour Events, the Casino Open in Calgary, the Australian Open and the Berkshire Open in the USA. At the 2007 World Women's Open Shelley achieved one of the biggest wins of her career when she beat the current World Champion and World No1 Nicol David in the second round of the tournament. A highly successful season saw her finish with a career best world ranking of 9 as at Nov 1st

Jackie Hawkes and Louise Crome continue to make steady progress on the international circuit. Jackie reached the final of two WISPA tournaments and this combined with other good results saw her rise to no 19, breaking into the top 20 for the first time. Louise, who is based at Liz Irving's Squash Academy in Amsterdam won her first WISPA tournament – the Finnish Open and now has her highest ranking of 25.

Kylie Lindsey experiencing her first year on the international circuit had her ranking rise from 197 to 81. The 2008 season will see Joelle King joining these players on the WISPA circuit and along with Larissa Stephenson and Catherine McLeod, who are both based in the USA, New Zealand is well represented on the world squash stage.

### **Prime Ministers High Performance Scholarships**

Prime Ministers Scholarships for Athletes, Coaches and Support Staff/Officials is a government initiative managed by SPARC and administered by the New Zealand Academy of Sport. The Athlete Scholarships allow emerging and talented athletes to pursue their tertiary education while still training and competing at an international level. Five of our elite athletes and four high performance coaches received scholarships in 2007.

The coaching scholarships gave our coaches the opportunity to travel to Malaysia to spend time studying their highly successful High Performance programme and to attend the World Squash Federation Coaching Conference in Canada. Early in 2008 two coaches will travel to Amsterdam to study elite coaching and observe training camps at Liz Irving's Centre of Excellence. These scholarships make a significant contribution to the Squash New Zealand High Performance programme by further developing the skills of our high performance coaches. SPARC's support of our high performance coaching programme has been greatly appreciated.

### **National Squad**

This year the National Squad met each Monday and Thursday morning for training camps. Robbie Wyatt

conducted the Monday sessions and Lindsey Walters Thursday sessions. During school holidays the top players from the Elite Development Squad were also welcome to join in and this was taken advantage of by the players. Also in attendance at these sessions was Greg Owen who carried out the strength and conditioning for the players.

### **New Zealand Academy of Sport**

11 players were "carded" enabling them to access, in some form sport science, sport medicine, and ACE (Athlete Career Education) support through the New Zealand Academy of Sport.

### **Providers**

Squash New Zealand's high performance programme is fortunate to have the services of the following sport science and ACE providers:

Dr Graham Paterson (medical director), Greg Owen (strength and conditioner), Christine King (dietitian), Ralph Maddison (sports psychologist) and Gaye Bryham (ACE coordinator).

Thank you to all the providers for their expertise, their professionalism, and in particular time. Also thanks to Martin Dowson (Academy of Sport North) for his support of the squash programme.

### **Coaches**

In addition to the carded players, squash also has four carded coaches. These coaches can access coach support service through the Academy of Sport coach support network.

### **SPARC**

As a significant investor in the Squash high performance programme, SPARC are critical in enabling us to make things happen. But SPARC also provide support through programmes, information sharing (e.g. facilitating sport to sport communication), and document sharing (e.g. templates).

In addition, SPARC's high performance director for squash provides valuable support for the high performance team, while at the same time challenging our assumptions and thinking processes to help ensure our actions adhere to best practice. The external input is invaluable as we strive for continuous improvement.

### **Junior Development**

Camps for both the National Development Squad and the World Junior Elite Squad were held at the National Squash Centre on a regular basis between January & July. With no Trans Tasman series this year extra camps, run by Julie Hawkes and Lindsey Walters, for the 7 girls in the World Junior Girls Squad were held as part of their preparation for the World Junior Girls Championships in Hong Kong.



*NZ's Junior Nationals Champions, Evan Williams (Wellington) and Amanda Cranston (Central).*

This year saw a number of our juniors, particularly those trying to gain selection in the New Zealand Junior Girls Team, head overseas for international competition.

In December/January our top four junior girls, with coach Lindsey Walters, went to the UK to play in both the Scottish and British Junior Opens. This was a most successful trip with Joelle King being placed 2nd in the Scottish and 3rd in the British Junior Opens. Kerry Wickett, Amanda Cranston and Lana Harrison also acquitted themselves well against the international competition.

Julie Hawkes took a group of four girls from the World Junior Girls Squad to the Australian Junior Series in Canberra. Once again it was a successful trip with Lana Harrison winning the Girls U/19 in the first event and placed 3rd in the second event of the series. Alana Sincock, Emma Millar and Amanda Landers-Murphy gained valuable experience from playing against the top Australian juniors.

Nine year old Abbie Palmer from Northland travelled to Hong Kong where she played in the Girls U/11 age group at the Hong Kong Junior Open. The tournament attracts well over 400 entries and with 50 players in the U/11 draw Abbie played very well to finish in 4th place.

Alex Grayson, Matiu Te Kani-McQueen, Jamie Skiffington and Lance Beddoes played in the Milo Age Group Tournament in Kuala Lumpur. This is one of the largest junior tournaments held during the season attracting an entry of 600 plus players.

The best performance of this tour was Lance Beddoes who competed in the U15 Age Groups, finishing fourth in a 64-draw.

The New Zealand Junior Open (North Shore), North Island Age Groups (Hamilton), South Island Age Groups (Burnside) and New Zealand Age Groups (Napier) continue to attract large entries from throughout New



*World Junior Women's NZ Team. Lindsey Walters (Asst Coach) Kerry Wickett, Joelle King, Lana Harrison, Amanda Cranston and Julie Hawkes (Coach).*



*World Junior Women's Teams medal ceremony at Hong Kong.*

Zealand and showcase our talented young athletes. Thanks to those clubs and volunteers who give up their time to support these junior events.

Following on from her 3rd placing at the World Junior Women's Championships Joelle King, whose 19th birthday fell on the final day of the NZ Junior Individual event making her ineligible to play, was named Most Improved Junior Female and Evan Williams capped off a highly successful season winning both the Senior Male and Junior Male Most Improved Player.

At the conclusion of the New Zealand Junior Age Groups an Elite Development Squad was named. The aim of this squad is to prepare young New Zealand players to foot it with the world's best, and to support them in launching careers as squash professionals. Competition for next years World Junior Men's Team will be extremely intense with six A2 players and a further three players verging on A grade all vying for the four team positions.

The Junior selectors, Aileen Buscke and Nicky Dunlop are to be thanked for the time and effort they have put in this season selecting teams, seeding national events and presenting ranking lists. Nicky Dunlop is stepping down as a selector to pursue her new "career" as a National Referee. Nicky will be missed for her enthusiasm, insight and knowledge of the junior squash scene.

The High Performances Coaches, Julie Hawkes, Robbie Wyatt, Lindsey Walters, Nick Mita, Tanya Colyer, Carol Owens, Graham Randolph, Mike Allred, Edmund Bradford and Jenny Bell along with district and club coaches have worked tirelessly to contribute to the High Performance Programme. The key to future success is that the coaches continue to work together in the same direction for the benefit of all the players across the country.

### **World Junior Women's Championships Hong Kong, August 2007 - Lyndsey Walters**

In August of this year a team of four players travelled to the World Junior Women's Championships in Hong Kong. The players, Joelle King, Kerry Wicket, Amanda Cranston and Lana Harrison were supported by coaches Julie Hawkes and Lindsey Walters. Carol Owens also attended the individuals to support and coach Joelle.

The girls played in both the individual and teams events. Joelle King had an exceptional individual event losing in the semi final to the Egyptian girl Renee El Weileily who went on to win the title. Joelle showed that she is certainly a very strong player both mentally and physically and to come away from the individual event with a bronze medal was a massive achievement and thoroughly deserved. In the teams event Joelle continued to work hard on court despite suffering from a very tight upper leg and lower back which she had to receive treatment for. Even though Joelle was starting to struggle in some of her team matches she came through to beat Camille Serme, the runner up in the individual event, and also Annie Au, from Hong Kong, to help the team secure the bronze medal.

Kerry Wicket had a good overall tournament with a bye in the first round and a comfortable second round match and then a win over the Dutch number two in the third round. Unfortunately she then lost in the fourth round to Camille Serme, the no 2 seed and eventual runner up in the event. In the teams event Kerry was the only one of the team to play all 7 matches and she recorded wins over India, Switzerland, China, France and USA. In the semi final against Malaysia Kerry played the decider against a very promising Malaysian 14 year old. She was match point down in the 4th game and managed to fight back to 7/8 but was unable to take the match into a deciding 5th game. Kerry was an excellent team player who made an enormous contribution to the team.

Amanda Cranston had very good results in both the individual and teams events. In the individuals she had a very comfortable win in the first round but was then taken to 5 by the Malaysian girl Low Wee Nee but lost this match. In the classic plate Amanda lost in the first round to the English girl Victoria Bell in four. In the teams event Amanda played in 2 of the pool matches winning both easily. Amanda then played Emily Park of USA in the quarter final match and lost a close match in 5. Amanda readily supported her fellow team members and was a great team player.

Lana Harrison had many outstanding performances in both the individuals and teams events. In the individuals she had a very comfortable win over an American girl in the first round and then in the second round lost to the Indian number 1 in three. In the classic plate she won her

first round with ease and then beat the Hong Kong number 2. Lana then went on to lose the semi final of the classic plate against a very promising USA girl. In the teams events Lana won her first 2 matches against India and Switzerland quite comfortably. In the semi final against Malaysia she had a great result eventually winning 9/6 in the fifth. She then played the deciding match against Hong Kong in the 3rd /4th place play off and came away with a win which secured the team the bronze medal.

Overall this was a great experience for all those involved. We not only had some great results in the individual event, especially with Joelle coming away with a bronze medal but the girls were also able to perform well as a team and under extreme pressure to come away with a bronze medal in the teams event.

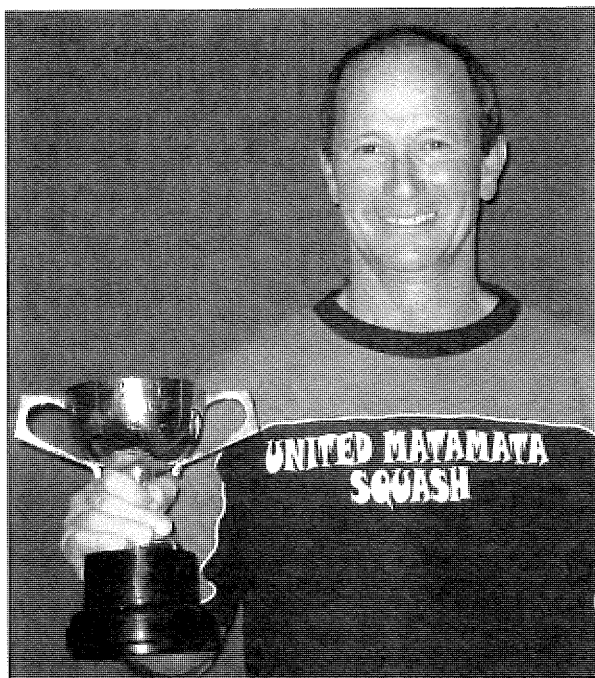
### **Coaching - Prime Minister Scholarships, Malaysian Trip**

At the end of May 2007 three coaches Robbie Wyatt, Nick Mita and Lindsey Walters travelled to Malaysia as part of their Prime Ministers Scholarship. The trip enabled them to observe the Malaysian High Performance programme, to interact with the Malaysian National Coaches to discuss ideas and to network with other National Coaches.

The first meeting held after our arrival was with Cyrus Poncha the current National Squash Coach of India and this proved to be a very rewarding meeting. Cyrus explained that the National Centre of Excellence (based in Chennai) catered for 90% of the countries top senior and junior players and as well as squash coaching also provided both accommodation and schooling for those players that required it. The Indians overseas camp structure was also discussed and the fact that for the Malaysian tournament they bought out their top junior players to Malaysia 2 weeks before the tournament began in order to be able to train with the top Malaysian players. Cyrus also made it clear that the Indian Squash Association was more than willing to co-operate with Squash NZ by providing overseas camps for our players where free accommodation would be provided and our players would be able to play and train with the top Indian players who are certainly becoming a true force to be reckoned with on the international scene.

The next meeting was held with Jamie Hickox the Malaysian National Coach. Once again the structure of the successful Malaysian National programme was discussed at length and like the Indian National programme the Malaysians also have one national base with up to 25 players in attendance at any time. These players, both seniors and juniors, all receive free food and accommodation with the junior players also receiving free schooling. The training programme organised by Squash Malaysia typically consists of a seven day rota with the





*New Zealand Junior Coach of the Year - Waikato's Ellis Matthews.*

first two days requiring the players to attend two training sessions each day followed by a single session on the third day. On the 4th and 5th days they again attend two sessions each day with one session on the 6th day and the seventh day of the rota being a rest day. This intensive training programme has certainly been reaping great rewards for Malaysian squash with their plentiful supply of promising players. The other main key area for Squash Malaysia is their preparation for the Junior Worlds by attending tournaments such as the Scottish Open the British Open as well as the Australian and Malaysian series in order for their players to gain exposure. It was also noted that other countries such as Australia, Korea, Hong Kong and South Africa were also now targeting these tournaments as part of their own preparation for the Junior Worlds.

Whilst in Malaysia the coaches also attended the Milo Series Tournament which was certainly an eye opener for various reasons. The entry was in excess of 400 players and conducted in temperatures regularly exceeding 30 degrees with humidity of 80%. Many courts also only had a single ceiling fan and no air conditioning, there was also a lack of food and facilities at the clubs being used and with the very large entry it was not unusual for matches to run 2 1/2 hours late. This is something our coaches and players will have to contend with in the future.

Overall this was a very worthwhile trip, we not only had the opportunity to meet up with other National Coaches to gain an understanding of their coaching practices but also

gained knowledge of other High Performance programmes and how we can implement them into our programme.

### **World Squash Federation Coaching Conference Calgary, Canada 6th – 9th September 2007**

Through the PM Scholarship scheme Squash NZ was also able to send Lindsey Walters and Robbie Wyatt, to the World Coaching Conference held in Calgary, Canada.

Some of the sessions attended were 'Creative Drills' by Arturo Manzur an American National coach who showed new drills that could be used in order to incorporate 3-4 players being on court effectively at one time. A session by Dr Leonard Lye regarding a new electronic coaching tool he has recently developed which is called the 'Footworker S' which has the main purpose of being able to improve a player's movement around court in a controlled environment which will also assist with the player's level of fitness. A session on 'Deception' by Gene Turk, the senior Canadian Mens Team Coach, provided useful information on how to teach the art of deception to players of all levels in the most basic of ways. Michael Johnson the former coach of top players such as Sarah Fitzgerald and Anthony Ricketts delivered a session on 'Pressure Drills' for elite players with a greater emphasis being placed on high intensity drills which mimic real match situations.

As well as these sessions there were also sessions on the following:

- High Performance Management Systems
- Physical Training for Squash
- Ball Machine
- Tactics for advanced players
- Video analysis "Dartfish"
- Long Term Athlete Development
- Periodization
- International Trends in Squash
- Women in Squash

As well as the formal teaching sessions arranged at the conference it also gave our two coaches the opportunity to mix with other top national coaches in both interactive workshop situations as well as on court practical sessions.

Overall this was a very beneficial conference for our coaches as it enabled them to listen to and learn the latest developments in high performance coaching. They have been able to bring these practices back to New Zealand and are beginning to introduce them into our own High Performance programme.

### Coach Development Officer

Lindsey Walters took up the position as Coach Development Officer in July 2007 and was contracted on average for up to 2 days a week. As the role of Coach Development Officer had been vacant since March the initial priority was to read up on the coach development activities already undertaken last year.

Lindsey has so far covered the following:

- Provided regular communication with the districts, both the Development Officers and Coaches and if needed provided them with the necessary technical support and coaching resources.
- Ensured the Level 1 and Level 2 Coaching databases are up to date. There are many Level 1 coaches who still need to complete their final assessment and this is in need of a follow up.
- Carried out Level 1 final assessments for Auckland and liaising with a number of other districts to carry out their final assessments.
- Currently organising a Level 2 Coaching course to take place in December 2007, liaising with districts to obtain names and numbers of potential coaches for this course.
- Currently putting together an in depth report on all activities carried out last year.
- Currently putting a draft plan together and

recommendations for next year, including visits to districts, implementing a coaching resource library, reviewing the Level 1 coaching course and reintroducing the National Coaching Conferences.

Next year the main focus will be on increasing the number of qualified Level 1 and Level 2 coaches throughout the country. It is anticipated that each district will be able to hold at least one Level 1 course and for the successful coaches to also complete the assessment part of the course within the next twelve months. In doing so I would anticipate that we should be aiming to increase the number of qualified level 1 coaches by 100 by the end of next year.

It is important that a Level 2 coaching course is held next year as it is vital for the progression and success of squash in New Zealand in the coming years.

The reintroduction of district visits would include an opportunity to up skill the coaches in districts as well as conducting coaching clinics. In addition the reintroduction of a National Coaching conference is on the agenda in order to up skill and pass on new coaching practices to the coaches who would in turn then be able to take back these new ideas back to their own districts and clubs.

Lyndsey is also looking to review and update the Level 1 coaching course in order to make it more relevant to current coaching practices. It is anticipated that this review will be completed at a meeting with the National Level 1 tutors.



*Wainuiomata C Grade Men - Winners National SuperChamps*

*Back Row: Lane Irwin (sponsor) Neil McDonald (assistant manager), Zane Ririnui, John Tinetti, Hemi Rangī, Scott Leevey.  
Front Row: Ray Leevey, Hamiora Rangī, Bryan Knox (coach), Deon Stephens, Chris Wright (manager).*

## 2007 Season Results

---

### NEW ZEALAND INTERNATIONAL SERIES

#### CENTRAL OPEN - PSA (Closed Circuit)/WISPA - KAWAROA PARK SC 14 - 17 JUNE

##### Final

Mike Corren (North Shore)	beat	Martin Knight (Thorndon)	3/0
Kasey Brown (Australia)	beat	Shelley Kitchen (Browns Bay)	3/0

---

#### NORTH SHORE OPEN - WISPA - NORTH SHORE SC 22 - 24 JUNE

##### Final

Shelley Kitchen (Browns Bay)	beat	Louise Crome (Remuera)	3/0
------------------------------	------	------------------------	-----

---

#### AUCKLAND OPEN - PSA - NORTH SHORE SC 16 - 19 AUGUST

##### Final

Kashif Shuja (Royal Oak)	beat	Mike Corren (North Shore)	3/1
--------------------------	------	---------------------------	-----

---

#### SOUTH ISLAND CHAMPS/ OTAGO DISTRICT OPEN - OTAGO SRC 4 - 6 MAY

##### Final

Mike Corren (North Shore)	beat	Martin Knight (Thorndon)	3/0
Alana Sincock (Roxburgh)	beat	Tracey Flux (Te Papapa)	3/1

---

#### NORTH ISLAND CHAMPS/WAIKATO OPEN - HAMILTON SC 19 - 21 MAY

##### Final

Mike Corren (North Shore)	beat	Josh Greenfield (Palmerston North)	3/1
Sally Hawkes (Remuera)	beat	Kerry Wickett (Papakura)	3/0

---

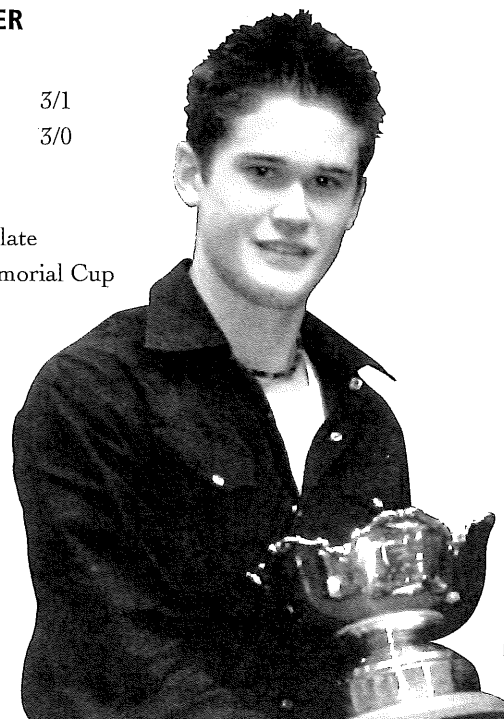
#### NATIONAL CHAMPIONSHIPS - PALMERSTON NORTH 7 - 9 SEPTEMBER

##### Final

Kashif Shuja (Royal Oak)	beat	Campbell Grayson (Titirangi)	3/1
Shelley Kitchen (Browns Bay)	beat	Louise Crome (Remuera)	3/0

<b>Most Improved Male</b>	Evan Williams - Wellington	Vogel Rosebowl
<b>Most Improved Female</b>	Lisa Cowlard - Auckland	Aust. Womens Plate
<b>Services to Refereeing</b>	Jan McAra - Invercargill	Derek Cook Memorial Cup
<b>Coach of the Year</b>	Julie Hawkes - Auckland	
<b>Junior Coach of the Year</b>	Ellis Matthews - Waikato	

*Most Improved Male, 2007*  
*Winner of Vogel Rosebowl*  
*- Wellington's Evan Williams.*



---

**SENIOR INTER-DISTRICT TEAMS EVENT - PALMERSTON NORTH 10 - 11 SEPTEMBER**
**Men**

1. Wellington
2. Auckland
3. Central
4. Canterbury
5. Waikato
6. Southern
7. Bay of Plenty
8. Northland
9. Eastern

**Women**

1. Auckland
2. Central
3. Waikato
4. Bay of Plenty
5. Canterbury
6. Wellington
7. Southern

---

**NEW ZEALAND JUNIOR OPEN - NORTH SHORE SC 30 MAR - 1 APRIL**
**Final**

Josh Thom (Panmure)	beat	Evan Williams (Tawa)	3/2
Joelle King (Hamilton)	beat	Lana Harrison (Papakura)	3/0

---

**SOUTH ISLAND JUNIOR AGE GROUPS - BURNSIDE, CHRISTCHURCH 30 JUNE - 2 JULY**
**Under 19 Final**

Michael Lewis (USA)	beat	Matt Fahey (Christchurch)
Alana Sincock (Roxburgh)	beat	Emma Sim (Christchurch Football)

**Under 17 Final**

Edward Dromgool (Burnside)	beat	Paul Coll (Greymouth)
Emma Millar (Kapiti)	beat	Georgina Shelton-Agar (Remuera)

**Under 15 Final**

Michael Sunderland (Makarewa)	beat	Jarrod Beaumont (Burnside)
Ella Dromgool (Burnside)	beat	Megan Craig (Christchurch)

**Under 13 Final**

Zac Millar (Kapiti)	beat	Jonathan Barnett (Mitchell Park)
Rebecca Barnett (Mitchell Park)	beat	Joely Bennett (Christchurch Football)

**Under 11 Final**

Scott Galloway (Mitchell Park)	beat	Todd Bennett (Christchurch Football)
Abbie Palmer (Warkworth)	beat	Paris Dalrymple-Mortleman (Kapiti)

---

**NORTH ISLAND JUNIOR AGE GROUPS - HAMILTON SC 6 - 8 JULY**
**Under 19 Final**

Josh Thom (Panmure)	beat	Evan Williams (Tawa)	3/2
Lana Harrison (Papakura)	beat	Aliesha Watene (Tokoroa)	Round Robin

**Under 17 Final**

Edward Dromgool (Burnside)	beat	Bryce Redman (Hawkes Bay)	3/2
Emma Millar (Kapiti)	beat	Kendyl Morris (Te Awamutu)	3/0

**Under 15 Final**

Lance Beddoes (Henderson)	beat	Liam O'Shaughnessy (Hawkes Bay)	3/2
Ella Dromgool (Burnside)	beat	Megan Craig (Christchurch)	3/0

**Under 13 Final**

Jonathan Barnett (Mitchell Park)	beat	Scott Darroch (Tokoroa)	3/0
Rebecca Barnett (Mitchell Park)	beat	Joely Bennett (Christchurch Football)	3/0

**Under 11 Final**

Scott Galloway (Mitchell Park)	beat	Nathan Brocks (Squash City)	3/0
Abbie Palmer (Warkworth)	beat	Paris Dalrymple-Mortleman (Kapiti)	Round Robin



**NZ NATIONAL AGE GROUPS - HAWKES BAY 27 - 30 SEPTEMBER**

**Under 19 Final**

Evan Williams (Tawa)	beat	Cameron Jamieson (Titirangi)	3/0
Amanda Cranston (Ohakune)	beat	Kerry Wickett (Papakura)	3/1

**Under 17 Final**

Lui Syder (Eden Epsom)	beat	Bryce Redman (Hawkes Bay)	3/0
Lana Harrison (Papakura)	beat	Emma Millar (Kapiti)	3/0

**Under 15 Final**

Lance Beddoes (Henderson)	beat	Michael Sunderland (Makarewa)	3/2
Megan Craig (Christchurch)	beat	Danielle Fourie (Palmerston North)	3/1

**Under 13 Final**

Zac Millar (Kapiti)	beat	Scott Darroch (Putaruru)	3/0
Joely Bennett (Christchurch Football)	beat	Abbie Palmer (Warkworth)	3/0

**Under 11 Final**

Scott Galloway (Mitchell Park)	beat	Nathan Brocks (Squash City)	3/2
Camden Te Kani-McQueen (Geyser City)	beat	Kasey Calvert (Cambridge)	Round Robin

**Most Improved Junior Male**

Evan Williams (Tawa) Junior Management Trophy

**Most Improved Junior Female**

Joelle King (North Shore) Junior Management Trophy

**Best District Overall**

Auckland Gifford Trophy

**JUNIOR INTER-DISTRICT TEAMS EVENT - HAWKES BAY 1 - 3 OCTOBER**

**Boys**

1. Auckland
2. Wellington
3. Eastern
4. Bay of Plenty
5. Central
6. Northland
7. Canterbury
8. Southern
9. Waikato
10. Midlands

**Girls**

1. Auckland
2. Bay of Plenty
3. Canterbury
4. Wellington
5. Southern
6. Waikato
7. Central

**NZ SECONDARY SCHOOLS CHAMPIONSHIPS - NELSON 17 - 19 AUGUST**

**Finals**

Winner - Auckland Grammar Boys	Runner up - Rotorua Boys High School
Winner - St Cuthbert's College Girls	Runner up - Waikato Diocesan Girls

**MITCHELL CUP/COUSINS SHIELD - AUCKLAND 1 - 3 JUNE**

**Venue**

Cousins Shield - North Shore	beat	Remuera
Mitchell Cup - Remuera	beat	North Shore

*Wellington's Martin Knight who led Wellington's Senior Men's Team to victory over Auckland in NZ Teams Event.*



**SUPERCHAMPS TEAMS EVENT FINALS 12 - 15 SEPTEMBER**

	<b>Men</b>		<b>Women</b>
B Grade	Island Bay	Masterton	Whakatane
C Grade	Wainuiomata	Taupo	Herne Bay/Ponsonby
D Grade	Mitchell Park	Remuera	Timaru
E Grade	Henderson	Te Puke	Taumarunui
F Grade	Taupo	Te Puke	Hawera

**MASTERS NATIONAL CHAMPIONSHIPS - NORTH SHORE 19 - 22 OCTOBER**

35 +	Men	Scott Gardiner
	Women	Amanda Hopps (Aus)
40+	Men	Gary Duberly
	Women	Cindy Meintjes (Aus)
45+	Men	Geoff Davenport (Aus)
	Women	Kay Newman
50+	Men	Charlie Mayhew
	Women	Sandra Egan
55+	Men	Wayne Seebeck
	Women	Sue Volzke (Aus)
60+	Men	Brian Cook (Aus)
	Women	Kaye Jackson
65+	Men	Richard Purser
	Women	Patsy Fleming
70+	Men	Maurie Peters

**MASTERS INTER-DISTRICT TEAMS EVENT - NORTH SHORE 23 - 25 OCTOBER**

1. Canterbury
2. Bay of Plenty
3. Auckland
4. Waikato
5. Central Districts

**TRANS TASMAN MASTERS TESTS - AUCKLAND 17 - 10 OCTOBER**

**1<sup>ST</sup> TEST - NORTH SHORE SQUASH CLUB - 17 OCTOBER**

**NZ 6 AUSTRALIA 6 - Australia wins on points 282 - 275**

35+	Scott Gardiner	beat	Paul Bushel	3/0
	Lisa Cowlard	beat	Amanda Hopps	3/0
40+	Gary Duberly	beat	Warren Miller	3/1
	Kathryn Austin	lost to	Cindy Mientjes	0/3
45+	Ed Post	lost to	Geoff Davenport	0/3
	Kay Newman	beat	Christine Cooper	3/1
50+	Charlie Mayhew	lost to	Tom Spark	0/3
	Sandra Egan	beat	Gaye Mitchell	3/1
55+	Trevor Colyer	beat	Brian Cook	3/0
	Judith Smith	lost to	Sue Volzke	0/3
60+	Richard Purser	lost to	Hugh Colburn	2/3
	Kaye Glennly	lost to	Marilyn Kennedy	1/3



**2<sup>ND</sup> TEST – NORTH SHORE SQUASH CLUB - 18 OCTOBER**

**NZ 3 AUSTRALIA 9**

35+	Scott Gardiner	lost to	Paul Bushel	1/3
	Lisa Cowlard	lost to	Amanda Hopps	1/3
40+	Gary Duberly	lost to	Warren Miller	0/3
	Kathryn Austin	lost to	Cindy Mientjes	0/3
45+	Ed Post	lost to	Geoff Davenport	0/3
	Kay Newman	beat	Christine Cooper	3/1
50+	Charlie Mayhew	beat	Tom Spark	3/1
	Sandra Egan	beat	Gaye Mitchell	3/2
55+	Trevor Colyer	lost to	Brian Cook	0/3
	Judith Smith	lost to	Sue Volzke	1/3
60+	Richard Purser	lost to	Hugh Colburn	2/3
	Kaye Glennly	lost to	Marilyn Kennedy	1/3

**3<sup>RD</sup> TEST – NORTH SHORE SQUASH CLUB - 26 OCTOBER**

**NZ 6 AUSTRALIA 6 - Australia wins 25 games to 18 on countback**

35+	Scott Gardiner	beat	Warren Millar	3/2
	Lisa Cowlard	beat	Amanda Hopps	3/2
40+	Gary Duberly	beat	Geoff Davenport	3/1
	Kathryn Austin	lost to	Cindy Meintjes	0/3
45+	Ed Post	lost to	Tom Spark	0/3
	Kay Newman	beat	Christine Cooper	3/0
50+	Charlie Mayhew	beat	Garry Irwin	3/0
	Sandra Egan	beat	Gaye Mitchell	3/2
55+	Trevor Colyer	lost to	Brian Cook	0/3
	Judith Smith	lost to	Sue Volzke	0/3
60+	Richard Purser	lost to	Hugh Cohburn	0/3
	Judy Cooper	lost to	Marilyn Kennedy	0/3

**WORLD JUNIOR WOMEN CHAMPIONSHIPS, HONG KONG 1 – 11 AUGUST**

**INDIVIDUAL RESULTS**

Joelle King	First Round	bye		
	Second Round	beat	Salma Hany (Egypt)	9/3 9/1 9/6
	Third Round	beat	Milnay Louw (South Africa)	9/2 9/2 9/1
	Fourth Round	beat	Laura Gemmell (Canada)	9/3 9/2 9/6
	Quarter Final	beat	Heba El Torky (Egypt)	6/9 8/10 9/2 9/5 9/1
	Semi Final	lost to	Raneem El Weleily (Egypt)	4/9 7/9 2/9
Lana Harrison	First Round	beat	Hannah Conant (USA)	9/0 9/1 9/3
	Second Round	lost to	Dipika Pallikal (India)	4/9 5/9 9/10
Classic Plate	First Round	bye		
	Second Round	beat	Dipika Pallikal (India)	9/4 9/3 10/8
	Third Round	beat	Siu Ka Man (Hong Kong)	9/2 7/9 9/1 9/1
	Quarter Final	beat	Leung Shin Nga (Hong Kong)	9/4 9/5 9/6
	Semi Final	lost to	Olivia Blatchford (USA)	3/9 8/10 5/9

Amanda Cranston	First Round	beat	Agapi Kazamia (Switzerland)	9/0 9/0 9/0
	Second Round	lost to	Low Wee Nee (Singapore)	5/9 10/9 9/5 6/9 3/9
Classic Plate	First Round	bye		
	Second Round	lost to	Victoria Bell (England)	7/9 9/1 4/9 2/9
Kerry Wickett	First Round	bye		
	Second Round	beat	Cheri-Ann Parris (Barbados)	9/1 9/0 9/6
	Third Round	beat	Melissa Meulenbel (Netherlands)	9/4 9/5 9/0
	Fourth Round	lost to	Camille Serme (France)	1/9 1/9 6/9

## TEAM RESULTS

### POOL PLAY

#### New Zealand 3 - Switzerland 0

Lana Harrison	beat	Agapi Kazamia	9/2 9/7 9/0
Kerry Wickett	beat	Jasmin Ballman	9/2 9/6 9/0
Amanda Cranston	beat	Caroline Bachem	9/0 9/1 9/1

#### New Zealand 3 - India 0

Kerry Wickett	beat	Anwasha Reddy	10/8 9/4 3/9 9/3
Joelle King	beat	Dipika Pallikal	9/6 10/8 9/0
Lana Harrison	beat	Surbhi Mishra	9/3 9/5 9/4

#### New Zealand 3 - China 0

Lana Harrison	beat	Ding Yating	9/1 9/0 9/0
Kerry Wickett	beat	Xiu Chen	9/0 9/0 9/0
Amanda Cranston	beat	Qian Jiayi	9/0 9/0 9/0

#### New Zealand 3 - France 0

Joelle King	beat	Camille Serme	9/3 9/6 9/3
Amanda Cranston	beat	Gabrielle De Lavison	9/2 9/1 9/0
Kerry Wickett	beat	Faustine Gilles	9/5 9/5 9/6

### QUARTER FINAL

#### New Zealand 2 - USA 1

Amanda Cranston	lost to	Emily Park	9/1 9/4 5/9 4/9 4/9
Joelle King	beat	Logan Greer	9/0 9/0 9/1
Kerry Wickett	beat	Olivia Blatchford	10/8 9/4 9/3

### SEMI FINAL

#### New Zealand 1 - Malaysia 2

Lana Harrison	beat	Pushppa Devi	9/5 7/9 9/6 7/9 9/6
Joelle King	lost to	Low Wee Wem	7/9 3/9 9/7 5/9
Kerry Wickett	lost to	Low Wee Nee	7/9 9/3 0/9 6/9

#### 3<sup>RD</sup> - 4<sup>TH</sup> PLAYOFF NEW ZEALAND FINISHED 3<sup>RD</sup>

#### New Zealand 2 - Hong Kong 1

Kerry Wickett	lost to	Leung Shin Nga	3/9 2/9 7/9
Joelle King	beat	Annie Au	9/1 9/6 9/4
Lana Harrison	beat	Liu Tsz Ling	5/9 9/0 10/8 9/7





## World Squash Federation Report

In October 2009 in Copenhagen, the IOC will announce the host city for the 2016 Olympics. Importantly for squash it will also determine the programme for those Olympics. This is the next opportunity for squash to press for inclusion in the Olympic programme.

In 2005 after announcing London as the host city, the IOC voted to remove two sports (baseball and softball) from the Olympic programme for those Olympics. The programme review undertaken at that time had involved five non-Olympic programme sports. Squash was voted the number one sport for inclusion on the Olympic programme of those five sports. In the final vote however Squash did not receive the required 2/3rd support for inclusion on the Olympic programme despite there being available places for two additional sports. As a result in London 2012 there will be only 26 of a maximum number of 28 sports on the programme.

Importantly the voting process has now been changed so that a simple majority only is required for inclusion in the Olympic programme.

Work is well underway to press for the inclusion of squash in the 2016 Olympics. The IOC has sent out a survey requesting a wide range of information on our sport. This has been completed with the assistance of our member nations and submitted to the IOC. This information is now being analysed and in October 2007 a recommendation was due to be presented to the IOC Executive Board by the Olympic Programme Commission.

In April 2008 a shortlist of sports to be considered for inclusion in the 2016 Olympics will be announced.

Squash has been announced as a core sport in the Commonwealth Games. Squash in Melbourne 2006 was very successful but it was obvious that the rules of doubles needed to be amended to improve the appeal of this developing game. New Zealand was asked to lead this project and Dave Clark led a trial which concluded that a wider court (by 0.8 metres) and certain rule changes were required.

Dave Clark's report was very well received internationally. The Australians successfully trialled its conclusions at their National Doubles Championships and proposed further rule changes. The South Africans also conducted a trial and various individuals made constructive suggestions.

The 2008 World Doubles Championships are being held in Delhi. This will be the first opportunity to test the new rules in international competition.

Another important strategy for World Squash is to raise the profile of squash. It is doing this by seeking to raise the profile of and re-launch its World Championships. This work has involved collecting survey information with the

ultimate goal of re-branding the World Championships and improving the production and distribution for television.

This year the Women's World Open is being held in Madrid (a candidate city for the 2016 Olympics) and the Men's World Open in Bermuda. The World Junior Women's were held in Hong Kong and New Zealand finished an outstanding third place. The Men's World Teams Championships are being held in India. In 2008 the Men's World Open and Women's World Open will be held in Manchester, England.

The 2006 World Junior Men's Championships were held in Palmerston North. The report of the World Squash Federation Championships Committee speaks in glowing terms of the organisation and conduct of this event by Grant Smith and the Palmerston North squash community. The winner of that event was Ramy Ashour who has since gone from strength to strength and is currently ranked as the World No. 2.

During the year a World Coaching Conference was held in Calgary, Canada. Robbie Wyatt and Lindsay Walters attended from New Zealand. A Chief Executive's Conference was held in England. Mike Thompson attended. It is important that New Zealand is represented at these world events to ensure our practices remain at the forefront of world practice but also to establish networks with other leading countries, their administrators and coaches.

World Squash is updating its website and it is expected to go live in late 2007. An important feature of the new website will be a resources page. Member nations will be able to post resources that they are prepared to make available to developing countries. This should be an important tool for countries as they develop strategic plans, policies or seek coaching resources. The sharing of resources can only advance our sport internationally.

The World Squash Federation is in one sense a small organisation. It has a Chief Executive (Christian Leighton), an Administration Manager (Tracy Langton-Jones) and an Administrative Assistant (Rebekah Viles). The Management Committee is led by President Jahangir Khan and three Vice Presidents (Frank Van Loon, Heather Dayton and Gerard De Courcy).

In another sense the World Squash Federation is a much bigger organisation. It has 141 member nations making it a truly global sport. The reach of the sport into so many countries clearly identifies squash as one of the great international sports.

**GERARD DE COURCY**  
**WSF Vice President**

## Grading & Statistics Report

The Grading System is the major part of the National Club Member Register. At the end of September 2007 there were 15,856 graded players (2006 - 16,658). In addition, the national club member register had a further 7,048 active leisure/casual club members (2006 - 6,834) giving a combined total of 22,961 "registered" club members (2006 - 23,492).

The total number of players is believed to be below real club membership numbers as indications are that many clubs continue to not provide Squash NZ with complete details of either/or: their 'young' junior members and their "leisure" members.

The maintenance of full and complete membership register of all people who use "club facilities" on a regular, even if casual basis, is of considerable benefit to the sport, at all levels. It cannot be stressed strongly enough that all clubs must ensure that all of their "members", regardless of membership category (or the manner in which the users of club courts access the facilities), are registered with

The "J" grades were introduced at the beginning of the 2003 season to provide a competitive structure for the young / beginner juniors. From district to district there seems to be a wide variation in the success of the 'J' grade concept, but in a number of districts it is working well. At the end of 2007, there were 1980 "J" grade players, (2006 - 2073; 2005 - 1659; 2004 - 1473; 2003 - 1059). At the end of the 2007 season, "J" grade players, comprised 12.5% of the total grading list and 55% of total graded junior players - the same as for 2006.

During the 2007 season, the operational policies of the previous season were maintained, the prime intention of which is to maintain a reasonably even spread of players across the B to F grades. Graded player numbers across all grades continue to show that generally the policy under which the grading system is been operated continues to have the desired positive effect on the number of player entries in graded tournaments.

It is disappointing to see a fall in the number of teams

### Players by Grades (Men & Women combined).

Oct 07	%	Oct 06	Oct 05	Oct 04	Oct 03	Oct 02	Oct 01	Oct 00	Nov 99	Nov 98	Nov 97
A1	28 0.2%	33	25	31	28	26	28	26	26	26	29
A2	173 1.1%	169	165	159	175	171	179	171	172	191	163
B	2550 16.1%	2618	2556	2411	2453	2460	2413	2339	2379	2358	2276
C	3126 19.7%	3380	3340	3063	3261	3384	3423	3410	3498	3560	3719
D	2566 16.2%	2665	2674	2739	3035	3205	3466	3515	3755	4055	4396
E	3793 23.9%	4038	4075	4174	4269	4531	4776	4628	5117	5502	5863
F	1640 10.3%	1782	1718	2017	2279	2776	2990	2817	2535	2896	3054
"J's"	1980 12.5%	2073	1659	1473	1095						
	15,856	16,658	16,212	16,067	16,595	16,553	17,275	16,906	17,482	18,588	19,500

the club, their district and Squash New Zealand. As with almost all sports, the number of people participating in the sport of squash has a direct bearing on the ability of the sport to attract outside support and revenue by way of grants and sponsorships, be it at club, district or national level. The various sources from which grant and sponsorships funds are available invariably want to know how many participants their funds are benefiting.

entering the Super Champs Event at district level in 2007 - 266 teams, against 290 teams in 2006. In 1997 there were 432 teams entered at a district level and while graded player numbers have fall by just under 20% in the last 10 years, the fall in the number of teams entering Super Champs over the same period is around 40%.

Again the question must be asked - are clubs and districts are promoting the event for what it really is - an inter-club



*Mitchell Park D Grade Men - Winners National SuperChamps*

*Back Row: Wayne Eltringham, Chris Priest (Coach), Owen Ngarewa, Brady Cole, Josh Speleban. Front Row: Dave Hand, Jonathan Barnett, Paul Barnett (Manager), John de Wever.*

graded teams championship within each district, with the opportunity for the winning team to represent their club and district at a national championship. No other sport provides its "club" players at all levels with the opportunity of attending a national event, with a national title at stake!

Numerically, the senior and masters numbers have fallen over the past five years, particularly the seniors. While junior numbers are down on last year, they are still well above 2003 when the 'J' grade was introduced. Overall, total competitive numbers are down slightly on 5 years ago.

daily basis.

The regular publication of the grading list on the website continues to highlight areas of concern, not the least of which is the "prompt collection of results", which is totally dependant on clubs 'doing their bit' immediately following tournaments. Possible improvements to this area of the grading system continue to be evaluated.

The Squash Grading System continues to be the backbone of competitive squash in New Zealand and its successful operation is due to the considerable level of volunteer time

**Age-group Statistics for the past five years provide interesting figures:**

	2007		2006		2005		2004		2003	
Seniors (19 to 34 years)	3,980	25.1%	4308	25.9%	4397	27.2%	4616	29.0%	5,001	30.1%
Masters (35 and over)	8,278	52.2%	8580	51.5%	8437	52.0%	8385	52.0%	8,773	52.8%
Juniors (Under 19)	3,598	22.7%	3770	22.6%	3378	20.8%	3066	19.0%	2,821	17.0%
<b>Totals</b>	<b>15,856</b>		<b>16,658</b>		<b>16,212</b>		<b>16,067</b>		<b>16,595</b>	

Increasing junior numbers are no doubt attributable to both the work of the Squash Development Officers and the ability of clubs to offer new young junior players a competitive structure specifically aimed at the beginner level.

During the 2007 season we continued with the multi-function grading list "search" facility on the Squash NZ website, and continued the twice monthly update/publication frequency on the 1st and 15th of each month. The site attracts a considerable number of "hits" on a

and effort by club and particularly district statisticians. Considerable thanks must be extended to them for their work which benefits individual players and the sport of squash as a whole.

**STEVE SCOTT**

**Director - Gradings & Statistics**

## Refereeing Report

It was another active year for the New Zealand referees with 10 sanctioned events requiring attendance by referees. These included four junior events - the North and South Island Championships, the Junior Open and the New Zealand Junior National Championship. The first two proved to be the biggest events as far as player numbers were concerned and both required eight referees each.

We had a further six senior events, including one PSA and two WISPA events. The tournament calendar was boosted by the 10 closed PSA tournaments – these events were run by districts where the referees attending were contracted by the districts and not under the umbrella of Squash New Zealand.

The database of 21 national referees was boosted this year with two new qualifications – Mike Jack (Central Districts) and Nicky Dunlop (Canterbury). There were 16 national referees active on the national front this year including Mike Jack, whose qualification earlier in the year meant he was called into service immediately.

We had six new district referees qualify – Karl Frazer (Central), Lianna Burnett (Auckland), Janet Udy (Wellington) and Fred Cross, Michael Croucher and Jackie Hamilton (all Otago). Donna Wilson (Central) has passed all her practical credits and has just the exam to complete, so this will bring the number to seven.

The recipient of this year's Derek Cook Memorial trophy was Jan McAra.

On the international front, Peter Highsted attended the World Junior Girls Championship in Hong Kong. Sandra Tinkler and Pauline Boyle also attended the Oceania Games in Samoa. My thanks to you all, your attendance at these events was at your own expense and your willingness to fly the New Zealand refereeing flag is appreciated.

A total of 15 referees attended the New Zealand National Championship in September at Squash Gym in Palmerston North and prospective referee Nicky Dunlop was also in attendance. A two-hour workshop was held prior to the commencement of games on the Friday morning and discussion points included the assessment process, tournament allocation and the ranking list.

The New Zealand refereeing panel this year implemented a ranking list for referees. This was introduced because currently we are unable to provide enough consistent, high-quality matches for our referees to develop and maintain their skills. This means there can be a large variance in the standard of our referees.

With an increase of male international players on our

shores, it was felt a ranking list would be a valuable tool by which to allocate referees. It was also felt that newly qualified referees could view the ranking list as something to measure themselves against and to use as a self improvement process.

Recruitment and retention of referees has been long been identified as a problem in our sport and I might add that we are not the only sport facing this issue.

Factors such as training and development opportunities; rewards and incentives for officiating; recognition and acknowledgement of their contribution; negative behaviour from players, coaches and parents; the perception of refereeing; time pressure (this is certainly a big one as time off work to attend events that start mid-week is required); a perceived lack of support from clubs, districts and national office – referees are often (unintentionally) over looked; opportunities to progress all contribute to the difficulties in recruiting and retaining referees.

These are just some of the issues facing refereeing in squash (and other sports) and while we are not at crisis point it is worth noting we have been marking time for a number of years. By this, I mean we are holding our own with numbers but the real concern is the loss of our elite and most competent referees. These are the ones charged with assessing those who wish to become referees as well as assessing and mentoring the current referees.

Our goals must be to provide quality referees, to increase our numbers and to improve the understanding and appreciation of the role of the referee.

Finally, I would like to announce that I am standing down from the role of Director of Refereeing after four years of service. I wish to express my heartfelt thanks to the panel – Nichol Taylor, Chris Buckland and Phil Morgan, to the 22 national referees who have offered their time unselfishly, to the district convenors for all your hard work and to the team in the national office.

### JAN MCARA

#### Director – Refereeing

#### New Zealand Referees:

Naeomi Beaumont; Paddy Bourke; Pauline Boyle; Chris Buckland; Aileen Buscke; David Conza; Nicky Dunlop; Heather Findlay; Ian Gardiner; Peter Highsted; Mike Jack; Nigel Lloyd; Jan McAra; Ross Minehan; Phil Morgan; Kay Newman; Dru Reid; Wayne Smith; Paul Sneyd; Ian Taiaroa; Nichol Taylor; Sandra Taylor; Brett Watene.



## Lion Foundation 2007 NZ Squash Club of the Year Wellsford Squash Club

For 2007 the recipient of the Lion Foundation Club of the Year is the Wellsford Squash Club.

This year Squash New Zealand received a total of eight well presented applications for this prestigious title, with a good mixture of city and rural clubs. For the record, this award was first made in 1988 to the Te Aroha Club and the concept was revitalized in 1997, when in conjunction with the Lion Foundation, the Reporoa Club was the recipient.

They received the initial \$2,000.00 Lion Foundation Grant.

The Wellsford Club this year stood out for a number of reasons, being a two-court rural club linked in with a Golf Club and with a strong junior participation level. Over 70 juniors play at the club, with a group of approximately 30 primary juniors playing on Monday after school and the balance being college juniors playing on Tuesday.

Coaching is arranged for these juniors as well as social events to introduce prospective juniors and family members to the Club. It is significant that the Northland President, Phillip Barbour, a Club member, actively coaches these promising juniors.

Because of the pressure on the two courts, a sub-committee was formed at the Golf and Squash Clubs 2006 AGM to evaluate the possibility of adding a further two courts.

In February 2007, the Club held a successful Business House Tournament in which 20 teams of four members

took part after two nights. One team member was a non-club member to give them an introduction into the squash scene. In addition, fun one-day tournaments were held based on a particular dress code.

A strong message came through from the Committee's application that there are good strategic relationships with several local businesses. Most of these sponsors are Club members/players, to the mutual benefit of the Wellsford Business Community and the Club.

The current Committee operates efficiently and concentrates on communicating with club members by means of an annual club booklet, regular newsletters and weekly emails advising draws and current notices.

Wellsford Club arranges regular challenges with other squash clubs in the area, covering Red Beach, Warkworth and Maungaturoto. The clubs current membership is 151 and as noted previously, this includes 70 juniors.

In addition to the major building project being planned, the enthusiastic Committee is currently raising funds to redecorate the club interior, provide new drapes and update the kitchen facilities. All in all, the club is working hard and achieving success in bringing fun and fitness to all age groups in the Wellsford area.

Squash New Zealand acknowledges the support of the Lion Foundation and congratulates the Wellsford Club on winning this prestigious award for 2007.



*Picturesque Wellsford Golf and Squash Club.*



## Club Kelburn



### Another Great Year.

It is always a great time to pause and reflect when I sit down to write for the Annual Report on the year that was at Club Kelburn. This is the fourteenth year that I have done the report, and have been running the club, which is a sign of longevity if nothing else!

We have had another great year in many ways at Club Kelburn. From a financial perspective we have once again returned a profit of over \$100,000, which is something I try and accomplish every year. As a percentage of our turnover, \$100,000 is an excellent result, and for the last few years we have achieved more than this, including the year I am reporting on. At the same time we have continued to upkeep the facility and gym equipment

In the last year the court fees and gym revenue have increased a small percentage, which are our two main revenue streams. The shop trading was down a bit, but is still a very important part of our revenue. Over the last few years these three main areas have been up and down depending on the year, but overall the profit has remained at around the same excellent levels. It is a great thing to have three strong revenue streams in different areas, to allow for different trading situations.

### Squash

In the last year I have tried to continue to tweak our squash programmes and products to keep them fresh. We have just fine tuned things a bit, and tried to make things more fun and personal for the players. Our leagues, business house and Sunday Club are all going well, as are coaching programmes. We run our leagues and business house on the internet on our website, and update them daily. A lot of the players love looking up who is winning etc on the website, and the site is a real plus.

### Gym

We have continued to maintain and upgrade the gym gear, and we do offer extremely good value for money in the Wellington marketplace. The gym business is getting tougher, and more and more gyms have opened up, so it is hard to get strong growth in this area. We have a good niche, and continue to market to our strengths.

### Shop

There is a bit more competition in the Wellington marketplace in this area now, and this has cost us some sales, but we would still be the biggest seller of squash rackets out of any one store in New Zealand, and will continue to aggressively market nationwide through the website, posters and our database.

### To The Future

We will continue to look for innovations in our key business areas, and will generally tweak things rather than make wholesale changes. Why change a winning formula? I have looked at the financials of a number of small businesses this year, and compared to the vast majority we continue to return outstanding results.

The main thing I am trying to focus on is, as our club goal states, "to be the best part of our customers day". People want to feel important and welcome when they come to a club, and it is that sense of community they get at a club that is the most important thing.

Thanks once again to those people who have helped us have an excellent year, including all my staff, wholesalers, tradesmen, business friends and mentors. To me, Club Kelburn is a special place, and I feel lucky every day to be able to make a living out of something I really enjoy, and have a passion about.

**"HONEST" ROB WALKER**

**Manager Club Kelburn**



## National Squash Centre

2007 has been a difficult year for the National Squash Centre Trust. The operator of the Café business expressed unhappiness with their performance in the Café business and after some discussion without further notice abandoned the Café and its lease of the premises. The operator has subsequently lodged a legal claim against the Trust based on alleged misrepresentations which the Trust absolutely denies and is defending vigorously. The Trust has also lodged a counterclaim.

Following the operator's abandonment of the premises we have actively sought a replacement lessee/operator and have been successful in completing a contract with Subway. The new business is to operate from early 2008 and the lease is for a term of four years with the right of renewal. The trust is very pleased to have secured such a

strong tenant and business operator and this should secure our position for the future.

The operation by the Trust of the squash court business has been steadily improving. Usage has increased and although the business was affected detrimentally by the actions of the former Café operator this is being increasingly overcome. The new manager Glen who has been in place since May is working effectively under the guidance of our executive director Neven Barbour. The future for the centre once the litigation issues are resolved looks promising.

**BRUCE DAVIDSON**

Chairman



## Masters Report

This year has been busy for our top masters players, with the Trans Tasman Test Series being played at North Shore on top of their other commitments.

Considerable effort has been made this year to increase the numbers of Masters players in our national events, whatever their playing level. With the help of Steve Scott and Rob Walker of Club Kelburn, a poster was sent out to all clubs advertising the events and giving contact details. I followed this up by sending out emails at various times during the year to about 150 Masters around the country, advising of upcoming events, and providing details. Unfortunately, however, this has not resulted in increased participation. It seems there is no substitute for good leaders and word of mouth. Many players seem reluctant to commit themselves to tournaments, preferring their regular, mid week friendlies.

### National Masters Club Teams Event.

This was held in Wanganui in the last weekend in June. Championship and Social teams were catered for. There were four teams competing in the Championship section. Mount Maunganui, headed by A graders Darryl and Te Pua Russell and Brent Sherman, were clear winners, with Lugton Park runners up. The social division had five teams and Wanganui came out on top

Over the years we have had very strong teams from clubs such as Kawarua Park, Taupo, Hamilton, Geyser City and Hawkes Bay taking part. If they all entered in the same year, this would be such a good competition. Squash Gym, Palmerston North has offered to host this event in 2008.

### NZ Masters Championships

These were held over Labour Weekend at North Shore Squash Club. Martin Thomas and Pat McHugh put in many hours to make this tournament a success. The club has wonderful facilities, and the caterers provided great meals throughout the week.

Although the entries were up a bit on last year's, the numbers, particularly in the lower grades were disappointing. We need to work more on advertising that this is not just an event for elite players.

### Rob Roche Trophy

This trophy for services to Masters Squash was awarded to Rob Roche himself, in recognition of the great contribution

he has made to masters squash in different ways over many years. He was present to receive the trophy, and was very appreciative.

### Individuals

The presence of the Australians boosted the strength of the individuals. They took out 5 of the 11 Championship age groups they competed in. There were some wonderful close matches throughout the tournament. A number of these results were then reversed in the teams events.

Full results – elsewhere in this publication.

### Inter District Teams Event.

It was disappointing that only 5 teams entered this year. Noticeably absent was Wellington, which is hard to understand, considering the size of this District. We hope any problems they have will be addressed in time for next year. We also hope other districts will make a special effort to send teams next year when the World Championships are in Christchurch.

Those teams present had some great, close contests. There is dispensation allowing for two players in each team not to play in the individuals, but as was the case this year, a team can be disadvantaged should injuries occur. We encourage all team members and reserves to play in the individuals.

A round robin of the five teams was played, and second seeded Canterbury beat top seeded BOP 6/4 in the finals, in a very exciting tie. Robbie Wyatt had a great match with Steve Wren, Robbie winning 10/9 in the 5th.

Canterbury had a 6/4 win over Auckland, and BOP beat Auckland 6/4.

Team Placings were –

1. Canterbury
2. Bay of Plenty
3. Auckland
4. Waikato
5. Central Districts

### Australian Test Series.

The Australians had a formidable line up of players from seven different states. NZ had representatives from five



*Winners of New Zealand Masters Inter-District Team Championship - Canterbury*

*Back row: Judy Smith, Karen Walton, Charlie Mayhew, Nicky Dunlop, Pam Gearð, Ed Post, Ann Harliwicz  
Front row: Steven Wren, Wayne Seebeck, Freda Walker, Laurence Skurr  
Absent: Scott Gardiner*

districts. All three tests were played at North Shore, because of the good facilities there, including on site Feta catering, and the close proximity to the accommodation at Spencer on Byron, making transport easy. Two tests were played before the individuals and one after.

Team names, and full results elsewhere in this publication.

**1st Test**

We started well with Scott Gardiner - 35+, having a straight games win. The Aussies took the next 3 matches. Then Gary Duberly - 40+, Sandra Egan - 50+ and Kay Newman - 45+, won their matches in 4. Trevor Colyer - 55+ was very sharp in beating old rival Brian Cook in 3. The Aussies took out the 50+ and 45+men and 55+ women, then Lisa Cowlard -35+had a very good straight games win. We were 6 matches all, 21 games all, but lost by 7 points.

A disappointing result, but a very exciting start to the series.

**2nd Test**

We hoped we would retain all the wins from the first test and perhaps pick up the 60+ men and women.

However this time Trevor lost to Brian in 3. Then Charlie reversed his earlier loss, beating Tom Sparks in 4 – great. Sue Volske, 55+ was once again too strong for Judy Smith. Our previous winners, Lisa and Gary both lost, and Geoff Davenport was too strong for Ed Post. Richard Purser who had lost in 3 in the 1st test, took Hugh Colburn to 5 this time, and Kay Glenny once again lost in 4. Kay Newman and Sandra once again were too strong, but Scott went down in 4.



*New Zealand Masters Team - Trans Tasman Test Series, October  
Back Row: Richard Purser, Scott Gardiner, Ed Post, Charlie Mayhew, Gary Duberly, Trevor Colyer  
Front Row: Lisa Cowlard, Kathryn Austin, Judy Cooper, Sandra Egan, Judy Smith, Kay Newman. Absent: Kay Glenny.*

We lost 9/3, and therefore the series – very disappointing after the close first encounter.

**3rd Test**

Although we had already lost the series, we were keen not to let them have a clean sweep. Kay Glenny was injured after beating her Aussie opponent in the individuals, so she was replaced by manager, Judy Cooper.

Paul Bushell, 35+ Aussie, was also injured, and manager, Garry Irwin, played in the 50+ slot, and the younger men played down an age group – giving them the opportunity to have different opposition

Judy Cooper and Ed Post both lost in 3, then NZ won Gary Duberley and Sandra Egan’s matches. 2 all.

Trevor Colyer and Judith Smith once again lost in 3, then Charlie Mayhew and Lisa Cowlard, and Kay Newman won. 5/4 up. Richard Purser and Kathryn Austin still couldn’t master their opponents. However, Scott Gardiner repeated his 1st test win to give us 6 matches all. Unfortunately we lost by 25 games to 18.

Kay Newman and Sandra Egan were the only players to go through the whole 10 days without losing a match – a fine effort.

We were very fortunate to have a player of Kay’s calibre as a last minute replacement for injured Cheryl Te Kani McQueen.

**In Conclusion**

We are now all looking forward to the World Masters in Christchurch in 2008. Canterbury has a good team working on the organisation. Many players have indicated

their commitment, and are getting into training! I do hope lots of NZ players support this big event. It will then be interesting to see if this translates into increased numbers at our National Masters in following years.

### Australian Team

	Men	Women
35-39	Paul Bushel (ACT)	Amanda Hopps (WA)
40-44	Warren Miller (Vic)	Cindy Meintjes (WA)
45-49	Geoff Davenport (SA)	Christine Cooper (WA)
50-54	Tom Spark (Vic)	Gaye Mitchell (Tas)
55-59	Brian Cook (Qld)	Sue Volzke (WA)
60+	Hugh Colburn (NSW)	Marilyn Kennedy (Qld)
	Team Manager: Garry Irwin (NSW)	

### New Zealand Team

	Men	Women
35-39	Scott Gardiner (Cant)	Lisa Cowlard (Ak)
40-44	Gary Duberly (Ak)	Kathryn Austin (BOP)
45-49	Ed Post (Cant)	Kay Newman (Waik)
50-54	Charlie Mayhew (Cant)	Sandra Egan (BOP)
55-59	Trevor Colyer (BOP)	Judith Smith (Cant)
60+	Richard Purser (Ak)	Kay Genny (Eastern)
	Manager, Judy Cooper (Waikato)	

### JUDY COOPER

Director - Masters



*SNZ Chairman Jim O'Grady presents Auckland and NZ Masters representative Lisa Cowlard the 2007 Most Improved Senior Female Cup.*



**Squash New Zealand  
2007 Financials**



## Audit Report

To the Readers of the financial report of New Zealand Squash Incorporated.

We have audited the financial statements on pages 35-37. The financial statements provides information about the past financial performance of New Zealand Squash Incorporated and its financial position as at 30th September 2007. This information is stated in accordance with the accounting policies as set out on pages 38-41.

### NEW ZEALAND SQUASH INCORPORATED RESPONSIBILITIES

The Executive Council is responsible for the preparation of the financial statements which give a true and fair view of the financial position of New Zealand Squash Incorporated as at 30 September 2007 and of the results of its operations for the year ended 30 September 2007.

Public Sector Grants include funding received from Sport & Recreation New Zealand (SPARC).

The funding is subject to Investment Agreements, detailing acknowledged responsibilities and outcomes upon which the funding is dependant.

It is the responsibilities of the Executive Council to ensure that the obligations under the Investment Agreements are fulfilled.

### AUDITOR'S RESPONSIBILITIES

It is our responsibility to express an independent opinion on the financial statements presented by the Executive Council and report our opinion to you.

The scope of our audit has not included specific testing to ensure the Investment Agreement outcomes have been achieved.

### BASIS OF OPINION

An audit includes examining, on a test basis, evidence relevant to the amounts and disclosures in the financial report. It also includes assessing:

- The significant estimates and judgements made by the Executive Council in the preparation of the financial statements, and
- Whether the accounting policies are appropriate to New Zealand Squash Incorporated circumstances, consistently applied and adequately disclosed.

We conducted our audit in accordance with generally accepted auditing standards in New Zealand. We planned and performed our audit so as to obtain all the information and explanations which we considered necessary. We obtained sufficient evidence to give reasonable assurance that the financial statements are free from material misstatements, whether caused by fraud or error. In forming our opinion we also evaluated the overall adequacy of the presentation of the information in the financial statements.

Other than our capacity as auditors we have no other relationship with or interests in New Zealand Squash Incorporated.

### QUALIFIED OPINION

As with other organisations of a similar nature, control over income in Club Kelburn prior to its being recorded is limited, and no practical audit procedures exist to determine the effect of this limited control.

We have obtained all other information and explanations we have required.

In our opinion:

Proper accounting records have been kept by the Executive Council as far as appears from our examination of those records; and

Except for any adjustments that might have been found necessary had we obtained the information described above, the financial statements on pages 35-37.

- comply with generally accepted accounting; and
- give a true and fair view of the financial position of New Zealand Squash as at 30 September 2007 and of the year ended on that date.

Our audit was completed on 02 November 2007, and our qualified opinion is expressed as at that date.

**Cameron McGregor B.COM. FCA**

**McGregor Bailey**

**2 Crummer Road, Ponsonby, Auckland. New Zealand**

**02 November 2007**



NEW ZEALAND SQUASH (INC)

## Consolidated Statement of Financial Position

As at 30 September 2007

	Note	2007 \$	2006 \$
<b>Accumulated Funds</b>			
Opening Balance as at 1 October		1,104,468	1,072,721
Surplus / (Deficit) for the Year		82,289	31,747
<b>Total Accumulated Funds</b>		<u>1,186,757</u>	<u>1,104,468</u>
<b>Represented By:</b>			
<b>Current Assets</b>			
Cash on Hand		370	370
Current Accounts		94,640	248,543
On Call Accounts		735,003	533,538
Term Deposits		150,872	139,491
Accounts Receivable		80,858	68,904
Stock on Hand	1	47,298	52,324
Payments in Advance	3	34,646	22,241
<b>Total Current Assets</b>		<u>1,143,687</u>	<u>1,065,411</u>
<b>Investments</b>			
Loans to Clubs		10,000	20,000
Loans to National Squash Centre		293,073	293,073
<b>Total Investments</b>	4	<u>303,073</u>	<u>313,073</u>
<b>Non-current Assets</b>	5	<u>221,309</u>	<u>281,006</u>
<b>Total Assets</b>		<u>1,668,069</u>	<u>1,659,490</u>
<b>Current Liabilities</b>			
Accounts Payable		260,129	171,478
GST Payable		910	30,308
Sundry Accruals	6	21,038	35,829
Income in Advance	7	82,007	229,486
Provision for Doubtful Debts	4	117,228	87,921
<b>Total Current Liabilities</b>		<u>481,312</u>	<u>555,022</u>
<b>Total Liabilities</b>		<u>481,312</u>	<u>555,022</u>
<b>NET ASSETS</b>		<u>1,186,757</u>	<u>1,104,468</u>

This statement must be read in conjunction with the Notes to the Financial Statements and the Audit Report on Page 34



NEW ZEALAND SQUASH (INC)

## Consolidated Statement of Financial Performance

for the year ended 30 September 2007

	Note	2007 \$	2006 \$
<b>Income</b>			
<b>Levies &amp; Subscriptions</b>			
Affiliation Levies	8	461,101	435,111
Grading Levies		17,728	17,180
Associate Memberships		4,463	5,645
<b>Total Levies &amp; Subscriptions</b>		<u>483,292</u>	<u>457,936</u>
<b>Public Sector Grants</b>			
SPARC		657,753	757,925
<b>Total Public Sector Grants</b>		<u>657,753</u>	<u>757,925</u>
<b>Other Grants &amp; Sponsorships</b>			
		89,744	221,950
<b>Total Grants &amp; Sponsorships</b>		<u>89,744</u>	<u>221,950</u>
<b>Investment Income</b>			
Club Kelburn	9	126,944	124,110
Squash Dynamics	10	-	-
Interest		39,162	26,805
Other		-	26,022
<b>Total Investment Income</b>		<u>166,106</u>	<u>176,937</u>
<b>TOTAL INCOME</b>		<u><u>1,396,895</u></u>	<u><u>1,614,748</u></u>

This statement must be read in conjunction with the Notes to the Financial Statements and the Audit Report on Page 34



NEW ZEALAND SQUASH (INC)

## Consolidated Statement of Financial Performance

for the year ended 30 September 2007

	Note	2007 \$	2006 \$
<b>Expenditure</b>			
<b>Management &amp; Operations</b>			
Governance		70,613	80,159
Salaries & Fees		215,983	240,147
Overheads		39,520	29,496
<b>Total Management &amp; Operations</b>		326,116	349,802
Special Projects		88,082	92,806
Promotion & Marketing		16,868	31,839
Regional Development		189,851	282,753
Education & Development		16,974	2,121
Gradings & Rankings		53,978	49,980
National Events		63,856	70,432
High Performance Programme		490,721	627,584
<b>Total Expenditure before Depreciation</b>		1,246,446	1,507,317
Provision for Doubtful Debts		29,307	29,307
Depreciation		31,068	46,377
Loss on Disposal of Assets		3,055	-
Bad Debts		4,730	-
<b>Total Expenditure Including Depreciation</b>		1,314,606	1,583,001
<b>NET SURPLUS / (DEFICIT) FOR THE YEAR</b>		82,289	31,747

This statement must be read in conjunction with the Notes to the Financial Statements and the Audit Report on Page 34





NEW ZEALAND SQUASH (INC)

## Notes to the Financial Accounts

for the year ended 30 September 2007

### I - ACCOUNTING POLICIES

#### Statement of Accounting Policies

##### Differential Reporting

New Zealand Squash (Inc) is the New Zealand national sporting organisation responsible for the control, advancement and regulation of the game of squash throughout New Zealand. New Zealand Squash (Inc) is incorporated under the Incorporated Societies Act 1908.

The Association qualifies for differential reporting as it is not publicly accountable and does not qualify as "large", as defined within the New Zealand Institute of Chartered Accountants framework for differential reporting. The entity has taken advantage of all the differential reporting exemptions available to it.

##### Measurement Base

The accounting principles recognised as appropriate for the measurement and reporting of earnings and financial position on an historical cost basis have been followed. Accrual accounting is used to match income and expenditure.

##### Specific Accounting Policies

The following specific accounting policies which materially affect the measurement of financial performance and of financial position have been applied:

##### Operating Leases

Operating lease payments, where the lessors effectively retain substantially all the risks and benefits of ownership of the leased items, are recognised in the determination of operating profit in equal instalments over the term of the lease (refer Note 11).

##### Stock

Stock has been valued at the lower of cost or net realisable value. Due allowance has been made for slow moving stock.

##### Goods & Services Tax

The financial statements have been prepared on a GST exclusive basis.

##### Fixed Assets

All fixed assets are recorded at cost less accumulated depreciation to date.

##### Investments

Investments are loans advanced to clubs for renovations and development and are stated at cost (refer Note 4).

##### Changes in Accounting Policies

There have been no changes in accounting policies. All policies have been applied on a basis consistent with those used in previous years.



## 2 - INVENTORY COMMITMENTS

No inventories are specifically and separately pledged as security for liabilities. Inventory is subject to retention of title clauses.

## 3 - PAYMENTS IN ADVANCE

	2007	2006
ACC Levy	1,636	1,432
Computer Expenses	900	900
Insurance	11,859	10,881
Venue Hire	1,333	5,181
World Mens (Dec 2007)	15,346	-
World Squash Meeting	3,572	3,847
<b>Total Payments in Advance</b>	<b>34,646</b>	<b>22,241</b>

## 4 - INVESTMENTS

	2007	2006
<b>Herne Bay Ponsonby Rackets Club (Inc)</b>	10,000	20,000
Advancement Date :	12 June 1996	
Terms :	Original Term Five Years increased to 9 1/2 Years	
Repayment Date :	Original Date of Repayment 12 June 2001 extended to 31 December 2007	
Interest Rate :	10% per annum	
Security :	The advance is covered by an "Instrument by way of Security" dated 7 August 1996	
<b>National Squash Centre Charitable Trust</b>	293,073	293,073
Provision for Doubtful Debts	(117,228)	(87,921)
Advancement Date :	31 October 2001	
Terms :	Original Term Five Years increased to 9 Years	
Repayment Date :	Original Date of Repayment 31 October 2006 extended to 31 October 2010	
Interest Rate :	4.5% per annum	
Security :	Unsecured	

New Zealand Squash views the above loan of \$293,073 as a strategic investment in the long term future development of squash. The Board has extended the repayment date of this loan to October 2010.

No interest has been charged since the inception of the advance.

A provision for doubtful debts has been made to write this investment off over 10 years.

**5 - FIXED ASSET & DEPRECIATION SCHEDULE**

Description	Cost	Opening Book Value	Additions (Disposals)	Depreciation	Accumulated Depreciation	Closing Book Value
Trophies	500	500				500
Motor Vehicles	66,438	23,689	(44,889)	2,652	13,342	8,207
Plant, Equip & Fittings	247,719	67,029	5,378	16,383	196,876	56,221
Computer Software	21,657	4,579	-	1,844	18,922	2,735
Sports Equipment	238,710	55,153	16,838	19,739	204,657	50,891
Buildings	775,399	93,206	-	13,462	695,655	79,744
Leasehold Improvements	271,427	36,850	1,420	15,258	249,836	23,011
<b>Total</b>	<b>1,621,850</b>	<b>281,006</b>	<b>(21,253)</b>	<b>69,338</b>	<b>1,379,288</b>	<b>221,309</b>

**6 - SUNDRY ACCRUALS**

	2007	2006
Other	16,038	30,829
Warranties	5,000	5,000
<b>Total Sundry Accruals</b>	<b>21,038</b>	<b>35,829</b>

**7 - INCOME IN ADVANCE**

	2007	2006
SPARC	60,643	221,638
Southern Regions Trust – Grant	19,334	-
Pelorus Trust - Grant	2,030	-
Lion Foundation – Grants	-	7,848
<b>Total Income in Advance</b>	<b>82,007</b>	<b>229,486</b>

**8 - LEVIES & SUBSCRIPTIONS**

Affiliation levy income for the 2007 year was calculated on an SEM rate of \$29.75 plus GST.

**9 - CLUB KELBURN**

The following is a summarised Statement of Financial Performance for Club Kelburn for the year ended 30 September 2007 :

	2007	2006
<b>Income :</b>		
Trading Profits	103,532	115,424
Court Fees	211,658	208,258
Gear Hire	13,458	12,671
Gym, Aerobics, Sauna & Sunbed	165,091	163,038
Sponsorship & Promotion	1,300	2,523
Interest Received	16,214	10,424
Other Income	4,320	1,494
<b>Total Income</b>	<b>515,573</b>	<b>513,832</b>



	2007	2006
<b>Less : Expenditure</b>		
Bank Fees	3,732	3,861
Depreciation	39,631	41,081
Insurance	7,897	8,847
Management & Sundry	238,075	236,151
Power & Utilities	38,206	38,895
Rent	40,000	40,000
Repairs & Maintenance	21,088	20,887
<b>Total Expenditure</b>	<b>388,629</b>	<b>389,722</b>
<b>Net Surplus</b>	<b>126,944</b>	<b>124,110</b>

#### 10 - SQUASH DYNAMICS

Squash Dynamics ceased trading in the year ended 30 September 2006.

#### 11 - CAPITAL & LEASE COMMITMENTS

Capital Commitments

There were no capital commitments as at Balance Date.

Operating Lease Commitments

Lease commitments under non-cancellable operating leases:

	2007	2006
Current	10,260	10,260
Non-current	9,405	19,665
<b>Total</b>	<b>19,665</b>	<b>29,925</b>

The term of the operating lease is 60 months and expires 24 August 2009.

#### 12 - CONTINGENT LIABILITIES

New Zealand Squash (Inc) had no contingent liabilities as at 30 September 2007.

**Squash New Zealand  
2007 Membership Returns**



## 2007 Membership Returns

Club	Senior Men	Senior Women	Junior Men	Junior Women	Total
<b>NORTHLAND</b>					
Bream Bay	11	5	11	3	30
Dargaville			NO RETURN		
Kaitaia	69	59	35	29	192
Kamo	39	39	29	17	124
Kerikeri	63	29	26	18	136
Manaia	30	21	7	6	64
Mangakahia	27	18	20	7	72
Maungaturoto	20	13	3	0	36
Mid Western	20	9	3	4	36
Southern (Te Kopuru)			NO RETURN		
Wellsford	45	34	50	22	151
Whangarei	107	62	23	6	198
<b>TOTAL</b>	<b>431</b>	<b>289</b>	<b>207</b>	<b>112</b>	<b>1039</b>
<b>AUCKLAND</b>					
Auckland Squash Centre	9	1	0	0	10
Belmont Park	25	6	30	15	76
Browns Bay	189	74	71	38	372
Devonport	48	11	29	16	104
Eden Epsom	145	51	129	62	387
Franklin	99	46	55	18	218
Grammar	25	8	4	0	37
Henderson	226	102	54	44	426
Herne Bay	146	37	30	13	226
Howick	102	23	18	9	152
Kumeu	38	11	0	0	49
Manurewa	62	45	15	8	130
Maramarua	19	11	0	0	30
North Shore	213	84	22	13	332
Panmure	153	63	32	19	267
Papakura	36	19	12	5	72
Red Beach	69	30	19	3	121
Remuera	282	116	101	46	545
RNZAF	26	10	0	0	36
RNZ Navy	31	20	0	1	52
Royal Oak	138	32	52	24	246
Shepherds Park	15	6	0	0	21
Silverdale United	45	13	1	0	59
Te Kauwhata	23	7	7	4	41
Te Papapa	27	14	0	0	41
Titirangi	161	47	36	8	252
Waiuku	42	15	18	14	89
Warkworth	51	30	40	25	146
Weymouth	33	13	10	9	65
<b>TOTAL</b>	<b>2478</b>	<b>945</b>	<b>785</b>	<b>394</b>	<b>4602</b>



Club	Senior Men	Senior Women	Junior Men	Junior Women	Total
<b>WAIKATO</b>					
Aria	16	15	5	2	38
Cambridge	104	35	62	27	228
Frankton	33	24	8	2	67
Hamilton OB	39	26	0	1	66
Hamilton	184	76	58	38	356
Huntly	20	14	10	13	57
Leamington	42	36	15	9	102
Lugton Park	63	38	2	0	103
Mercury Bay	15	12	2	0	29
Morrinsville	58	57	23	12	150
Ngaruawahia			NO RETURN		
Otorohanga			NO RETURN		
Paeroa	25	16	5	6	52
Ruakura	71	54	13	4	142
Taumarunui	43	29	21	11	104
Taupiri	16	8	0	0	24
Te Aroha	48	54	10	5	117
Te Awamutu			NO RETURN		
Te Kuiti	27	25	3	0	55
Te Pahu	8	7	0	0	15
Te Rapa	35	31	9	7	82
Thames	39	13	19	19	90
United Matamata	63	38	31	18	150
Waihi	13	30	9	3	55
Waikato Hospital	0	11	0	0	11
Whangamata	15	5	10	4	34
<b>TOTAL</b>	<b>977</b>	<b>654</b>	<b>315</b>	<b>181</b>	<b>2127</b>

**BAY OF PLENTY**

Edgecumbe	44	26	16	8	94
Galatea	19	7	1	1	28
Geyser City	64	35	17	8	124
Katikati	46	21	24	7	98
Kawerau	5	4	1	2	12
Lakes High	48	32	10	7	97
Marist	19	14	1	2	36
Mount Maunganui	96	62	17	7	182
Putaruru	23	14	2	3	42
Reporoa	24	27	9	8	68
Rotorua Waikite	24	20	5	2	51
Taneatua	28	34	9	2	73
Taupo	66	24	13	8	111
Tauranga	158	73	95	38	364
Te Puke	74	59	58	50	241
Tokoroa	52	44	35	26	157
Waikite Valley	31	8	16	5	60
Whakatane	79	46	28	7	160
<b>TOTAL</b>	<b>900</b>	<b>550</b>	<b>357</b>	<b>191</b>	<b>1998</b>



Club	Senior Men	Senior Women	Junior Men	Junior Women	Total
<b>EASTERN</b>					
Gisborne HSOB	34	29	18	14	95
Hastings	82	44	42	16	184
Havelock North	110	42	54	32	238
Hawkes Bay LT	76	55	32	18	181
Hawkes Bay	90	70	24	18	202
Squash Surf City	49	37	36	12	134
Takapau	27	16	12	5	60
Waikare	11	3	0	0	14
Waipukurau	12	6	6	1	25
Wairoa	13	13	9	4	39
<b>TOTAL</b>	<b>504</b>	<b>315</b>	<b>233</b>	<b>120</b>	<b>1172</b>
<b>CENTRAL</b>					
Ashhurst Pohangina	22	19	15	5	61
Dannevirke	43	21	40	18	122
Eltham	31	14	3	4	52
Feilding	40	18	11	8	77
Foxton	22	14	11	2	49
Hawera	67	45	23	7	142
Inglewood	45	26	17	9	97
Kawaroa Park	143	59	34	14	250
Levin	40	16	14	10	80
Ohakea	18	6	0	0	24
Ohakune	34	28	28	14	104
Okato	28	25	23	12	88
Opunake	19	15	2	2	38
Patea	10	12	11	11	44
Puketoi	9	6	2	3	20
Rangitikei	34	13	15	2	64
River City (TCOB)	30	19	6	4	59
Squash Palmerston North	270	94	131	74	569
Stratford	27	17	9	1	54
Taihape	35	22	13	11	81
Tararua	33	16	13	10	72
Turangi			<b>NO RETURN</b>		
Waitara	19	8	4	1	32
Wanganui	99	19	16	10	144
<b>TOTAL</b>	<b>1118</b>	<b>532</b>	<b>441</b>	<b>232</b>	<b>2323</b>

Club	Senior Men	Senior Women	Junior Men	Junior Women	Total
<b>WELLINGTON</b>					
Celtic	22	14	3	1	40
Club Kelburn	16	4	0	0	20
Collegians	120	55	42	12	229
Fraser Park	66	23	13	3	105
Island Bay	69	48	23	11	151
Kapiti	91	42	21	10	164
Khandallah	89	42	40	20	191
Mana	82	22	15	4	123
Marlborough College	54	55	24	17	150
Marlborough	42	26	30	14	112
Martinborough	30	20	3	4	57
Masterton	57	32	29	16	134
Mitchell Park	159	43	48	21	271
Motueka	31	10	8	4	53
Nelson	119	39	30	16	204
Northern	32	16	15	9	72
Otaki	11	1	6	3	21
Red Star	52	17	33	18	120
Squash @ Upper Hutt	103	41	36	10	190
Takaka	24	11	2	0	37
Tawa	142	72	63	21	298
Thorndon Club	82	18	34	7	141
Waikanae	21	3	6	2	32
Waimea	47	24	20	6	97
Wainuiomata	32	16	7	6	61
Woodbourne	10	4	0	0	14
<b>TOTAL</b>	<b>1603</b>	<b>698</b>	<b>551</b>	<b>235</b>	<b>3087</b>

**CANTERBURY**

Amberley	37	24	8	4	73
Burnside	143	80	62	20	305
Cashmere	27	17	1	0	45
Christchurch Football	170	65	46	30	311
Christchurch	129	57	8	9	203
Greymouth	64	19	10	5	98
Hokitika	11	4	0	0	15
Hoon Hay	44	16	10	4	74
Kaiapoi	22	30	24	10	86
Kaikoura	50	31	18	8	107
Lincoln	11	11	1	0	23
Linwood	34	21	4	7	66
Lyttelton	8	0	0	0	8
Malvern	37	22	58	15	132
Mount Pleasant	45	14	20	7	86
Oxford	12	13	6	5	36
Rangiora	37	13	7	2	59
Riccarton	21	4	0	0	25
Richmond Wkmns Club	87	40	35	13	175
Squashways	27	0	0	0	27
Sumner	27	4	2	7	40
Westport	38	13	4	2	57
<b>TOTAL</b>	<b>1081</b>	<b>498</b>	<b>324</b>	<b>148</b>	<b>2051</b>

Club	Senior Men	Senior Women	Junior Men	Junior Women	Total
<b>MIDLANDS</b>					
Ashburton	80	24	42	16	162
Excelsior	28	7	30	16	81
Kurow Rugby	23	8	6	1	38
Mackenzie Rugby	15	13	0	4	32
Oamaru	51	29	11	4	95
Timaru OB	19	5	1	0	25
Timaru	53	16	17	2	88
Waimate	21	18	1	0	40
<b>TOTAL</b>	<b>290</b>	<b>120</b>	<b>108</b>	<b>43</b>	<b>561</b>
<b>OTAGO</b>					
Alexandra	40	21	16	10	87
Clutha	37	16	8	6	67
Cromwell			NO RETURN		
Logan Park	50	42	8	1	101
Maniototo	14	17	6	5	42
North End	42	19	2	1	64
Omakau	28	18	3	2	51
Otago	82	31	22	3	138
Otago University	179	98	12	11	300
Pirates	37	26	30	13	106
Queenstown	58	17	15	5	95
Roxburgh & Districts	10	5	3	2	20
Southern	29	18	0	1	48
Sunnyvale	53	8	2	1	64
Taieri	72	45	21	0	138
Toko	18	11	6	0	35
Wanaka	57	21	6	4	88
<b>TOTAL</b>	<b>806</b>	<b>413</b>	<b>160</b>	<b>65</b>	<b>1444</b>
<b>SOUTHLAND</b>					
Balfour	15	6	2	1	24
Central Southland	35	29	10	15	89
Clinton Community	49	33	13	8	103
Dipton	23	8	0	0	31
Fiordland	23	26	2	0	51
Gore Town & Country	23	11	2	1	37
Heriot			NO RETURN		
Makarewa	39	15	9	2	65
Mossburn	6	12	0	0	18
Nightcaps	16	11	1	0	28
Otautau	12	13	1	1	27
Riversdale	13	14	2	0	29
Riverton	9	10	11	7	37
Squash City Invercargill	82	36	31	8	157
Tapananui & Districts	23	18	5	4	50
Waiau	6	11	2	3	22
Waikaia			NO RETURN		
Waikaka	20	25	10	3	58
Wyndham	12	19	0	0	31
<b>TOTAL</b>	<b>406</b>	<b>297</b>	<b>101</b>	<b>53</b>	<b>857</b>

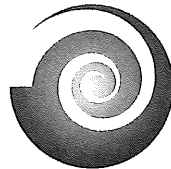
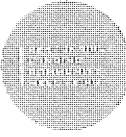
## 2008 Squash New Zealand National Events Calendar

---

April 25-27	NZ Junior Open - North Shore, Auckland
May 30-June 1	Cousins Shield & Mitchell Cup - North Shore, Auckland
June 6-8	Central Open & PSA/WISPA - Kawaroa Park, New Plymouth
June 13-15	South Island Champs - Venue TBC
June 20-22	North Island Champs - Venue TBC
June 27-29	NZ Masters Club Teams Event - Palmerston North
July 5-7	South Island Age Groups - Burnside, Christchurch
July 11-13	North Island Age Groups - Henderson, Auckland
Aug 8-10	New Zealand Open - Auckland
Aug 15-17	NZ Secondary School Champs - Kawaroa Park, New Plymouth
Aug 22-26	NZ National Championships - Individuals (Aug 22-24) - Remuera, Auckland Teams (Aug 25-26) - Remuera, Auckland
Sept 10-13	<b>Super Champs 2008</b> B Grade: Whangarei C Grade: Mitchell Park, Wellington D Grade: Hawkes Bay E Grade: Kawaroa Park, New Plymouth F Grade: Otago University, Dunedin
Oct 2-8	NZ National Age Group Championships - Individuals (Oct 2-5) Teams (Oct 6-8) - Palmerston North
Oct 19-25	World Masters (and NZ Masters Champs) - Christchurch
Oct 26-28	NZ Masters Interdistrict Teams Event - Christchurch

Squash New Zealand wishes to  
acknowledge the following 2007 Sponsors:

### MAJOR SPONSORS



**ASB Community Trust**  
*Te Kaitiaki Putea o Tamaki o Tai Tokerau*  
supported by **ASB**



### TRUSTS

**Perry Foundation**  
**Pub Charity**  
**South Auckland Charitable Trust**  
**The Southern Trust**  
**Caversham Foundation**  
**Erueka Trust**  
**Trusts Charitable Foundation**  
**Century Foundation**