

**SQUASH NEW ZEALAND
2005 Annual Report**

Squash New Zealand wishes to
acknowledge the following 2005 Sponsors:

MAJOR SPONSORS



The ASB Charitable Trust



TRUSTS

The Trusts Charitable Foundation
Active's Sports Trust Inc.
Perry Foundation
Pub Charity Inc.
South Auckland Charitable Trust
The Southern Trust
Trillian Trust
NZ Community Trust
Caversham Foundation
Mangere Bridge Sports & Cultural Society

SQUASH NEW ZEALAND ANNUAL REPORT 2005

REPORTS

Squash New Zealand Officials 2004 - 2005	2
Squash New Zealand Honours Board 2005	3
Chairman's Review	4
CEO's Report	7
High Performance Manager's Report	10
National Coach's Report	14
District Managers Report	16
Coach Development Report	17
2005 Season Results	19
Grading and Statistics Report	28
Refereeing Report	30
Club of the Year - Palmerston North Squash Club	31
Club Kelburn	32
National Squash Centre	33
Masters Report	34
2006 World Junior Mens Championships	36

FINANCIALS

Audit Report	38
Consolidated Statement of Financial Position	39
Consolidated Statement of Financial Performance	40
Notes to the Financial Accounts	42

MEMBERSHIP RETURNS

Northland, Auckland	46
Waikato, Bay of Plenty	47
Eastern, Central	48
Wellington	49
Canterbury, Midlands	50
Otago, Southland	51

Squash New Zealand

Office: UNITEC, Gate 3, Carrington Road, Mt Albert, Auckland

Postal: PO Box 21 781, Henderson, Auckland.

Telephone: 64-9 815 0970. Facsimile: 64-9-815 0971

Email: squashnz@squashnz.co.nz Website: www.squashnz.co.nz

Squash New Zealand Officials 2004-2005

PATRON

Dame Susan Devoy

EXECUTIVE COUNCIL

Gerard DeCourcy (Chairman), Neil McAra, Jim O'Grady, John Sangster, Alastair Snell, Grant Utteridge

PROGRAMME DIRECTORS

Grading & Statistics: Steve Scott;

Masters: Judy Cooper; Refereeing: Jan McAra

SELECTORS

Senior/Junior: Dave Clarke (Convenor), Willie Bicknell, Michel Galloway, Nicky Dunlop, Aileen Buscke,

Masters: Judy Cooper (Convenor), Wayne Seebeck, Sandra Tinkler

NATIONAL STATISTICIANS

Women: Vivienne Brumby, Men: Willie Bicknell

NATIONAL OFFICE

Chief Executive: Peter Fergusson

Administration Manager: Vivienne Brumby

Coach Development Manager: Glen Wilson

High Performance Manager: Brett Reid

National Coach: Dave Clarke

High Performance Assistant/Funding: Kerry Torrie

Squash Development Manager: Garry Wood

Receptionist: Jan Lewis

Contract Accountant: Hamon & Associates

HON.SOLICITOR:

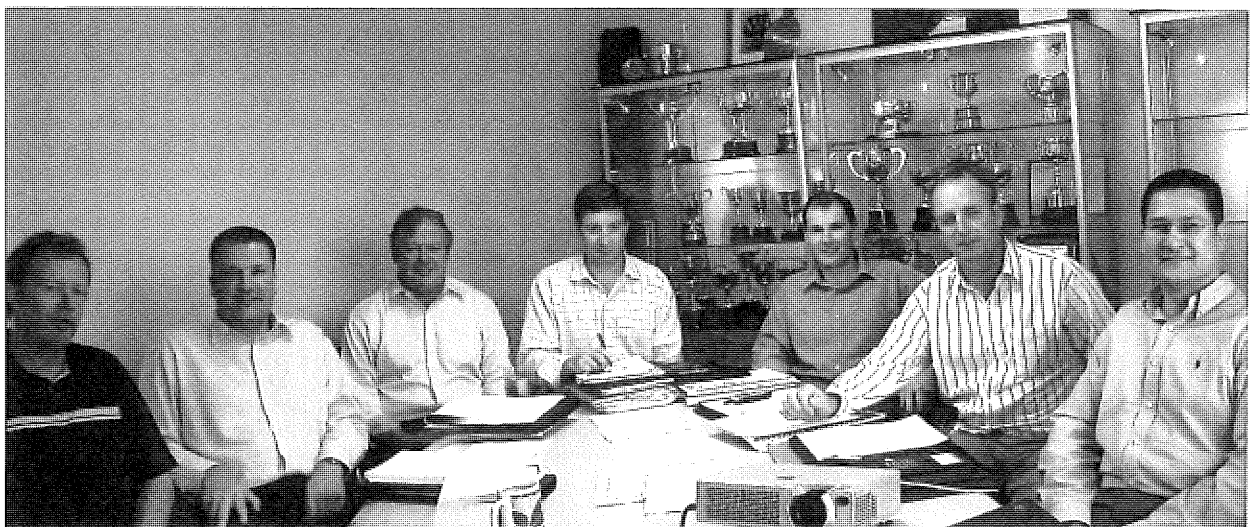
Michael Sumpter

AUDITOR

McGregor, Bailey & Co

LIFE MEMBERS

Neven Barbour, Bryden Clarke, Norman Coe, Murray Day, Dame Susan Devoy, Dardir El Bakary, Butch Gifford, Don Green, Bill Murphy, Ross Norman, Susie Simcock, Michael Sumpter



Squash New Zealand Executive Council; Jim O'Grady, Alastair Snell, John Sangster, Gerard Decourey (Chairman), Neil McAra, Grant Utteridge and CEO Peter Fergusson.

Squash New Zealand Honours Board 2005

CLUB OF THE YEAR

NEW ZEALAND NATIONAL MEN'S SQUASH CHAMPION

NEW ZEALAND NATIONAL WOMEN'S SQUASH CHAMPION

MOST IMPROVED SENIOR PLAYERS

Female

Male

NEW ZEALAND SENIOR INTER-DISTRICT TEAMS CHAMPIONSHIP

Women

Men

NEW ZEALAND JUNIOR MEN'S SQUASH CHAMPION

NEW ZEALAND JUNIOR WOMEN'S SQUASH CHAMPION

MOST IMPROVED JUNIOR PLAYERS

Female

Male

NEW ZEALAND JUNIOR INTER-DISTRICT TEAMS CHAMPIONSHIP

Men

Women

DEREK COOKE MEMORIAL TROPHY FOR REFEREEING

NEW ZEALAND COACH OF THE YEAR

NEW ZEALAND TEAM COACH OF THE YEAR

NEW ZEALAND JUNIOR COACH OF THE YEAR

NEW ZEALAND MASTERS CHAMPIONSHIP

35+	Men	Mike McSherry
	Women	Lisa Cowlard
40+	Men	Danny McQueen
	Women	Kathryn Austin
45+	Men	Charlie Mayhew
	Women	Cheryl Te Kani-McQueen
50+	Men	Wayne Seebeck
	Women	Freda Walker
55+	Men	Tony Naughton
	Women	Kaye Jackson
60+	Men	Richard Purser
	Women	Judy Cooper
65+	Men	Eddie Condor
70+	Men	Trevor Coulter

**NEW ZEALAND MASTERS INTER-DISTRICT
TEAM CHAMPIONSHIP**

Auckland

Palmerston North

Kashif Shuja

Shelley Kitchen

Jaclyn Hawkes

Martin Knight

Auckland

Auckland

Chris McEldowney

Joelle King

Amanda Cranston

Chris McEldowney

Central

Central

Phil Morgan

Danny McQueen

Shannon Patangata

Jenny Bell

Remuera

Herne Bay/Ponsonby

Remuera

Titirangi

Okato

Cambridge

Ohakune

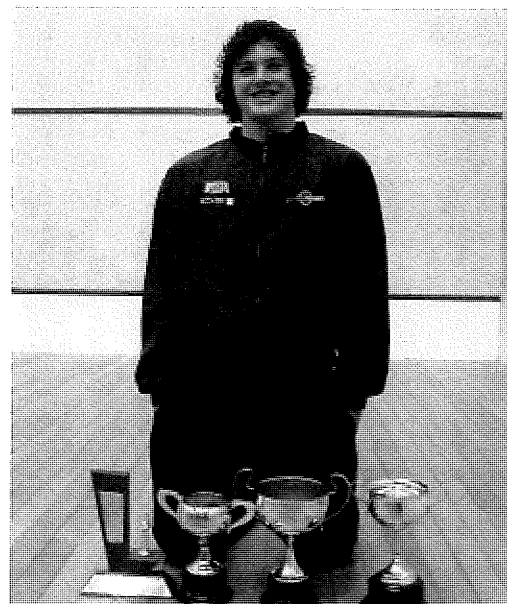
Okato

Canterbury

Bay of Plenty

Bay of Plenty

Waikato



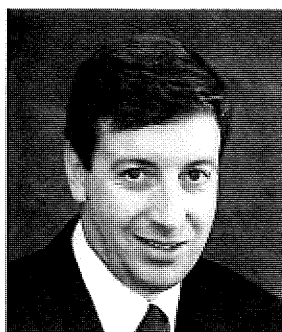
*Central's Chris McEldowney, 2005 New Zealand
Junior Boys Champion and Most Improved Player.*



Remuera winning B Grade Mens and Womens teams. Back Row (from left to right): Richard Notter, Andrew Turner, Stephen Hawkes, James Leary (Men's coach) Matt Anderson, Brett Meyer and Adrian Lodge, Front: Margie Sanders (player/manager), Louisa Knight, Aileen Buscke (Women's coach) Catherine Carlson, Roz Tansey, Fi MacDonald. Absent was Amy Alison and Lana Harrison



Palmerston North's Mens winning C Grade team. From left; Ben Scott, Phil Blummont (Manager), Ross Blair, Cameron Wilson, Ross Cooley, Matt Pickering, Grant Watts and Blair Elliott.



Chairman's Review

In July 2005 Squash came within just a few votes of being an Olympic sport featuring in the London 2012 games. The information gathered for presentation to the International Olympic Committee confirms that Squash is one of the great global sports. Our considerable disappointment was mixed with some pride that Squash headed the list of non Olympic sports vying for a position on the Olympic programme. Our time will come.

Participation

Squash in this country is played primarily in its 230 clubs. All sports compete with a range of non sporting activities for the consumers' leisure dollar. Squash is a great product. Our ability to sell it depends on our ability to make it accessible and a rewarding experience.

In particular this depends on the abilities of our clubs to open their front doors and present an environment where people want to gather.

Squash New Zealand support the districts and clubs in this development.

Earlier this year we appointed a part time Squash Development Manager to support our Squash Development Officers. Our officers are hard working and energetic people. Their effectiveness will largely depend on their ability to access our clubs and the clubs' response to the challenges of providing an environment and programmes that sell Squash to the uninitiated. I thank Gary Wood, our Development Manager for his efforts in the last year. We want to expand on this role.

We have revamped the website in the last year to make it more attractive and useful. Thanks to Ross Stokes for his efforts and to the Squash community for their considerable feedback.

The website will become the medium of choice for the sharing of information which will assist clubs in the challenges they face. Clubs should look at the club toolkit on the site. We hope to post information on court maintenance which is a ongoing issue.

Teams Event Squash is one of the best experiences club players can have. Whether A or F grade there is an ability to represent your district at a national final. We are relaunching the Teams Event with a new brand.

We continue to produce more written resources. During the year Tournament Draws and Leagues (Book 11) was published.

There is considerable evidence of increasing numbers within our junior ranks. I suspect that many clubs do not know how many school pupils pass through their facility nor who they are. Having this information helps up manage our sport. It is equally important that these young people are provided with an opportunity to become involved with the sport and find out all that it has to offer.

High Performance

We continue to make progress in this area. As this evolves much thought is being given to the structure within the high performance area.

It is clear that the standards of our elite players are improving. We now have 5 women and 2 men in the world's top 100 rankings. The next tier of players show the ability to move on and obtain world rankings. They are exposed to international Squash through our annual PSA and WISPA tournaments.

We want to support them to become the best players that they can.

It is clear that our best coaches must spend more of their time with our elite players. To support this it is important that we have the right structure to enable talented youngsters to access coaching, be taught the right skills and to be given the opportunity to progress.

Glen Wilson has now spent his first year in his role as Coach Development Manager and is clearly already having an impact.

The high performance area is meticulously managed by Brett Reid. Experts within and outside Squash were brought together for a planning day in August which confirmed many of the things we are doing but provided inspiration for continued improvement.

Our National Coach, Dave Clarke continues to set the standard and expectations for our senior athletes at the highest level. He is highly regarded as one of the best international coaches.

Our junior womens team performed particularly well, defeating Australia in a test series before finishing seventh (and above Australia) at the World Championships in Belgium. Congratulations to Joelle King, Jackie Laurenson, Kerry Wickett, Amanda Cranston, with Dave Clarke and Julie Hawkes as Manager/Coaches.



New Zealand Junior Womens team relaxing at the World Champs in Belgium. New Zealand beat Australia to finish 7th.



Chairman Gerard DeCourcy presenting NZ Mens Champion Kashif Shuja with the Riddiford Gold Cup.

Our senior men attend the World Championships in Pakistan in December and we wish them well.

2006 will be an exciting year. The Commonwealth Games are in Melbourne in March and our athletes are involved in intensive preparation. The memories of gold medals in Manchester 2002 live long in our memories.

In July next year Palmerston North hosts the World Junior Men's Championships. In preparation for this and as part of the Palmerston North Squash Club development 3 new ASB courts are being constructed. The chance to see some of the world's best junior players in a new facility is something we are eagerly looking forward to.

I thank all of those who have worked so hard in the high performance area, our coaches for their selfless work and particularly our athletes. We are proud of their achievements and of the standards they set as ambassadors of our sport.

Best Practice

We continue to strive to be the most effective organisation we can with limited people resources and budget.

Within Squash New Zealand we have worked with SPARC to improve our governance of the sport.

To support our districts we have asked Chris Ineson to undertake a major project aimed at identifying the areas which will enhance district capabilities.

With Thanks

Ultimately the success of our sport depends on the willingness of people to put their hands up and make a contribution. The calibre of our people is perhaps our greatest asset.

I would like to thank:

- My Board members Jim O'Grady, John Sangster, Alastair Snell, Grant Utteridge and Neil McAra – all volunteers who take on considerable responsibility and give of their time freely. A very capable group.
- Our Chief Executive, Peter Fergusson – always completely committed to making our sport the best it can be.
- Our Administration staff Vivienne Brumby, Kerry Torrie and Jan Lewis – always enthusiastic and dedicated.
- Rob Walker – Club K has had another great year and the income it produces for Squash New Zealand is a critical part of our funding.
- The Trustees of the National Squash Centre Bruce Davidson (Chairman), Michael Sumpter, Mike Greig, Margaret Cotter, Susie Simcock, Andrew Codling – this is an important facility showcasing what a modern Squash environment can look like. Thank you for your efforts which have progressed the centre this year.
- Our many District Presidents, Committees, Club Administrators, Coaches, Referees and Volunteers. There are hundreds who share the passion for one of the great sports. Thank you for your commitment to the game. It is the efforts of you all that give us great confidence for the future of Squash as we work to sustain and grow our game.

GERARD DECOURCY

Chairman



CEO's Report

In penning my thoughts for this year I am conscious that the work Squash New Zealand undertakes and achieves each year is still only one very small part of the puzzle to making our sport stronger. To all those people throughout the Squash fraternity (volunteers, officials, players, employees etc) that have made a difference this year – my heartfelt thanks.

We continue, as a sport, to face a future that rewards those that meet the needs of 'the beast' called a consumer – we are all aware that peoples service expectations are growing, social trends relating to participation and volunteerism are changing, our reducing leisure time seems to be reducing and people are more selective in what they choose to do with their time.

The key challenges remain... making squash an easy activity to access (getting our doors open – where possible), providing environments that are attractive, creating a leisure experience that is fun to be involved in and, often, achieving these things with a reducing base of resource.

It has been another frantically busy year 'behind the scenes'. Those that are involved within Clubs, Districts and/or voluntary organisations will know (only too well) the gap between the work that is done, as opposed to the work that is physically seen... the iceberg theory (only 20% is visible above the water line).

It is worth taking time to acknowledge a few of the 'below water line' activities, relationships and outcomes this year. They include:

- **Finances** – The slight increase in overall income does little to reflect the challenges encountered to ensure key activities remained 'on track'.

Disappointingly the impact of legislative and regulatory changes to Charitable Trust funding (ie: Smoking legislation, distribution changes) meant that we (like many others) were unable to realise the funding budgeted for the development of some aspects. We reacted early to these changes by adjusting planning, in discretionary aspects of our budget, to ensure a managed financial outcome.

The ongoing commitment to growth and, particularly, Regional Development is reflected in increased expenditure. As is the increased investment and activity in the High Performance area in preparation for the

Commonwealth Games - which loom in 4 months time.

- **SPARC** – It would be remiss not to mention the 'debt of gratitude' we owe to SPARC for their ongoing support and contribution – both financially, but also importantly, through their proactive relationship and business improvement initiatives that they have offered.
- **Regional Development** – The introduction of two new roles (Coach Development and District Development Manager - part-time) in November 2005 was a welcome beginning to the 2005 year. The planning and delivery has taken time to 'bed in' however the beginning of change and progress in these areas is starting to show.

One of the greatest challenges this year (and going forward) has been the review of Squash New Zealand's Regional Development support strategy (through funding, measurement and setting of core goals).

The changes now being introduced are a significant move from the original District Development model developed 9 years ago – the expectation and wish is for a support system that reflects growth potential, provides clear 'core' goals and a measurement process that identifies progress - while providing Districts with the autonomy and accountability for managing their own resources and approach to attaining goals that reflect their individual capabilities. A lofty target and one that will be a 'work in progress'.

Being undertaken at this time – and to be presented at a New Zealand Conference Workshop - will be the outcomes of a Capability Audit completed by Driving Forces (Chris Ineson). This research is designed to identify our capability to deliver our sport (through the chain... Club, District and Squash New Zealand) to members. In doing so – also identify where (and how) we can improve this delivery and our capabilities as a sport.

- **High Performance** – Two World Silver (Lara Petera, Louise Crome, Glen Wilson and Shelley Kitchen) and one World Bronze medal (Shelley Kitchen and Tamsyn Leevey) at the World Doubles Event in Chennai in December was a fantastic result.

This was followed by the Trans Tasman Test series win to the New Zealand Junior Girls team in June – this

team went on to finish 7th at the World Junior Girls event in Belgium. Showing the potential (given their ages) to be a top 3 contender in the next World Junior Girls Championships.

Certainly all are achievements that the players (in particular), the Coaching and Management team of Dave Clark, Brett Reid and all the High Performance Coaches can be proud of.

All eyes are (and have been for some time) unashamedly focused on Commonwealth Games 2006 – the preparation has been intense, commitment from the players (and coaches) impressive and the planning impeccable. The New Zealand Commonwealth Games Team will be announced at the Squash New Zealand AGM and my thoughts (and best wishes) go to those announced on the night – but also to the players who will miss selection this year...they have been equally key to the team effort – many thanks.

- **Junior Growth** – Again a highlight of our sport – the continuing growth of participation at this level (our future). A trend also reflected in the exploding tournament entry numbers at key events and the lifting competitive and grading levels of these young players.
- **Districts and Clubs** – At the heart of the Junior growth is our Districts and Clubs – great to see some of the barriers being removed. Many have recognised that these young players often come with very capable, willing and supportive parents who make great volunteers, coaches and administrators.

Again many of my highlights during the year have revolved around people - enjoying the humour, goodwill, focus on the 'common cause' and great support that is evident throughout our sport – this is something that Squash people take for granted but, interestingly, does 'set us apart' from many sporting organisations – long may it remain and grow.

- **Sponsors and Trusts** – our loyal sponsors - Dunlop, Crown, Prince and Farah Clothing continue their great support. Charitable Trusts continue to provide irreplaceable and considerable support to our sport – not only at National level but throughout the country – and deserve our thanks and support.
- **Unitec** – A growing and mutually beneficial partnership continues to develop. Many of our benefits are physically obvious – the National Squash Centre and Squash New Zealand Offices are based on site. Perhaps less obvious has been the access to student research resources and a joint project surrounding the development of Squash New Zealand's Strategic vision and leadership processes (which is ongoing).

- **Website** – The launch of our new website happened at Easter – after the expected few technical hitches this tool has proven its worth and the feedback on the new layout and design has been fantastic – thanks.

As technology improves – so too will our investment and involvement in this avenue of communication and operation. There are several topics 'on the table' at this time to review and consider to improve the way we communicate, interact and provide resources to our members. Perhaps too early to make promises – however it will be an area to watch as we go forward.

A large number of people help and sacrifice their time to make things happen – at the risk of missing some - these include:

- The Squash New Zealand team - Vivienne, Brett, Dave, Glen, Garry, Kerry and Jan. A team that always 'punches above their weight'.
- The Squash New Zealand Board – enormously supportive, knowledgeable and providers of strong governance.
- District Presidents and Development Officers – a tough year when things are evolving and changing but always providing great feedback and collective support...many thanks.
- Our voluntary Directors
 - Butch Gifford – supplier of humour, wise words and stable Oceania guidance (and representation)
 - Judy Cooper – always willing to roll up sleeves and get the job done with zero fuss – thank you Judy
 - Steve Scott – Mr Stats...always working away, fixing problems before they start and getting things done – you know we can't do without you. Thanks Scottie.
 - Jan McAra – 'pushing the Refereeing barrow' to ensure we begin to develop greater depth and involvement in the critical area of refereeing – thanks Jan

To those not mentioned...referees, volunteers, parents, players, coaches, and partners – my sincere thanks.

PETER FERGUSSON

Chief Executive



Bonita Central Junior Boys and Girls teams. Winners of both New Zealand Junior teams titles and Gifford Cup for Best Overall Junior District.



Auckland Senior Mens side, winners of New Zealand Inter-district Teams event. From left; Campbell Grayson, Gary Duberly, Kashif Shuja, Graeme Wilson and Nigel Lloyd (Manager).



High Performance Manager's Report

Introduction

As I reflect on the past year, and look forward to 2006, I recall one observation and one question I heard at a conference recently: (1) Sport is becoming more complex, and (2) How do we keep sport fun and creative if 1 is true?

With those two thoughts in mind, here's my report for 2005.

Key Areas

1. PSA/WISPA Events
2. Prime Minister's High Performance Coach Scholarships
3. Academy of Sport
4. SPARC
5. High Performance Planning Day
6. High Performance Programme 2006

I. PSA/WISPA Events

The ultimate measure of success of the Squash New Zealand High Performance Programme will be competitive results. While Squash New Zealand is committed to the major international events (e.g., World Championships, the Commonwealth Games, and World Junior Championships), the two professional circuits, PSA & WISPA, provide our best players with regular opportunities to measure themselves on the world stage.

In addition, these events also provide our referees with opportunities to further develop their skills, as well as exposing both the wider squash fraternity and the general public to international squash, which in turn allows clubs to attract Trust funding and sponsorship.

Squash New Zealand actively encourages and supports New Zealand players to participate and succeed on the WISPA and PSA circuits. One way to achieve this is to provide world ranking tournaments in New Zealand, but this cannot be done without the support and cooperation of Squash New Zealand's partner districts and clubs.

In 2005, the following clubs/districts hosted PSA and/or WISPA events.

- A. Christchurch Squash Club (PSA & WISPA, South Island Champs)
- B. Squash Southland (PSA & WISPA, Southland Classic)
- C. Kawarua Park Squash Club (WISPA, Taranaki Open)
- D. Hamilton Squash Club (PSA, Waikato Open and North Island Champs)

E. Squash Auckland (PSA, Tradestaff Auckland Open, held at Remuera Rackets Club)

F. Royal Oak Rackets Club (PSA, Barfoot and Thompson Royal Oak Open)

One of the High Performance Programme goals is to provide "excellent competitive opportunities" to our players. The competitive opportunities afforded by these events are absolutely critical and I want to thank all the clubs and districts who hosted events in 2005.

Your support and enthusiasm highlight what can be done when everyone shares the same vision.

2. Prime Minister's High Performance Coach Scholarships

The Prime Minister's High Performance Coach scholarship programme is a SPARC initiative aligned with the New Zealand Coaching strategy objectives of creating **More Time** for coaches to coach, **Increased Recognition and Status** for coaches, and **Improved Quality** of coaches. The aim of the scholarships is to provide high performance coaches with a further opportunity to develop the skills and experience necessary to become world class high performance coaches.

Ten high performance coaches from eight districts were awarded scholarships this year, totalling \$41,500 in grants. This funding enabled the 10 coaches to attend National Reserve and Development Squad Camps, Coaches Meets, as well as travel to Australia for the Australian National Junior Series, and to up-skill in the sport science disciplines.

These scholarships make a significant contribution to the high performance programme and will, I hope, continue to do so in 2006.

3. New Zealand Academy of Sport

Athletes

25 players were "carded" this year (24 in 2004), enabling them to access, in some form, sport science, sport medicine, and ACE (Athlete Career Education) support through the New Zealand Academy of Sport.

In the past, the number of "cards" per sport was decided by the Academy. As of this year, National Sport Organisations decided for themselves how many players they wanted to card, giving the sports greater flexibility over how they allocate their Academy spend.

It is anticipated that in 2006 squash will again have around 20-24 carded players.

"The world is becoming turbulent faster than organisations are becoming resilient ..."

Hamel & Valikangas, 2003

Providers

Squash New Zealand's high performance programme is fortunate to have the services of the following sport science, sport medicine and ACE providers:

Dr Graham Paterson (medical director), Lisa Weaver (physiotherapist and physiotherapy coordinator), Nigel Harris (lead strength and conditioner), Jamie Denton (strength and conditioner), Christine King (dietitian), Ralph Maddison (sport psychologist and ACE advisor), and Gaye Bryham (ACE coordinator). I should also mention Kelly Sherrin, who is assisting Lisa with physiotherapy support.

I thank all the providers for their expertise, their professionalism, and, in particular, their time. As we plan for next year it is also appropriate for me to thank Martin Dowson (Academy of Sport North) for his support of the squash programme.

Coaches

In addition to the carded players, squash also has seven carded coaches. These coaches can access coach support services (e.g., Silicon coach training) through the Academy of Sport coach support network.

4. SPARC

As a significant investor in the Squash high performance programme, SPARC are critical in enabling us to make things happen. But SPARC also provide support through programmes, information sharing (e.g., facilitating sport to sport communication), and document sharing (e.g., templates).

In addition, SPARC's high performance director for squash provides valuable support for the high performance team, while at the same time challenging our assumptions and thinking processes to help ensure our actions adhere to best practise. This external input is invaluable as we strive for continuous improvement.

5. High Performance Planning Day

With the aim of ensuring the Squash High Performance Programme is one that can carry us successfully forward over the 4 years post-Melbourne Commonwealth Games, a strategic planning day was held in September.

Stakeholders in the form of players, coaches, administrators, sport science providers, Squash NZ personnel and squash enthusiasts, as well as people from outside of the squash community, contributed to the day.

A final report of the day's proceedings is available from the author, however, it is worth providing a couple of quotes to convey the flavour of the day's outcomes:

"A consistent theme that emerged was the *dichotomy* that exists in terms of investing enough coaching energy and financial resources into a smaller group of players at the top while not losing the growth at grassroots level in the districts. The challenge will be to achieve the necessary structure, distribution of financial resources and clarity in terms of accountability, for some improvement to be made in this area."

"... districts and clubs have to be encouraged and supported to assume greater responsibility for those players who aspire to the top. This means that the lower tiers are not neglected but rather placed in the care of others while also being funded from a different pot of funds. I acknowledge immediately that this is easy to write in words but it is a thorny issue to resolve in practice."

"The provision of more *international exposure* was another common theme to emerge. Again, this will require a review of the distribution of resources ..."

Some of the immediate consequences from the planning day were a strengthened commitment to reducing the number of players in the High Performance Programme, an increased focus on the needs of our senior elite players, and a renewed desire to further develop a high performance culture driven by values consistent with being the best in the world.

I want to thank everyone who contributed to making the day a success.

6. High Performance Programme 2006

As I write this (in late October), it feels like the 2006 high performance programme will probably be defined in three ways.

The first is the competition programme. Starting with the World Men's Champs in Pakistan December 2005, followed by the World Doubles Champs in Melbourne (January, 06), the Commonwealth Games in Melbourne (March), the Australian Junior Series (April), the NZ PSA and WISPA events (May & August), the Trans-Tasman Junior Series (June), the World Junior Men's Champs in Palmerston North (July), and the World Women's Champs in Canada in September, the next 10 months will present a significant resourcing challenge (both financial and human).



New Zealand Womens finalists. From left; Runner-up Louise Crome and 2005 Champion Shelley Kitchen.



New Zealand Mens finalists. From left; Runner-up Callum O'Brien and 2005 Champion Kasbif Shuja.

Obviously, the World Junior Men's Champs will provide a key focus for elite junior men, the coaches working with them, and the referees chosen to officiate. The Champs will provide a huge opportunity for the squash community to: (1) see world class squash at home (hats off to Grant Smith and his team at Central Squash for taking this project on), and (2) appreciate how tough the world environment is for our aspiring juniors.

Secondly, the Commonwealth Games, and more specifically our results at this event. The Melbourne Games have the potential to influence future funding of the high performance programme. While we have enjoyed great success at recent senior international events (3rd at 2004 World Women's Champs; 3 medals at the 2004 World Doubles Champs), and at previous Games (we topped the medal table at Manchester in 2002), we must recognise how difficult it is to win medals on the international stage.

Thirdly, and aligned with the above, SPARC's review of their investment in New Zealand sport will be concluded by the end of June, and again, the implications for the high performance programme are clear. SPARC is looking closely at *how* it funds sport in New Zealand, including which sports it continues to "back". I don't know what the outcome of this review will be but I will be very surprised if they decide to increase the number of performance sports (currently at 21).

In short, the next 8 months will almost certainly help shape the environment we are working in a year from now. In

the meantime, we will control the controllables, work hard and smart, and continue to make sure we are all rowing the boat in the same direction (an appropriate metaphor given rowing's recent success!).

Conclusion

Lastly, I want to acknowledge the efforts of Jan, Peter, Dave, Kerry, Glen, Garry and Viv at the Squash New Zealand office. Like almost all sport organisations, whether it be at NSO level, regional/district level, or club level, the challenge is to not only stretch the resources (human and financial) to meet the ever-increasing daily demands of contemporary sport, but to also ensure that our individual and collective legacy is one of substance and sustainability.

On that note I'll leave you with a definition of success I heard recently:

"Success is when you hurl yourself full-length at failure and miss."

Thank you.

BRETT REID

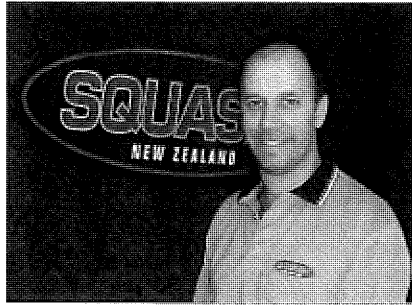
High Performance Manager



Gisborne HSOB Squash - Womens E Grade winning team. Standing: (from left to right) Trish Wilson, Teo Arani Wilson, Te Whaikura Taingabue (mascot), Rose Martin, Jaye Woodford (Coach). Sitting: Kiri Collier, Maiangi Mackey, Colleen Poharama.



*Palmerston North's winning F Grade Nationals team. Back row (from left to right): Kory Skipper, Scott Hutchings, Winston Mason
Front row: Sam Nash, Tom Nash. Absent: Tyron Fourie, Jack Savenge, Dave Brandon (Manager)*



National Coach's Report

This has been another busy year for the Squash NZ High Performance Programme. We have had another strong year with good performances internationally and some excellent efforts at the World Doubles in December and World Junior Women's Championships in August.

The Districts across the country have been building on the programme development from the previous year, this being reflected in a 258 entry into the National Junior Championships. They have been fine tuning the district programmes and adding experienced personnel to their staff with more full and part time coaches in place across the country. District Boards should pat themselves on the back for the support of these programmes which are crucial to the success of squash in New Zealand.

The international scene has been busy with Shelley Kitchen attaining her highest ranking of 11 whilst Tamsyn Leevey made strides to No24 in the world, beating the world no 8 at that time Omneya Abdul Kawy. Louise Crome and Jackie Hawkes have made some excellent progress this year on the international scene with Louise having a high of 41 with results over world ranked 25, 34 and 35 over the past few months. Jackie won her first WISPA title with some great wins and recently beat the World Ranked 35 and World Ranked 22 in Japan after some great performances at the National Championships.

Kashif Shuja and Callum O'Brien have led the way in the men's gaining year highs of 51 and 59 respectively. The second part of the year has seen them drop back slightly due to illness and injury but I'm confident that we will see good improvements now the guys are fit and well again. Campbell Grayson, Martin Knight and Josh Greenfield have all had a solid year consolidating their world rankings with a big year in prospect for 2006.

Campbell Grayson and Joelle King were also successful in late December, both winning their respective age group titles at the Scottish Junior Open in Edinburgh

With the Men's World Champs in December this year we have to go back to December 2004 when the team that went to the World Doubles in India performed above expectations.

The Kiwi team returned with two silver and one bronze medal. Glen Wilson and Shelley Kitchen grabbed the silver in the mixed doubles after winning the semi final in a titanic match. They then had game balls in every game going

down in three to the current World Women's No. 1 and ex World Men's No. 1 Rachel Grinham and David Palmer. Lara Heta (nee Petera) and Callum O'Brien performed well before finishing in a creditable 6th position.

In the Ladies Doubles Louise Crome and Lara Heta combined well and proved to be the surprise package at the event taking the silver medal with some excellent wins along the way. Shelley and Tamsyn also acquitted themselves well winning the bronze. The team functioned very well together, which definitely contributed to the overall result.

The Australian Tri Series again saw a large group of National Squad players head across the ditch to Adelaide. Even without our full compliment of players we still managed to pick up several titles across the age groups. The trip was a little more difficult this year with a poor format for the event which was held in three separate venues which were several kilometres away from each other. The trip still gives our players good competition against international competition.

The Trans Tasman Test Series saw New Zealand beat Australia 2-1 in a set of difficult circumstances for Australia. They sent over a depleted team after losing two of their players to injury and then lost a third to a ruptured ACL ligament in Match 2 of the series. The squad of Joelle King, Kerry Wickett, Jackie Laurenson, Amanda Cranston, Te Wai Hope and Lana Harrison performed well. The team selected after the Trans Tasman then moved up a gear before heading off to the World Junior Champs in Belgium.

The young team of Joelle King, Kerry Wickett, Jackie Laurenson and Amanda Cranston finished in very creditable 7th position with three of the four players eligible for next time.

Joelle played well in the individual event making the top 16 before going down to the Egyptian No 2 Sara Badr. Kerry Wickett reached the top 32 with Jackie and Amanda making the last 64.

In the teams event the girls performed very well losing in a close match to England 2/1 in the group, but beat Mexico 3/0 to set up a last 8 match with eventual champions Hong Kong. We then lost to Malaysia in an extremely close match to leave us Australia to beat in the 7/8 play off. Kerry came up trumps after being 2/0 down to defeat



New Zealand Junior Womens team. From left; Judy Hawkes (Manager), Joelle King, Jackie Laurenson, Amanda Cranston, Kerry Wickett and Dave Clarke (Coach).

Jessica Gillet 3/2. Julie Hawkes was instrumental in the preparation of the team and once again showed what an asset that she is in the coaching arena. The team now has opportunity to perform well at the next World Juniors in 2007. Watch this space.

The selectors should also be thanked for the time, work and effort that they put in. Nicky Dunlop, Aileen Buscke, Michel Galloway and Willie Bicknell have been a great help. Willie is now stepping down and will be missed from the panel for his knowledge, openness, vision and his ability to question, ensuring a fair and comprehensive process.

The High Performance coaches across the country have done some excellent work as have a number of club coaches across the districts who have participated in a number of district and club programmes which are already bearing fruit in a lot of areas. A special thanks goes to Robbie Wyatt and Julie Hawkes for their tireless efforts in trying to raise the bar.

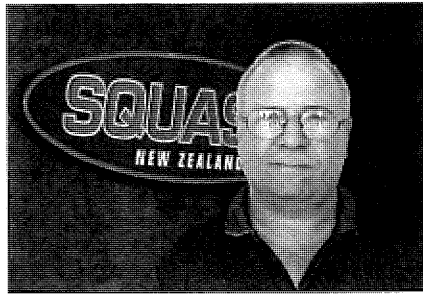
We have a very busy time over the next few months with the World Individual Champs, World Men's Team, World Doubles and Commonwealth Games all on the horizon. The players are currently training hard for these events along with a strong doubles emphasis for the all important Games in Melbourne.

In New Zealand we must continue to work together to be successful. We have made giant leaps in the past few years but must make some tougher decisions in the coming years. We have been established nearly four years now and it is time for a number of changes to sharpen the arrow. This will occur over the next few months as we strive to improve and concentrate more resources at fewer players to provide the support that will enable them to continue to move forward. These players will need to be more committed and more professional in our efforts to raise the bar.

Talent is not enough, desire, commitment and attitude mixed with talent and direction is what is going to keep the boat moving forward, the standard is getting higher, commit to jumping on the boat now before it sails away!

DAVE CLARKE

National Coach



District Development Report

The Squash New Zealand Strategic Plan is the cornerstone of a planned managed future for the code.

From the website

"The structure of Squash New Zealand's plan for the game is made up of three key elements – Growth, Best Practice and Performance. These elements are intricately linked and for the sport to be successful into the future, each of these elements must be developed.

The Growth of the sport relates to participation – the foundation of the sport – encouraging more people to become and stay involved, thereby increasing the depth of players, coaches and administrators involved in the game. Performance is purely about excellence on and off the court – producing world champions and world class people. These people are the stars of the sport, whose profile encourages greater interest and participation.

Growth and Performance are natural goals for any sport, however the ingredient that ensures that these elements are successful is Best Practice... having the right structures, best management processes, right funding, great planning, direction and an innovative approach."

This year has seen some important changes introduced to the way Squash New Zealand allocates a large part of its development budget. The new focus is on greater autonomy to the districts to enhance the delivery of local, regional and national development components of the game. In 2006 the money will be allocated to the District to determine the way in which it will be spent in order to further the key strategic element of growth. Rather than SNZ dictating how the money is spent that responsibility will be handed over to the district. This will enable the Districts to plan and deliver their development programmes with a view to meeting local needs. There will be a revised reporting system that will be introduced to ensure there is adequate monitoring and accountability of the key initiatives back to SNZ. In this way SNZ will be able to ensure the value of the investment it makes on behalf of its members.

Because of those changes 2005 has seen a significant change in the way that Squash New Zealand will ask the Districts to report on the Regional Development Programme.

The Board of Squash New Zealand is seeking reassurance from the Districts that the money allocated to each of the districts to encourage sound development initiatives is the best way to encourage the growth of the game. This needs to

be supported by real evidence of that growth and comfort that the game is in a healthy state in each district.

The current structure based on Squash Development Officers has been in place for nine years and has seen some outstanding results in different districts with some great people and some very successful programmes. However a lot of the supporting evidence of just how well the initiatives were working was anecdotal, unsupported and in some cases inflated. With a diverse range of reporting formats from the Districts collecting meaningful information was difficult. A new reporting structure that reflected the needs was desperately required.

To enable each District to plan its annual development work a template measuring specific annual outcomes has been developed. All Districts have been invited to contribute to that template. It is now ready to be introduced for the new SNZ year. The District Performance Report will be supported by a monthly report from the district detailing specific outcomes. This is designed to dovetail into the District Performance Report and will provide a regular checkpoint on progress.

To support the introduction of the changes I have been visiting districts and meeting with development staff and Board members over the last 8 months.

Two things strike me:

- Everyone is working really hard... in some cases too hard
- Although similar no two SDO roles are the same.

This has reinforced to me the need for the new reporting structure.

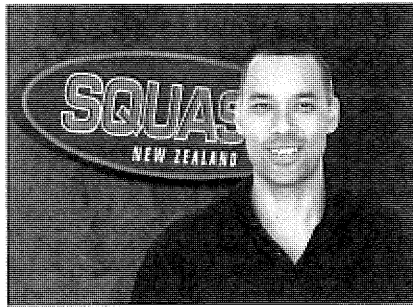
Properly designed and having received input from the SDO network the new reports should provide focus on growth and identify targeted and appropriate workloads. This can only be a good thing for the Districts and the game.

The plan is to introduce the updated reports for the new SNZ financial year. The Districts will set targets in conjunction with SNZ and will become much more the master of their own destiny.

This is a positive step and has been welcomed almost universally by Boards and SDO's

GARRY WOOD

District Development Manager



Coach Development Report

District Visits

I think it is great that we as a National Body can send someone around the country and spend time with our Coaching Network. Squash New Zealand has not had the resources to be able to support the Districts in this way and with my appointment as Coach Development Manager I have been able to travel to Districts and have first hand contact with our Coaches in their own districts.

By visiting the districts I have been able to find out what kind of Coaching Network and programmes are being undertaken. Whilst some Districts were doing well, others were very under resourced and functioning only because of the many volunteers trying to keep the programmes going. I have been able to help the Districts put in place some solid structures and programmes. During my time in the District I have also been in a position to support and help the upskilling of current Coaches. With the Districts now having the programmes up and running with good people co-ordinating them, during my next phase of visits I will be looking to assist with the direction and delivery of the Squash New Zealand Coaching Programme. This will ensure all Coaches are being well supported and there are development opportunities in place for them to ensure their retention.

District Coach

The District Coach position has now become a vital position in the District and with the support of the Squash Development Officer we are able to set up and deliver strong Coaching programmes. During the year I have developed a comprehensive generic job description for a District Coach position and Districts will be able to use this when looking to employ a District Coach and modify it for their particular area. This I am sure will attract the right person for the position. The importance of this position and the benefits it creates cannot be understated. Districts that have employed fulltime District Coaches have seen a huge improvement in the running, organisation and skill level of their programmes. If the Districts do not choose to employ full time District Coaches nothing will change and they will always be reliant on the many volunteers to assist in driving our sport.

Level 1 Tutors

We now have four accredited National Level One Tutors.

This is an increase of one from last year and we are in the process of appointing another two tutors to cover the upper North Island region, and the lower part of the North Island and the top of the South.

These tutors will have an annual meeting to update and review the course curriculum and make any alterations necessary. At this meeting the delivery of the course will be discussed to ensure consistency throughout all Districts. This is an area I feel that we can create opportunities for professional development of our qualified key Coaches.

Level 1 Coaching Database

During the year the Level One database has been updated and we are now in a better position to assess our District Coaching Network. As a result we are now able to ascertain those Coaches in the database that are still actively coaching. Our next step for us is to keep in contact with these people and support them by way of workshops, resources, etc.

Increase in Accredited Coaches

While reviewing the Level One database at the beginning of the year I was amazed with the number of people that had attended our Level One courses - around 150 on average every year. On examination of these numbers it was found that only 15% completed their final assessments. This small percentage was quite disappointing after all the work over the years that had been carried out in setting up a great Coaching Course that people enjoyed, got them involved but we failed to follow up and support them which inevitably was the major reason for so many Coaches losing interest or failing to follow on to accreditation.

A great deal of good work and support from the Districts over the past few months has been made and we have now contacted our Coaches by telephone, e-mail and sent out support information, and we have managed to encourage many former Coaches back into our programmes and they have now gained their Level One accreditation. Final assessment numbers have gradually improved over the year and the percentage is now around 35%. This has been a huge improvement but we still have a long way to go.

Coaching Meets

During the year we have held three National Coaching camps in Auckland. In December and June we had High



Womens C Grade National teams events winner: Rotorua Waikite Squash Club. Left to right: Wai Puketapu, Crystyl Irving, Marcella Morrison, Paige Inia-McGarvey, Christel Peri, Amiria Tomoana and Marilyn Inia-McGarvey



Waikato's Jenny Bell, New Zealand Junior Coach of the Year.

Performance and District Coaches Camps, with the main Coaching Conference in February.

For the February camp invitations to attend were extended to five Coaches per District and we had 56 Coaches from all over the country in attendance, about 12 up from last year. The Conference was run over three days with 16 to 18 group sessions covering topics like pressure feeding, technique, solo practicing, routines and developing certain shots. Off court sessions covered conditioning, vark, nutrition, life skills, video analysis, match analysis and many more. In partnership with the Academy of Sport we see these clinics as our key area for Coach Education. Following attendance at these camps the next step is for the Coaches to go back to their Districts and run their own Coaches workshops whereby filtering this information through their own Coaching Network.

The past year has been a great learning experience and I would like to thank the many Coaches, development officers and other support staff for their input and I look forward to working with you all again in the coming year.

GLEN WILSON

Coach Development Manager



2005 Season Results

NEW ZEALAND INTERNATIONAL SERIES

EVENT 1: SOUTH ISLAND CHAMPS – CHRISTCHURCH, 14 - 17 APRIL PSA/WISPA

Final

Stewart Boswell (Aus)	beat	Kashif Shuja (Remuera)	3/0
Sarah Cook (Sumner)	beat	Jaclyn Hawkes (Otago)	3/2

EVENT 2: SOUTH ISLAND CLASSIC – INVERCARGILL, 21-24 APRIL PSA/WISPA

Final

Stewart Boswell (Aust)	beat	Kashif Shuja (Remuera)	3/0
Dianne Desira (Aust)	beat	Tricia Chuah (Mas)	3/2

EVENT 3: TARANAKI OPEN – KAWAROA PARK, 28 APRIL - 1 MAY WISPA

Final

Tamsyn Leevey (Wainuiomata)	beat	Louise Crome (Remuera)	3/0
-----------------------------	------	------------------------	-----

EVENT 4: NORTH ISLAND/WAIKATO CHAMPS – HAMILTON, 28 - 31 JULY PSA

Final

Laurence Delasaux (UK)	beat	Scott Arnold (Aust)	3/1
Angie Toal (Hamilton)	beat	Rachel McLeod (North Shore)	3/0

EVENT 5: AUCKLAND OPEN – REMUERA, 4-7 AUGUST PSA

Final

Simon Carruthers (Aust)	beat	Callum O'Brien (Remuera)	3/0
Shelley Kitchen (Herne Bay)	beat	Jaclyn Hawkes (Otago)	3/0

EVENT 6: BARFOOT & THOMPSON – ROYAL OAK, 11-14 AUGUST PSA

Final

Simon Carruthers (Aust)	beat	Chris Ryder (UK)	3/0
Shelley Kitchen (Herne Bay)	beat	Louise Crome (Remuera)	3/0

NATIONAL CHAMPIONSHIPS – AUCKLAND, 2 - 4 SEPTEMBER

Final

Kashif Shuja (Remuera)	beat	Callum O'Brien (Remuera)	3/1
Shelley Kitchen (Herne Bay)	beat	Louise Crome (Remuera)	3/1

Most Improved Male	Martin Knight (Tawa)	Vogel Rosebowl
Most Improved Female	Jaclyn Hawkes (Otago)	Aust. Womens Plate
Services to Refereeing	Phil Morgan (Burnside)	Derek Cook Memorial Cup
Coach of the Year	Danny McQueen (Geysers City)	
Junior Coach of the Year	Jenny Bell (Cambridge)	
Team Coach of the Year	Shannon Patangata (Edgecumbe)	

SENIOR INTER-DISTRICT TEAMS EVENT – AUCKLAND, 5-6 SEPTEMBER
Men

1. Auckland
2. Central
3. Wellington
4. Canterbury
5. Waikato
6. Southland
7. Bay of Plenty
8. Northland
9. Eastern

Women

1. Auckland
 2. Bay of Plenty
 3. Central
 4. Wellington
 5. Otago
 6. Waikato
 7. Canterbury
 8. Southland
-

NEW ZEALAND JUNIOR OPEN – PANMURE, 14-17 APRIL
Final

Josh Thom (Franklin)	beat	Chris McEldowney (Okato)	3/2
Joelle King (Hamilton)	beat	Kerry Wickett (Papakura)	3/1

SOUTH ISLAND JUNIOR AGE GROUPS – TIMARU, 10-12 JULY
Under 19 Final

Patrick Mulvihill (Timaru)	beat	Adam Odering (Christchurch Football)	3/0
Maria Smith (Christchurch Football)	beat	Carla Sincock (Otago)	3/0

Under 17 Final

Joel Sugrue (Christchurch Football)	beat	Matiu Te Kani-McQueen (Geyser City)	3/1
Alana Sincock (Otago)	beat	Emma Sim (Christchurch Football)	3/0

Under 15 Final

Edward Dromgool (Burnside)	beat	Michael Brocks (Squash City)	3/1
Moana McLelland (Riverton)	beat	Crystal Tahata (Manurewa)	3/2

Under 13

Lance Beddoes (Henderson)	beat	Jarrold Beaumont (Richmond)	3/0
Ella Dromgool (Burnside)	beat	Megan Craig (Marlborough)	3/0

Under 11

Jonathon Barnett (Mitchell Park)	beat	Aaron McLelland (Riverton)	3/0
Rebecca Barnett (Mitchell Park)	beat	Abbie Palmer (Mangakahia)	3/0

HEAD NORTH ISLAND AGE GROUPS – HENDERSON, 15-17 JULY
Under 19 Final

Chris McEldowney (Okato)	beat	Josh Thom (Panmure)	3/1
Te Waimatao Hope (Kawerau)	beat	Holly Donnelly (Gisborne HSOB)	3/0

Under 17 Final

Evan Williams (Tawa)	beat	Keegan Burkhart (Collegians)	3/0
Maggie Marshall (Tasmania)	beat	Sarah Gilmore (Thorndon)	3/0

Under 15 Final

Byron Peehi-Floyd (Taihape)	beat	Edward Dromgool (Burnside)	3/2
Paige Benioni (Panmure)	beat	Lana Harrison (Remuera)	3/1

Under 13 Final

Liam O'Shaughnessy (Hawkes Bay)	beat	Lance Beddoes (Henderson)	3/2
Ella Dromgool (Burnside)	beat	Renei Kawe-Small (Squash City)	3/1

Under 11 Final

Zac Millar (Kapiti)	beat	Jonathan Barnett (Mitchell Park)	3/1
Rebecca Barnett (Mitchell Park)	beat	Abbie Palmer (Mangakahia)	3/0



NZ NATIONAL AGE GROUPS – HAMILTON, 30 SEPTEMBER - 3 OCTOBER
Under 19 Final

Chris McEldowney (Okato)	beat	Tini Moeke (Whakatane)	3/1
Joelle King (Hamilton)	beat	Jackie Laurenson (Ohakune)	3/1

Under 17 Final

Evan Williams (Tawa)	beat	Keegan Burkhart (Collegians)	3/0
Amanda Cranston (Ohakune)	beat	Aliesha Watene (Whakatane)	3/0

Under 15 Final

Lui Syder (Eden Epsom)	beat	Taylor Horton (Franklin)	3/0
Paige Benioni (Panmure)	beat	Lana Harrison (Remuera)	3/1

Under 13 Final

Todd Redman (Hawkes Bay)	beat	Lance Beddoes (Henderson)	3/2
Ella Dromgool (Burnside)	beat	Debbie Mauheni (Surf City)	3/1

Under 11 Final

Zac Millar (Kapiti)	beat	Scott Darroch (Putaruru)	3/0
Abbie Palmer (Mangakahia)	beat	Lakeesha Rarere (Hastings)	3/0

Most Improved Junior Male	C McEldowney (Okato)	Junior Management Trophy
Most Improved Junior Female	A Cranston (Ohakune)	Junior Management Trophy
Best District Overall	Central	Gifford Trophy

JUNIOR INTER-DISTRICT TEAMS EVENT – HAMILTON, 4-6 OCTOBER**Boys**

- Central
- Auckland
- Waikato
- Wellington
- Northland
- Canterbury
- Southland
- Midlands
- Eastern
- Bay of Plenty

Girls

- Central
 - Auckland
 - Wellington
 - Waikato
 - Bay of Plenty
 - Otago
 - Northland
 - Southland
-

NZ SECONDARY SCHOOLS CHAMPIONSHIPS – BAY OF PLENTY, 12-14 AUGUST**Finals**

Auckland Grammar Boys	beat	Palmerston North Boys High	- Runner up
Epsom Girls Grammar	beat	Rotorua Girls High	- Runner up

GRADED TEAMS EVENT FINALS

Cousins Shield - Thorndon	beat	Remuera	Venue
Mitchell Cup - Remuera	beat	Wainuiomata	Taupo

Men

B Grade	Remuera
C Grade	North Palmerston
D Grade	Eden Epsom
E Grade	Hawkes Bay SC
F Grade	North Palmerston

Women

Remuera	Remuera
Rotorua-Waikite	Tauranga
Surf City	Timaru
Gisborne HSOB	Christchurch Football
Hawkes Bay SC	Ohakune

MASTERS NATIONAL CHAMPIONSHIPS – SQUASH PALMERSTON NORTH, 21-24 OCTOBER

35 – 39

Mike McSherry (Palmerston North)	beat	Willie Bicknell (Thorndon)
Lisa Cowlard (Red Beach)	beat	Angie Toal (Hamilton)

40 – 44

Danny McQueen (Geyser City)	beat	Gary Duberly (Browns Bay)
Kathryn Austin (Whakatane)	beat	Sharyn Flynn (Havelock North)

45- 49

Charlie Mayhew (Christchurch)	beat	Brian Barnett (Browns Bay)
Cheryl Te Kani-McQueen (Geyser City)	beat	Kay Newman (Hamilton)

50 – 54

Wayne Seebeck (Christchurch)	beat	Mike Tombleson (Taupo)
Freda Walker (Christchurch Football)	beat	Francy Stephenson (North Shore)

55 – 59

Tony Naughton (Thorndon)	beat	Steve Kardos (Whakatane)
Kaye Jackson (Warkworth)	beat	Claire Horton (Te Puke)

60 – 64

Richard Purser (Remuera)	beat	Ray Foster (Wanganui)
Judy Cooper (Lugton Park)	beat	Patsy Fleming (Remuera)

65 – 69

Eddy Conder (Titirangi)

70 plus

Trevor Coulter (Frankton)
beat Maurice Peters (Remuera)

**MASTERS INTER-DISTRICT TEAMS EVENT
– SQUASH PALMERSTON NORTH, 25-27 OCTOBER**

1. Auckland
2. Bay of Plenty
3. Waikato
4. Canterbury
5. Wellington
6. Central
7. Otago



New Zealand Masters Inter-districts Teams winner - Auckland.

TRANS TASMAN MASTERS TESTS – NSW, 2-10 SEPTEMBER 2005

1st Test – Thornleigh Squash Centre, Sydney 2 September NZ 5 AUSTRALIA 7

35+	Mike McSherry	lost to	Paul Bushel	2/3
	Judith Casbolt	beat	Kylee Hammett	3/1
40+	Mark Gribben	lost to	Dale Robbins	2/3
	Kay Newman	beat	Sue Williams	3/1
45+	Charlie Mayhew	lost to	Tom Spark	0/3
	Sandra Egan	beat	Mary McMahan	3/0
50+	Wayne Seebeck	lost to	Michael Brown	1/3
	Freda Walker	lost to	Gaye Mitchell	0/3
55+	Steve Kardos	lost to	Brian Cook	0/3
	Kaye Jackson	beat	Robyn Prentice	3/0
60+	Ray Foster	lost to	Mike McDonald	2/3
	Patsy Fleming	beat	Robyn Bamberry	3/0



New Zealand Junior Womens Champion, Joelle King.



The successful Remuera Womens Mitchell Cup team. (From left); Louise Crome, Tanya Laurence, Jackie Hawkes, Jane Fox, Sally Hawkes and Amy Alison.



2005 New Zealand Masters Team to Australia.

Back row; Judy Cooper (Manager), Wayne Seebeck, Mike McSherry, Mark Gribben, Charlie Maybaw, Ray Foster, Steve Kardos.

Front row; Kay Newman, Patsy Fleming, Kaye Jackson, Sandra Egan, Freda Walker, Judith Casbolt.

2nd Test – 4 in 1 Fitness Centre, Wyoming 4 September			NZ 7	AUSTRALIA 5
35+	Mike McSherry	lost to	Paul Bushel	2/3
	Judith Casbolt	beat	Kylee Hammett	3/0
40+	Mark Gribben	lost to	Warren Millar	1/3
	Kay Newman	beat	Sue Williams	3/1
45+	Charlie Mayhew	lost to	Tom Spark	1/3
	Sandra Egan	beat	Mary McMahan	3/0
50+	Wayne Seebeck	lost to	Michael Brown	2/3
	Freda Walker	beat	Gaye Mitchell	3/1
55+	Steve Kardos	beat	Brian Cook	3/2
	Kaye Jackson	beat	Robyn Prentice	3/0
60+	Ray Foster	lost to	Mike McDonald	2/3
	Patsy Fleming	beat	Robyn Bamberry	3/0

3rd Test – 4 in 1 Fitness Centre, Wyoming 10 September			NZ 6	AUSTRALIA 6
35+	Mike McSherry	lost to	Paul Bushel	0/3
	Judith Casbolt	beat	Kylee Hammett	3/0
40+	Mark Gribben	lost to	Warren Millar	0/3
	Kay Newman	lost to	Sue Williams	2/3
45+	Charlie Mayhew	lost to	Tom Spark	2/3
	Sandra Egan	beat	Sue Volzke	3/0
50+	Wayne Seebeck	beat	Michael Brown	3/2
	Freda Walker	lost to	Gaye Mitchell	1/3
55+	Steve Kardos	beat	Brian Cook	3/2
	Kaye Jackson	beat	Robyn Prentice	3/0
60+	Ray Foster	lost to	Mike McDonald	0/3
	Patsy Fleming	beat	Robyn Bamberry	3/2

WORLD DOUBLES, CHENNAI, INDIA, 13-17 DECEMBER 2004

Mixed Doubles

Pool Play

Shelley Kitchen/Glen Wilson	beat	Joshna Chinappa/ Saurav Ghosal (India)	3 - 1
Lara Petera/Callum O'Brien	beat	Angelique Clifton-Parks/Michael Tootill (RSA)	3 - 1
Lara Petera/Callum O'Brien	lost to	Rachael Grinham/David Palmer (Australia)	0 - 3

Quarter Finals

Shelley Kitchen/Glen Wilson	beat	Triciah Chua/ Azlan Iskandar (Mas)	3 - 0
Lara Petera/Callum O'Brien	lost to	Natalie Grinham/Dan Jenson (Australia)	2 - 3

Semi Final

Shelley Kitchen/Glen Wilson	beat	Natalie Grinham/Dan Jenson (Australia)	3 - 2
-----------------------------	------	--	-------

Final

Shelley Kitchen/Glen Wilson	lost to	Rachael Grinham/David Palmer (Australia)	0 - 3
-----------------------------	---------	--	-------

Women's Doubles

Pool Play

Shelley Kitchen/Tamsyn Leevey	beat	Kasey Brown/Melissa Martin (Australia)	3 - 1
Shelley Kitchen/Tamsyn Leevey	lost to	Natalie Grinham/Rachael Grinham (Australia)	0 - 3
Shelley Kitchen/Tamsyn Leevey	beat	Louisa Hall/Latasha Khan	3 - 1
Louise Crome/Lara Petera	beat	Nicol Tricia Chuah (MAS)	3 - 0



Louise Crome/Lara Petera	beat	Heidi Mather/Amelia Pittock (Australia)	3 - 1
Louise Crome/Lara Petera	beat	Angelique Clifton-Parks/Diana Argyll (RSA)	3 - 0
Semi Final			
Louise Crome/Lara Petera	beat	Shelley Kitchen/Tamsyn Leevey	3 - 1
Final			
Louise Crome/Lara Petera	lost to	Natalie Grinham/Rachael Grinham (Australia)	0 - 3

TRANS TASMAN JUNIOR GIRLS SERIES – 15-17 JUNE 2005

1st Test – Auckland 15 June		NZ 3	AUSTRALIA 2	
Jackie Laurenson		default		
Lana Harrison		lost to	Samantha Davies	3/2
Amanda Cranston		lost to	Jessica Gillett	3/0
Kerry Wickett		beat	Vanessa Pickerd	3/1
Joelle King		beat	Kasey Sinclair	3/0
2nd Test - Cambridge 16 June		NZ 3	AUSTRALIA 2	
Kerry Wickett		default		
Te Wai Hope		lost to	Samantha Davies	3/1
Amanda Cranston		lost to	Vanessa Pickerd	3/1
Jackie Laurenson		beat	Kasey Sinclair	0/0 – injury
Joelle King		beat	Jessica Gillett	3/1
3rd Test – Auckland 17 June		NZ 2	AUSTRALIA 3	
Amanda Cranston		default		
Jackie Laurenson		lost to	Samantha Davies	3/0
Te Wai Hope		lost to	Vanessa Pickerd	3/0
Kerry Wickett		lost to	Jessica Gillett	3/2
Joelle King		beat	Karen Morrissey	3/0

WORLD JUNIOR WOMEN'S CHAMPIONSHIPS, HERENTALS, BELGIUM – 21-31 JULY 2005

Individual Results

Joelle King	First Round	bye		
	Second Round	beat	Leonie Holt (England)	9/1 9/5 9/1
	Third Round	beat	Soraya Renai (France)	9/5 4/9 9/3 9/4
	Fourth Round	lost to	Sara Badr (Egypt)	9/3 9/2 9/6
Jackie Laurenson	First Round	lost to	Heba Ahmed (Egypt)	9/2 9/7 9/7
	Plate First Round	beat	Emi Takemoko (Japan)	3/0
	Second Round	beat	Alexandra Clark (Scotland)	3/0
	Third Round	lost to	Neha Kumar (Canada)	3/0
Kerry Wickett	First Round	beat	Zulhijjah Azan (Malaysia)	9/6 9/1 9/3
	Second Round	beat	Marjorie Fosse (France)	9/2 2/9 7/9 9/1 9/5
	Third Round	lost to	Joey Chan (Hong Kong)	9/5 9/4 9/0
Amanda Cranston	First Round	beat	Lisa Aitken (Scotland)	3/9 0/9 9/2 10/9 9/1
	Second Round	lost to	Ka Kei Chiu (HongKong)	9/2 9/0 9/3
	Classic Plate First Round	lost to	Pamela Chua (Singapore)	3/2

POOL PLAY

New Zealand 3 – Mexico 0

Kerry Wickett beat Ivonne Diaz Perez 10/2 9/2 9/2
 Jackie Laurenson beat Imelda Salazar 2/9 9/1 9/6 9/2
 Joelle King beat Sary Carmen Diaz 10/8 9/0 9/3

New Zealand 1 – England 2

Kerry Wickett lost to Fiona Moverley 5/9 9/5 9/3 9/1
 Amanda Cranston lost to Suzannah King 9/1 9/1 9/2
 Joelle King beat Rachel Wilmott 10/8 9/1 9/0

FINALS 1-12TH (ROUND 1)

New Zealand 2 – Wales 1

Joelle King beat Jessica Bevan 9/6 9/0 9/5
 Jackie Laurenson lost to Natalie Pritchard 5/9 6/9 2/9
 Kerry Wickett beat Gemma Davies 9/3 9/2 10/8

FINALS 1-8TH (QUARTER FINAL)

New Zealand 0 – Hong Kong 3

Kerry Wickett lost to Annie Au 9/0 9/2 9/1
 Amanda Cranston lost to Chiu Ka Kei 9/1 9/4 9/1
 Jackie Laurenson lost to Joey Chan 9/1 9/5

FINALS 5-8TH

New Zealand 1 – Malaysia 2

Joelle King lost to Sally Looy 9/5 8/10 9/1 1/9 6/9
 Kerry Wickett lost to Wee Wern Low 5/9 5/9 4/9
 Jackie Laurenson beat Nabilla Ariffin 9/6 9/5 best of 3

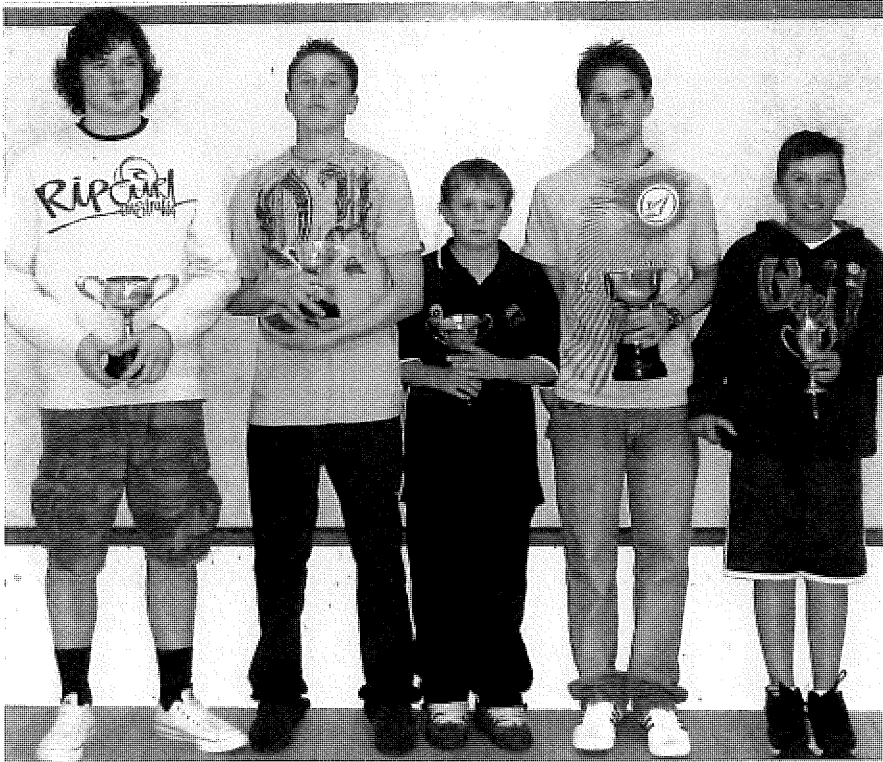
7-8TH PLAYOFF NEW ZEALAND FINISHED 7TH

New Zealand 3 – Australia 0

Joelle King beat Vanessa Pickerd 9/4 9/3 9/2
 Kerry Wickett beat Jessica Gillett 4/9 1/9 9/4 9/4 9/5
 Jackie Laurenson beat Samantha Davies Dead Rubber .



New Zealand Junior Age Group Champions. From left; Joelle King (U19), Amanada Cranston (U17), Ella Dromgool (U15), Abbie Palmer (U11) and Paige Benioni (U15).



New Zealand Age Group Champions. From left; Chris McElDowney (U19), Lui Syder (U15), Todd Redman (U13), Evan Williams (U17) and Zac Miller (U11).



New Zealand Masters Championships were a triumph for three families in the Individuals. Wayne Seebeck and partner Freda Walker in the 50 years divisions, husband and wife duo from Rotorua, Cheryl and Danny McQueen in the 45/50 years divisions and Richard Purser and his sister Judy Cooper were dominant in their respective 60 year age divisions.

Grading & Statistics Report

The Grading System is the major part of the National Club Member Register. At the end of September 2005 it contained 16,212 graded players (2004 - 16,067). In addition, the national club member register had a further 7,717 active leisure/casual club members giving a combined total of 23,929 "registered" club members (2004 - 23,149).

The total number is considered to be below real club membership numbers as indications are that some clubs are not providing Squash NZ with complete details of their "leisure" members - those players who have access to club facilities on a "casual" basis.

It cannot be stressed strongly enough that all clubs must ensure that all of their "members", regardless of membership category (or the manner in which the users of club courts access the facilities), are registered with the club, their district and Squash New Zealand. The maintenance of full and complete membership register of all people who use "club facilities" on a regular, even if casual basis, is of considerable benefit to the sport, at all levels.

1659 "J" grade players, (2004 - 1473; 2003 - 1059). At the end of the 2005 season, "J" grade players, comprised 10.2% of the total grading list and 49% of total graded junior players.

During the 2005 season, the operational policies of the previous season were maintained, the prime intention of which is to maintain a reasonably even spread of players across the B to F grades. Graded player numbers across all grades continue to show that generally the policy under which the grading system is been operated continues to have the desired positive effect on the number of player entries in A, B and C grade tournaments.

However it is still disappointing to see the continued drop in the number of teams entering the National Graded Club Teams event at a district level: 280 teams in 2005 - against 296 teams in 2004, 303 teams in 2003, 341 teams in 2002, and 366 in 2001.

The fall in team numbers appears to be related to the continued fall in the number of senior players, the increasing number of masters players and a reflection of the

Total Players by Grades (Men & Women combined).

Oct 05	%	Oct 04	Oct 03	Oct 02	Oct 01	Oct 00	Nov 99	Nov 98	Nov 97	Nov 96	Nov 95	
A1	25	.15%	31	28	26	28	26	26	26	29	25	24
A2	165	1.05%	159	175	171	179	171	172	191	163	148	131
B	2556	15.8%	2411	2453	2460	2413	2339	2379	2358	2276	2053	1779
C	3340	20.6%	3063	3261	3384	3423	3410	3498	3560	3719	3765	3829
D	2674	16.5%	2739	3035	3205	3466	3515	3755	4055	4396	4766	4989
E	4075	25.1%	4174	4269	4531	4776	4628	5117	5502	5863	6247	6282
F	1718	10.6%	2017	2279	2776	2990	2817	2535	2896	3054	2956	2677
"J's"	1659	10.2%	1473	1095								
	16,212		16,067	16,595	16,553	17,275	16,906	17,482	18,588	19,500	19,960	19,711

As is the case with most sports, the number of people participating in the sport of squash has a direct bearing on the ability of the sport to attract outside support and revenue by way of sponsorships and grants, from the various sources from which such funds are available.

The "J" grades were introduced at the beginning of the 2003 season to provide a competitive structure for the young / beginner juniors. At the end of 2005, there were

changing work/leisure lifestyle in New Zealand. However one must also ask if clubs and districts are promoting the event for what it really is - a interclub teams championship within each district, with the opportunity for the winning team to represent their club and district at a national championship. No other sport provides its "club" players of all grades with the opportunity of attending a national event and with a national title at stake!



Some of New Zealand's National Referees relaxing at the NZ Championships hosted by the North Shore Club.

Age-group Statistics for the past five years provide interesting figures:

	2005		2004		2003		2002		2001	
Seniors (19 to 34 years)	4397	27.2%	4616	29.0%	5,001	30.1%	5,515	33.3%	5,963	34.5%
Masters (35 and over)	8437	52.0%	8385	52.0%	8,773	52.8%	9,170	55.4%	9,430	54.6%
Juniors (Under 19)	3378	20.8%	3066	19.0%	2,821	17.0%	1,868	11.3%	1,882	10.9%
Totals	16,212		16,067		16,595		16,553		17,275	

Numerically, both the senior and masters numbers have fallen, while the junior numbers have shown an upward trend since 2002. Overall, grading list numbers are slightly up on 2004.

Increased junior numbers are no doubt attributable to both the work of the Squash Development Officers and the ability of clubs to offer new young junior players a competitive structure specifically aimed at the beginner level.

During the 2005 season we continued with the multi-function grading list "search" facility on the Squash NZ website, and continued twice monthly update/publication frequency on the 1st and 15th of each month.

The regular publication of the grading list on the website continues to highlight areas of concern, not the least of which is the "prompt collection of results". Possible improvements to this area of the grading system are being evaluated, particularly a viable means by which to

provide clubs and districts with the ability to replace a large proportion of the current "paper based" workload with a computer based application.

Hopefully we will be able to offer this during the 2006 season, however until such a facility is available, event organisers need to continue be mindful of the need to submit results as quickly as possible.

The Squash Grading System continues to be the backbone of competitive squash in New Zealand and its successful operation is due to the considerable level of volunteer time and effort by club and particularly district statisticians. Considerable thanks must be extended to them for their work which benefits individual players and the sport of squash as a whole.

STEVE SCOTT

Director - Gradings & Statistics

Refereeing Report

This year has been one of retention and little progress has been made in the area of increasing our number of qualified referees, it has however highlighted the need to change our way of doing things.

At a workshop held in Auckland prior to the senior nationals in September and facilitated by Glenda Hughes, reasons for decreasing numbers were identified. If we are to increase the number of national referees then change is essential. Funding is a major stumbling block so it is pleasing to see SPARC have created a scholarship for officials and with the Lion Foundation have identified refereeing as a key issue for sports and are working with them to assist in putting in place programmes to increase the strength of the refereeing component of the sport.

2005 has been busy on the tournament front with six PSA/WISPA tournaments as well as our own national tournaments. My thanks to all referees who so willingly made themselves available to attend these, the accessibility of international tournaments is critical to our national referees' development particularly with the World Junior Champs being held in NZ next July.

Planning for this prestigious tournament is well under way and it is hoped that all of our national referees will be in the position to attend. Tournament Director, Joss Urbahn has a training programme for markers currently running so a high calibre of Markers and Referees will be on hand.

Paul Sneyd attended the World Champs in Amsterdam last September in his bid to gain international refereeing status. This unfortunately is a long term process, with 15 international matches (of a set standard) per year required it is essential Paul gets as much experience off shore as possible, while the PSA tournaments here in New Zealand provide him with some matches more are needed to gain that international qualification. Planning is under way to ensure he gets to the World Championships in Pakistan this December.

2005 saw only four referees qualify, congratulations to Ian Taiaroa (Auckland) and Kay Newman (Waikato) on gaining their National qualification and to Nick Mita (Canterbury) and Ross Smith (Wellington) on gaining their District qualifications.

Congratulations to Phil Morgan (Christchurch) winner of the Derek Cook Memorial Trophy – Phil is very proactive in promoting refereeing in the Canterbury region, he did an outstanding job as Tournament Referee at the PSA/Auckland Open this year and is always a ready volunteer for any event at any time.

My sincere thanks go to all district conveners and district referees for your hard work. I believe the growth of referee numbers sits with the districts, the perception of refereeing has been identified as one of the reasons people are not putting their hand up to take on the role. 2006 will see workshops at the district level and it is hoped by taking the face of refereeing to the districts that the perception will change.

It is also one of the refereeing objectives to ensure that acknowledgement of referees is made at all tournaments, such a simple thing but a small way of positioning referees as having made a worthy contribution to the tournament.

Thank you to the Squash New Zealand office for all their hard work, in particular Vivienne Brumby who has had the unenviable task of arranging travel and accommodation for so many.

New Zealand Referees

National: Nichol Taylor, Peter Highsted, Sandra Tinkler, Doug Flint, Gary Hutchison, Paul Sneyd, Dave Conza, Jan McAra, Nigel Lloyd, Tim Cook, Chris Buckland, Ian Gardiner, Naeomi Beaumont, Paddy Martin, Ross Minehan, Phil Morgan, Dru Reid, Wayne Smith, Brett Watene, Ian Taiaroa, Kay Newman.

JAN MCARA

Director - Refereeing



Lion Foundation 2005 NZ Squash Club of the Year - Palmerston North Squash Club

In 2002 the Palmerston North Squash Club mission statement was "to be the best club sports club in the central North Island."

In 2005 the club can arguably lay claim to not only being the best sports club in the central North Island but also possibly one of the best squash clubs in this country.

This is an outstanding achievement for any organisation but even more noteworthy because this business is owned and managed by volunteers.

Their success is based on some basic principles –

- The club has sound financial systems and policies in place.
- They have a well balanced management team with the appropriate skills.
- They have a sound strategic and operational plan.
- They have a committed vision.
- And they have enthusiasm and passion to make it happen.

Underlying the strategic vision is a desire to grow the game. To achieve this goal the club has successfully employed over the last few years skilled and talented people to carry out the operational elements of their annual plan. This has been a key factor in their success and growth and also a tribute to the people involved.

The Squash club has successfully brokered a deal with local Bowls and Cosmopolitan clubs to form a new multi use combined entity. The partnership and combined assets will see the existing complex extended to house the three clubs along with the addition of three new ASB squash courts. This comes on top of the success of the new gym complex and an 80% increase in membership.

While these achievements are outstanding they are underpinned by some more fundamental activities that contribute to the overall success of the club.

The club has systematically developed and nurtured relationships with a wide spectrum of stakeholders. They have successfully cultivated commercial sponsorship partnerships with local and national organisations that continue to be very productive.

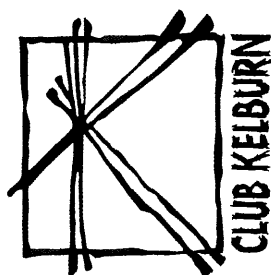
"Knowing the customer" has been a cornerstone of the strategic vision. To be more successful the club has established communication and IT systems that have improved the contact with club members and other stakeholders. Electronic newsletters, a website, swipe cards and electronic booking systems have contributed to a very successful club environment.

While the squash club is growing and is now part of a larger group it continues to be an outstanding performer on the competitive front. This year has been especially remarkable with the club doing very well in local and national competitions. The Palmerston North Boy's High School team, based at the club, was second in the NZ secondary schools championships, the club was third in the Cousins Shield, fourth in the Mitchell Cup, had four winners in the district graded teams elimination and two winners in the National teams finals. They have recently hosted the New Zealand Masters Championships and in 2006 will host the World Junior Men's Squash Championships.

Squash New Zealand and the Lion Foundation congratulate the Palmerston North Squash Club on the award for Club of the Year for 2005 and wish them every success for the year to come.



The successful new Gym complex opened at SquashGym Palmerston North this year.



Club Kelburn

ANOTHER SIX FIGURE YEAR

It is with great pleasure that we are able to announce another bumper year at Club Kelburn. Our end of year profit was well in excess of \$100,000, a figure I try to attain each year. We have been able to achieve this for quite a few years now, but none of us should take these results for granted. There is a lot of energy and enthusiasm that goes into each and every day by my staff, our supporters and myself to continually come up with such solid results year after year. We are continually working on our brand, on squash programmes, on the gym, on the retail business, on the facility, etc etc to keep reinventing ourselves to the consumer.

2005 - THE KEY AREAS

We have three key areas to our club- hireage of the 10 squash courts, selling gym memberships, and retail sales.

The squash court turnover was down a bit this year on last year, but to put this in context, we would have more squash played here in a normal week than anywhere in the country. Our 10 courts are busy most nights, and with a new Assistant Manager who is really helping to upgrade the squash programmes, I am confident of a sound 2006 year in this key area. John Murtagh, who is a B2 player and ex NZ under 20s cricket captain and Wellington rep, is fitting in extremely well, and we are working on some exciting initiatives for the next year.

The gym was just below last years results, but still showed good numbers. We have a particular niche in a very busy Wellington gym market. To give you an idea of the size of the market, there is a huge gym opening up in the city early next year, with the investment going into it being measured in the millions. I am confident that if we stick to our niche, and continue to try to be "the best part of our members' days", we will continue to have a good future in this side of the business. It is an area that we have to be continually upgrading, but the returns are there, and it is such a good fit with squash.

The really exciting area for me this year has been the retail area. We have had very significant growth. A lot of the growth has come through marketing done throughout NZ

using our website, personality driven poster campaigns, and building up our database through our squash tips- our Club K membership. The results have proven that we can compete nationwide, and we certainly are going to get even more aggressive in the next twelve months in this area. We have found a way to stand out from the crowd and get results in this area. The marketing, along with fantastic deals, our 60 day guarantee, and huge range, have made buying from Club K an easy choice for people all over the country.

My big challenge over the next little while is to find ways to achieve the same sort of cut through marketing-wise in the squash and gym side of the club as we have with the retail. Believe me - I am working on it!

GREAT PARTNERSHIPS

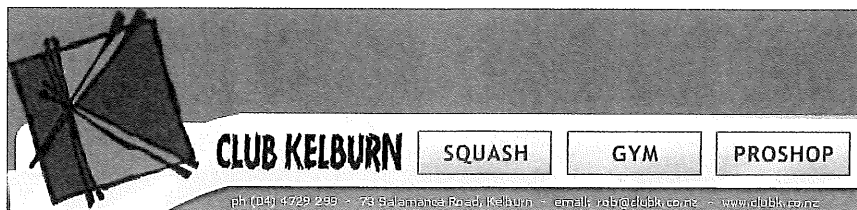
I have had some great support this year. My staff have been great, and thanks must go to Diarmuid, Kathryn, Phil, Nick, John, Camille, Dianne and Braddick. Most of my best staff members over the years have been people I have met through squash, and most have gone on to be good friends once they have moved on. Club K is run by a small team, with varying skills. It is getting the best mix of these skills out of these people, and getting them to actually have pride in the club, and their role in it, that makes the place special. I appreciate their efforts.

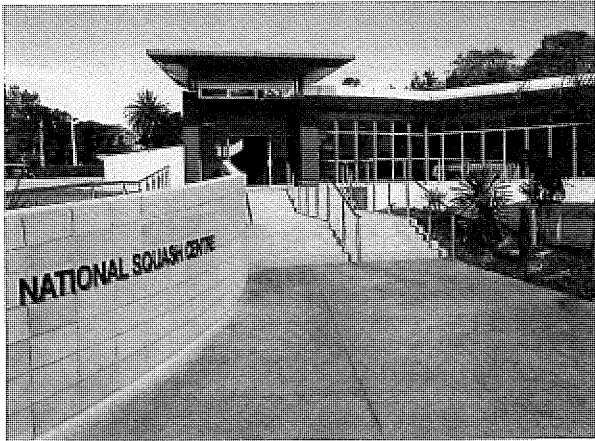
Thanks must go to my good friends at Fuji Xerox, whose help has been invaluable on the marketing side. Thanks also to Neven Barbour for his expertise and wisdom, and to all our suppliers. In particular we work very closely with Geoff Owen from Sporting Goods Specialists (Prince and Tecnifibre), Brent Chapman from Brittain Wynyard (Wilson and Asics), and Dean Eagar and Carol Owen from Head. The other wholesalers are very supportive as well.

I look forward to being able to bring you good news in twelve months time!

ROB WALKER

Manager Club Kelburn





National Squash Centre

The 2005 year continued to prove a challenging one for the Trust Board with the cost of running the Centre and Café being met by the business operation and providing a small surplus. Provision of management and oversight for the Centre is a continuing demand and on behalf of the Trust I would like to thank our Management Operators, Julia and Bryce Cottle and our Executive Director Neven Barbour for his continued input.

During the year several excellent Squash events were held including the Trans Tasman Junior Girls Test Series. All these events seemed to be enjoyed by everyone participating and the Centre certainly fulfils its function as a show piece for New Zealand Squash.

The ongoing financial challenges of operating the Centre profitably has lead the Board to conclude that a sale of the Café business is essential. Following a period of marketing

by Neven Barbour and our external advisor Susanne Baranyi of Kreem a purchaser has now been located. We are confident they will carry out a very successful operation of the Café business. The lease of the Café has been granted to them with the agreement of our partner Unitec. The proceeds of the sale will enable repayment of most of our outstanding debt and the future income generated should ensure the ongoing management, maintenance and upkeep of the Squash Centre. Bryce and Julie Cottle will continue with the Trust as Managers of the Squash operation and associated retail and hire activities.

The future for the Centre looks assured and it should remain an appropriate show piece for New Zealand Squash.

I would like to thank the members of my Board, for their continuing contribution and support during the year, being Andrew Codling, Margaret Cotter, Mike Greig, Susie Simcock, Mike Sumpter, and Executive Director Neven Barbour.

BRUCE DAVIDSON

Chairman



Staff having breakfast with New Zealand team members Louise Crome, Campbell Grayson and Martin Knight.

Masters Report

Squash is still very popular amongst Masters players. Total numbers are up slightly on last year. This year has been a very busy one for some of our top Masters players. Many have travelled as far as Canada in pursuit of the game they love. There was also a Test Series played in Australia.

National Masters Club Teams Event

This was held at Geyser City in early July. Gini Tuhakaraina did a wonderful job as Tournament Director, backed up by an enthusiastic team of 25 helpers. They put on a most enjoyable tournament, catering for the social side as well as the competitive. There was a record number of teams taking part - 8 in the Open Division, and 5 in Division 1. Geyser City had five teams playing, which shows their depth in Masters squash. There were three men and two women in a team, in age groups.

It is an achievement for so many Masters players to be able to compete at National level.

The Open final was very exciting. Kawarua Park won 3/2 to reverse last year's result. Mike Roberts, Peter Roughan, and Kaye Elliot were winners for KP, but Rhys Powell and Sharyn Flynn found the McQueens too strong.

Results

Open Division – 1st Kawarua Park, 2nd Geyser City 1, 3rd Hawkes Bay Lawn Tennis and Squash Club, 4th Palmerston North 1, 5th Lakes High 2.

Division 1 – 1st Geyser City 3, 2nd Lakes High 3, 3rd Geyser City 4, 4th Palmerston North 4, 5th Geyser City 5.

We look forward to returning to Hawkes Bay Lawn Tennis and Squash Club for this event next year.

World Masters Games.

These were in Edmonton in late July, and 12 of our squash masters competed. It was a fine effort to pick up two gold medals - Kaye Glenny won Gold in the 60+, and Tony Naughton won Gold in the 55+.

Kaye Jackson won Silver in the 55+, Judith Casbolt won silver in the 35+, and Trevor Colyer won Bronze in the 55+.

Other medals were picked up in the divisions and teams events. It reflects well on NZ Squash that so many of our players are flying our flag at World events.

Trans Tasman Test Series

In September we played a three Test Series against Australia in New South Wales.

We lost the 1st Test 7/5. The 5 matches we won were all women's. Two of our men lost in 5, so it was very close.

In the 2nd Test, we won the same 5 women's matches, but also picked up Freda Walker's match, and Steve Kardos's, to give us a 7/5 win. We were so pleased to fulfill our goal to keep the series alive until the next weekend, after the Individuals during the week.

The 3rd Test was a real thriller. We had a good start, with Wayne Seebeck picking up a match he hadn't won before.

Kaye Jackson, Judith Casbolt, Sandra Egan, and Patsy Fleming continued on their winning way. Freda lost in 4.

Mike McSherry, Mark Gribben and Ray Foster lost in 3, but there were 3 x 10/8's in these matches.

5/4 to NZ.

Steve played superbly to win in 5.

Charlie Mayhew fought valiantly, but went down in 5.

6/5 to NZ.

Kay Newman had a very good start and was up 2/0, but couldn't quite clinch it and lost in 5.

6 matches all, Australia 24 games, NZ 23 games.

The Test Series to Australia 2/1.

It was such an exciting contest. We had a very happy and motivated team.

Australian Masters Individual Championships

These were held between the 2nd and 3rd Tests.

Judith Casbolt won the 35+ Title, and Judy Cooper won the 60+ Title.

Wayne Seebeck, Sandra Egan and Patsy Fleming were runners-up in their age groups.

Judith Casbolt went through the Individuals and the Test Series undefeated – a fine effort.

New Zealand Championships

These took place in Palmerston North over Labour weekend. There were 160 entries from 55 clubs. Grant Smith, Jill Brown, Joss Urbhan and Adam Lyall did a



New Zealand's masters Rep and Over 35 Champion, Mike McSherry with Palmerston North Club Patron, Steve Mabarey.



Winners of Australian Masters Champs. From left; Judith Casbolt (35-39 age group) and Judy Cooper (60th age group).

great job to ensure the smooth and efficient running of the tournament. They had various social activities organised to keep players entertained. It is disappointing that there are not more participants outside those in the District Teams as this event caters for all levels of squash and is such an enjoyable way to spend Labour Weekend.

Individuals

There was a very high standard of squash.

The Men's 35+ final was a great match, between local boy, Mike McSherry, and Wellington's Willie Bicknell. McSherry won in 4 to the delight of the home crowd.

It was great to see couples Danny and Cheryl McQueen, and Wayne Seebeck and Freda Walker, taking their respective titles – also brother and sister, Richard Purser and Judy Cooper.

Inter District Teams Event

Seven districts entered teams in this event. We were very pleased that Otago were able to field a team this year, and despite coming 7th they are already planning for next year.

The final between Auckland and Bay of Plenty was very exciting, with Auckland winning 6/4 to retain the Cup. There was some wonderful squash to watch.

In the playoff for 3rd and 4th, Waikato beat Canterbury by 1 game on a count back.

Wellington beat Central Districts 6/4 to take 5th place.

Future Masters Events to look forward to:

July 2006 National Club Masters, Hawkes Bay Lawn Tennis and Squash Club.

July 2006 Oceania Masters, Norfolk Island.

September 2006, Australian Masters, Canberra.

October 2006, World Masters, Capetown.

October 2006, NZ Masters, Geysers City.

In Conclusion

I would like to thank my fellow Masters Selectors, Sandra Tinkler and Wayne Seebeck for all the help and support they have given me this year. We work together very well.

Squash NZ have been of great assistance, especially in the preparations for the Australian tour. It has been another very enjoyable year.

JUDY COOPER

Director – Masters



2006 World Junior Mens Squash Championships

As it has been well publicised, you will know Palmerston North and New Zealand are the hosts for the 14th World Junior Mens Championships, in July 17th to 28th next year.

Much planning and progress has been made over the last 18 months, and an overview to date includes;

- Championship naming sponsorship has been secured with PRINCE Sports International.
- The official Championship website has been launched as (www.2006worldjuniors.co.nz).
- A management team of 22 volunteers has been working on organisation of the event. A mixture of mainly Palmerston North Club members, with SquashNZ, Central Squash and regional Sports Trust representatives, who meet every month.
- Key appointments have been made: Grant Smith (Championship Chairperson), Joss Urbahn (Championship Referee) and Stu Baker (Championship Director), who also meet every Friday.
- It has been estimated the Championships will bring a total spend of between \$6 and \$7 million to the country and region. It has an event budget of over \$500,000.
- An event mascot is being produced which will accompany the championship and be used as a marketing tool for the event.
- An educational resource has been designed by educational specialists, teachers, squash personnel and media and will contain a variety of event based activities. This resource will be our main form of promotion into schools and is being driven by Central Squash. We are hoping this resource will be picked up by teachers and delivered straight away in term two 2006.
- Accommodation for competitors and officials has been secured.
- Championship venues have been secured and upgraded.
- A recruitment process for gathering over 200 volunteers has begun.

Funding and Sponsorship Update

The championship have a significant sponsorship component and over \$NZ200,000 has been secured to date, but we anticipate another \$NZ100,000 will be required.

Major partnerships to date include:

- PRINCE - Championship naming sponsor secured.
- KINGSGATE HOTEL - Accommodation sponsor secured.
- MASSEY UNIVERSITY - Use of the Institute of Rugby and other recreational facilities.
- SPARC - The governments agency for Sport and Recreation are financially supporting the event.
- TRUST SUPPORT - Gaming Trusts, NZ Community Trust and Unison Trust have committed with other applications to follow.
- PALMERSTON NORTH CITY COUNCIL - are financially supporting the event along with SQUASHNZ and CENTRAL SQUASH.

Over 147 sponsorship proposals have been distributed to local, regional, national and international businesses in November. Personal calls to each are being made to follow-up.

Playing Venues and Facilities

Headquarters for the championships and administrative host will be the Squash Gym Palmerston North club. The club is currently being redeveloped into New Zealand's largest, dedicated squash club with 8 glass back courts (including 3 new ASB courts). These, along with dedicated lounge areas, conference rooms, a state of the art gymnasium, massage area and pro-shop, will have seen in excess of \$1 million spent on the facilities in the last 2 years.

The opening and closing ceremonies, play for the quarter finals, semis and finals will be held in the international quality venue, Arena Manawatu Indoor Stadium. With a transportable all-glass court set up surrounded by 2000+ tiered seating, 6 corporate lounges, a courtside viewing, it will be a truly international setting.

Accommodation Venues

Part of any successful world event is the accommodation packages and Palmerston North is fortunate to have hotels in very close proximity to the club. The Kingsgate Hotel will be home to players, teams and management during their stay. Part of the international MCK Hotels chain, the Kingsgate is 2 minutes walk from SquashGym and is

ideal for sporting groups. A dedicated athletes' lounge will be established to cater for the players providing computers, DVDs and music stations.

Another important venue is Massey University's Institute of Rugby, a dedicated, high performance facility with superior accommodation. Along with practice courts, this will be home to the referees and tournament officials.

Championship Schedule and Nations Entered

Individuals - Qualifying 16 July with Opening Ceremony in the evening.

Individuals - Championships start proper 17 July with Finals 22 July.

Teams - Pools start 23 July with Team Final and Closing Ceremony 28 July.

As of November, 20 nations had confirmed for the championships. All 4 corners of the globe are to be represented including the Home countries plus teams from Europe, Africa, America, Japan & Asia and the Anzacs. Spain & Mexico have also shown interest but are yet to commit, while a surprise entry from Mongolia was received with interest. Unfortunately due to WSF rules, their entry cannot be accepted as they are yet to become a full WSF member.

Squash New Zealand delegates travelling to Brazil for November's WSF AGM hope to encourage nations not already entered to do so. Squash NZ Chairman, Gerard DeCourcy will give the world meeting a short presentation on planning and progress to date. Confirmed nations are Australia, Canada, Egypt, England, Finland, Germany, India, Ireland, Japan, Kuwait, Malaysia, Netherlands, New Zealand, Pakistan, Scotland, South Africa, Switzerland, USA, Wales & Zimbabwe.

An Event to Remember - Putting New Zealand Back on the Map

These championships will be huge for the SquashGym club, Palmerston North City and region but also for squash in New Zealand, giving us an international stage we have lacked in recent times. The Organising Committee plan to make the championships "a New Zealand cultural experience" and one to remember for participants and their supporters.



On a personal note I would like to thank the many companies, organisations and people who have supported this event to date. Our naming sponsor PRINCE, Kingsgate Hotel, Jim O'Grady from Squash NZ, Sport Manawatu and Central Squash. Not forgetting our hard working Organising Committee who have put in thousands of hours, led by Stu Baker and Joss Urbahn.

As stated earlier, a website has been established (www.2006worldjuniors.co.nz) and is updated regularly. This will be our main medium of communication and we will be releasing stories and developments as they occur.

At the time of writing we only have 243 days until the event. Roll on July 2006 - let the Championships begin!

GRANT SMITH

**Chairperson, Organising Committee
2006 World Junior Mens Squash Championships**



Audit Report

To the Readers of the financial report of New Zealand Squash Incorporated.

We have audited the financial statements on pages 39 - 41. The financial statements provides information about the past financial performance of New Zealand Squash Incorporated and its financial position as at 30th September 2005. This information is stated in accordance with the accounting policies as set out on pages 42 - 45.

NEW ZEALAND SQUASH INCORPORATED RESPONSIBILITIES

The Executive Council is responsible for the preparation of the financial statements which give a true and fair view of the financial position of New Zealand Squash Incorporated as at 30 September 2005 and of the results of its operations for the year ended 30 September 2005.

Public Sector Grants include funding received from Sport & Recreation New Zealand (SPARC).

The funding is subject to Investment Agreements, detailing acknowledged responsibilities and outcomes upon which the funding is dependant.

It is the responsibilities of the Executive Council to ensure that the obligations under the Investment Agreements are fulfilled.

AUDITOR'S RESPONSIBILITIES

It is our responsibility to express an independent opinion on the financial statements presented by the Executive Council and report our opinion to you.

The scope of our audit has not included specific testing to ensure the Investment Agreement outcomes have been achieved.

BASIS OF OPINION

An audit includes examining, on a test basis, evidence relevant to the amounts and disclosures in the financial report. It also includes assessing:

- The significant estimates and judgements made by the Executive Council in the preparation of the financial statements, and
- Whether the accounting policies are appropriate to New Zealand Squash Incorporated circumstances, consistently applied and adequately disclosed.

We conducted our audit in accordance with generally accepted auditing standards in New Zealand. We planned and performed our audit so as to obtain all the information and explanations which we considered necessary. We obtained sufficient evidence to give reasonable assurance that the financial statements are free from material misstatements, whether caused by fraud or error. In forming our opinion we also evaluated the overall adequacy of the presentation of the information in the financial statements.

Other than our capacity as auditors we have no other relationship with or interests in New Zealand Squash Incorporated.

QUALIFIED OPINION

As with other organisations of a similar nature, control over income prior to its being recorded is limited, and no practical audit procedures exist to determine the effect of this limited control.

We have obtained all other information and explanations we have required.

In our opinion:

Proper accounting records have been kept by the Executive Council as far as appears from our examination of those records; and

Except for any adjustments that might have been found necessary had we obtained the information described above, the financial statements on pages 39 - 41.

- comply with generally accepted accounting; and
- give a true and fair view of the financial position of New Zealand Squash as at 30 September 2005 and of the year ended on that date.

Our audit was completed on 11 November 2005, and our qualified opinion is expressed as at that date.



NEW ZEALAND SQUASH (INC)

Consolidated Statement of Financial Position

as at 30 September 2005

	Note	2005	2004
		\$	\$
Accumulated Funds			
Opening Balance as at 1 October		1,097,184	971,236
Surplus / (Deficit) for the Year		(24,463)	125,948
Total Accumulated Funds		<u>1,072,721</u>	<u>1,097,184</u>
Represented By:			
Current Assets			
Cash on Hand		370	370
Current Accounts		92,713	95,202
On Call Accounts		515,231	314,864
Term Deposits		131,680	123,458
Accounts Receivable		134,603	130,840
Stock on Hand	1	45,761	47,697
Payments in Advance	3	40,035	23,021
Total Current Assets		<u>960,393</u>	<u>735,452</u>
Investments			
Loans to National Squash Centre		293,073	293,073
Loans to Clubs		20,000	20,000
Total Investments	4	<u>313,073</u>	<u>313,073</u>
Non-current Assets	5	<u>338,275</u>	<u>362,270</u>
Total Assets		1,611,741	1,410,795
Current Liabilities			
Accounts Payable		208,748	185,115
GST Payable		2,720	2,540
Sundry Accruals	6	23,455	25,356
Income in Advance	7	245,483	71,293
Provision for Doubtful Debts	4	58,614	29,307
Total Current Liabilities		<u>539,020</u>	<u>313,611</u>
Total Liabilities		<u>539,020</u>	<u>313,611</u>
Net Assets		<u>1,072,721</u>	<u>1,097,184</u>

This statement must be read in conjunction with the Notes to the Financial Statements and the Audit Report on Page 38



NEW ZEALAND SQUASH (INC)

Consolidated Statement of Financial Performance

for the year ended 30 September 2005

	Note	2005	2004
		\$	\$
INCOME			
Levies & Subscriptions			
Affiliation Levies	8	412,422	423,023
Grading Levies		19,840	17,997
Associate Memberships		5,446	4,458
Total Levies & Subscriptions		<u>437,708</u>	<u>445,478</u>
Public Sector Grants			
SPARC		605,702	560,051
Total Public Sector Grants		<u>605,702</u>	<u>560,051</u>
ASB Bank Community Trust		0	30,300
Other Grants & Sponsorships		151,249	168,088
Total Grants & Sponsorships		<u>151,249</u>	<u>198,388</u>
Contracts For Service		0	8,300
Investment Income			
Club Kelburn	9	129,524	134,812
Squash Dynamics	10	(46)	(220)
Interest		19,106	10,950
Total Investment Income		<u>148,584</u>	<u>145,542</u>
Total Income		<u><u>1,343,243</u></u>	<u><u>1,357,759</u></u>

This statement must be read in conjunction with the Notes to the Financial Statements and the Audit Report on Page 38



NEW ZEALAND SQUASH (INC)

Consolidated Statement of Financial Performance

for the year ended 30 September 2005

Note	2005	2004
	\$	\$
EXPENDITURE		
Management & Operations		
Governance	73,305	62,556
Salaries & Fees	223,646	218,464
Overheads	39,144	50,066
	<hr/>	<hr/>
Total Management & Operations	336,095	331,086
Special Projects	29,330	6,429
Promotion & Marketing	17,187	46,049
Regional Development	234,915	168,214
Education & Development	9,118	(611)
Gradings & Rankings	51,002	53,126
National Events	74,037	93,668
High Performance Programme	542,142	463,615
	<hr/>	<hr/>
Total Expenditure before Depreciation	1,293,826	1,161,576
Provision for Doubtful Debts	29,307	29,307
Depreciation	44,423	31,676
Loss on Disposal of Assets	150	9,252
	<hr/>	<hr/>
Total Expenditure Including Depreciation	1,367,706	1,231,811
Net Surplus / (Deficit) for the Year	<u>(24,463)</u>	<u>125,948</u>

This statement must be read in conjunction with the Notes to the Financial Statements and the Audit Report on Page 38



NEW ZEALAND SQUASH (INC)

Notes to the Financial Accounts

for the year ended 30 September 2005

I - ACCOUNTING POLICIES

Statement of Accounting Policies

Differential Reporting

New Zealand Squash (Inc) is the New Zealand national sporting organisation responsible for the control, advancement and regulation of the game of squash throughout New Zealand. New Zealand Squash (Inc) is incorporated under the Incorporated Societies Act 1908.

The Association qualifies for differential reporting as it is not publicly accountable and does not qualify as "large", as defined within the Institute of Chartered Accountants of New Zealand's framework for differential reporting. The entity has taken advantage of all the differential reporting exemptions available to it.

Measurement Base

The accounting principles recognised as appropriate for the measurement and reporting of earnings and financial position on an historical cost basis have been followed. Accrual accounting is used to match income and expenditure.

Specific Accounting Policies

The following specific accounting policies which materially affect the measurement of financial performance and of financial position have been applied:

Operating Leases

Operating lease payments, where the lessors effectively retain substantially all the risks and benefits of ownership of the leased items, are recognised in the determination of operating profit in equal instalments over the term of the lease (refer Note 11).

Stock

Stock has been valued at the lower of cost or net realisable value. Due allowance has been made for slow moving stock.

Goods & Services Tax

The financial statements have been prepared on a GST exclusive basis.

Fixed Assets

All fixed assets are recorded at cost less accumulated depreciation to date. Depreciation has been provided at the maximum rates permitted by the Income Tax Act 1994.

Investments

Investments are loans advanced to clubs for renovations and development and are stated at cost (refer Note 4).

Changes in Accounting Policies

There have been no changes in accounting policies. All policies have been applied on a basis consistent with those used in previous years.



2 - INVENTORY COMMITMENTS

No inventories are specifically and separately pledged as security for liabilities. Inventory is subject to retention of title clauses.

3 - PAYMENTS IN ADVANCE

	2005	2004
ACC Levy	1,084	900
Commonwealth Games (Mar 2006)	2,584	-
Computer Expenses	1,350	-
Insurance	9,938	10,006
Venue Hire	5,411	-
World Double's Tournament (Dec 2004)	-	7,585
World Mens (Dec 2006)	5,062	-
World Juniors (Jul 2006)	10,000	-
World Squash Meeting	4,606	4,530
Total Payments in Advance	40,035	23,021

4 - INVESTMENTS

Herne Bay Ponsonby Rackets Club (Inc)	\$20,000
Advancement Date :	12 June 1996
Terms :	Original Term Five Years increased to 8½ Years
Repayment Date :	Original Date of Repayment 12 June 2001 extended to 31 January 2006
Interest Rate :	10% per annum
Security :	The advance is covered by an "Instrument by way of Security" dated 7 August 1996
National Squash Centre Charitable Trust	\$293,073
Advancement Date :	31 October 2001
Terms :	Original Term Five Years increased to 9 Years
Repayment Date :	Original Date of Repayment 31 October 2006 extended to 31 October 2010
Interest Rate :	4.5% per annum
Security :	Unsecured

New Zealand Squash views the above loan of \$293,073 as a strategic investment in the long term future development of squash. The Board has extended the repayment date of this loan to October 2010.

No interest has been charged since the inception of the advance.

The sale of the café operation is being negotiated and will result in part of the loan owing to New Zealand Squash being repaid.

5 - FIXED ASSET & DEPRECIATION SCHEDULE

Description	Cost	Opening Book Value	Additions (Disposals)	Depreciation	Accumulated Depreciation	Closing Book Value
Trophies	500	500				500
Motor Vehicles	66,438	42,180		10,600	34,858	31,580
Plant, Equip & Fittings	251,725	86,354	(12,933)	22,786	157,975	80,817
Computer Software	11,876	1,981	8,981	3,448	13,343	7,514
Sports Equipment	224,554	70,385	11,068	23,873	160,072	75,550
Buildings	767,839	110,760	7,560	11,652	668,731	106,668
Leasehold Improvements	254,054	50,110	0	14,464	218,408	35,646
Total	1,576,986	362,270	14,676	86,823	1,253,387	338,275

6 - SUNDRY ACCRUALS

	2005	2004
Other	18,455	20,356
Warranties	5,000	5,000
Total Sundry Accruals	23,455	25,356

7 - INCOME IN ADVANCE

	2005	2004
SPARC	163,000	62,449
NZ Community Trust – Grant	70,000	-
Sports Foundation	12,393	
Lion Foundation – Grant	-	5,110
Affiliation & Grading Levies in Advance	90	3,734
Total Income in Advance	245,483	71,293

8 - LEVIES & SUBSCRIPTIONS

Affiliation levy income for the 2005 year was calculated on an SEM rate of \$26.00 plus GST.

9 - CLUB KELBURN

The following is a summarised Statement of Financial Performance for Club Kelburn for the year ended 30 September 2005:

	2005	2004
Income:		
Trading Profits	104,651	87,178
Court Fees	188,935	208,304
Gear Hire	12,663	14,104
Golf	-	1,076
Gym, Aerobics, Sauna & Sunbed	203,024	204,522
Sponsorship & Promotion	4,312	1,587
Interest Received	6,473	4,234
Other Income	8,745	1,433
Total Income	528,803	522,438



Less: Expenditure		
Bank Fees	3,948	3,669
Depreciation	42,398	42,921
Insurance	8,915	8,791
Management & Sundry	265,923	256,291
Power & Utilities	30,867	31,796
Rent	31,750	29,000
Repairs & Maintenance	15,478	15,158
Total Expenditure	399,279	387,626
Net Surplus	129,524	134,812

10 - SQUASH DYNAMICS

The following is a summarised Statement of Financial Performance for Squash Dynamics Limited for the year ended 30 September 2005 :

	2005	2004
Net Contract Income	-	-
Less: Expenses		
Bank Charges	46	220
Total Expenses	(46)	(220)
Net Operating Surplus / (Deficit)	(46)	(220)

Squash Dynamics is no longer trading, all funds have been transferred to NZ Squash and the bank accounts closed.

11 - CAPITAL & LEASE COMMITMENTS

Capital Commitments

There is consulting expenditure of \$19,393 contracted for at Balance Date.

Operating Lease Commitments

Lease commitments under non-cancellable operating leases:

	2005	2004
Current	10,260	10,260
Non-current	29,925	40,185
Total	40,185	50,445

The term of the operating lease is 60 months and expires 24 August 2009.

12 - CONTINGENT LIABILITIES

New Zealand Squash (Inc) had no contingent liabilities as at 30 September 2005.

Membership Returns 2005

Club	Senior Men	Senior Women	Junior Men	Junior Women	Total
NORTHLAND					
Bream Bay	13	1	2	1	17
Dargaville	28	20	12	5	65
Kaitaia			NO RETURN		
Kamo	36	34	26	8	104
Kerikeri	49	21	32	9	111
Manaia			NO RETURN		
Mangakahia	17	5	25	10	57
Maungaturoto	21	15	9	2	47
Mid Western	22	14	7	3	46
Southern (Te Kopuru)			NO RETURN		
Waipu			NO RETURN		
Wellsford	47	37	26	22	132
Whangarei	96	46	43	12	197
TOTAL	329	193	182	72	776
<hr/>					
AUCKLAND					
Auckland Squash Centre			NO RETURN		
Auckland University			NO RETURN		
Belmont Park	36	8	20	12	76
Browns Bay	198	93	184	113	588
Devonport	61	13	16	7	97
Eden Epsom	324	188	135	77	724
Ellerslie			NO RETURN		
Franklin	78	30	22	6	136
Grammar	51	12	8	0	71
Henderson	176	64	63	42	345
Herne Bay	197	66	40	10	313
Howick			NO RETURN		
Kumeu			NO RETURN		
Manurewa	56	34	15	11	116
Maramarua	18	13	0	0	31
North Shore	313	121	23	5	462
Panmure	152	64	36	16	268
Papakura	58	23	13	5	99
Red Beach	64	29	24	7	124
Remuera	521	244	230	145	1140
RNZAF	17	4	0	0	21
RNZ Navy			NO RETURN		
Royal Oak			NO RETURN		
Shepherds Park	15	4	0	1	20
Silverdale United	55	16	0	0	71
Te Kauwhata			NO RETURN		
Te Papapa	43	20	1	1	65
Titirangi			NO RETURN		
Waiuku	121	51	26	12	210
Warkworth	39	25	34	9	107
Weymouth	30	6	0	0	36
TOTAL	2623	1128	890	479	5120



Club	Senior Men	Senior Women	Junior Men	Junior Women	Total
WAIKATO					
Aria			NO RETURN		
Cambridge	98	48	80	39	265
Frankton	38	27	1	0	66
Hamilton OB	30	23	0	2	55
Hamilton			NO RETURN		
Huntly	19	28	6	8	61
Leamington	35	21	22	5	83
Lugton Park			NO RETURN		
Mercury Bay	16	18	0	2	36
Morrinsville	65	59	29	15	168
Ngaruawahia	19	11	3	3	36
Otorohanga	42	31	7	4	84
Paeroa	42	22	6	6	76
Ruakura	77	49	13	10	149
Taumarunui	48	30	25	10	113
Taupiri	16	11	0	0	27
Te Aroha	42	38	4	2	86
Te Awamutu	58	50	18	16	142
Te Kuiti	14	11	4	3	32
Te Pahu	12	10	0	0	22
Te Rapa	30	23	0	1	54
Thames	50	33	14	20	117
United Matamata	52	28	12	2	94
Waihi			NO RETURN		
Waikato Hospital			NO RETURN		
Waitomo			NO RETURN		
Whangamata	18	16	5	9	48
TOTAL	821	587	249	157	1814

BAY OF PLENTY

Edgecumbe	40	34	33	21	128
Galatea	26	20	3	1	50
Geyser City	64	31	22	11	128
Katikati	37	16	21	5	79
Kawerau	11	7	4	5	27
Lakes High	65	36	3	4	108
Marist	24	24	5	1	54
Mount Maunganui	103	68	9	6	186
Putaruru	30	27	16	12	85
Reporoa	27	20	11	9	67
Rotorua Waikite	21	14	3	3	41
Taneatua	37	39	3	2	81
Taupo	125	58	61	24	268
Tauranga	150	79	116	50	395
Te Puke	78	54	44	30	206
Tokoroa	56	51	15	7	129
Waikite Valley	29	15	6	10	60
Whakatane	100	70	28	16	214
TOTAL	1023	663	403	217	2306

Club	Senior Men	Senior Women	Junior Men	Junior Women	Total
EASTERN					
Gisborne HSOB	46	30	11	13	100
Hastings			NO RETURN		
Havelock North			NO RETURN		
Hawkes Bay LT	81	41	35	17	174
Hawkes Bay	73	43	18	6	140
Squash Surf City	79	40	16	25	160
Takapau	11	11	1	0	23
Waerenga-a-hika			NO RETURN		
Waikare	11	6	0	0	17
Waipukurau	13	10	4	1	28
TOTAL	314	181	85	62	642

CENTRAL					
Ashhurst Pohangina	27	16	10	4	57
Dannevirke	34	19	33	13	99
Eltham	33	8	2	0	43
Feilding	44	26	28	18	116
Foxton	20	10	2	1	33
Hawera	75	39	14	10	138
Inglewood	39	24	8	8	79
Kawaroa Park	153	64	38	19	274
Levin	44	25	37	9	115
Ohakea	15	5	0	0	20
Ohakune	36	31	19	11	97
Okato	42	30	39	18	129
Opunake	13	15	0	0	28
Patea	11	6	3	1	21
Puketoi	14	8	2	1	25
Rangitikei	49	20	17	6	92
River City (TCOB)	28	18	7	6	59
Squash Palmerston North	261	99	116	48	524
Stratford	38	19	3	0	60
Taihape	39	26	12	6	83
Tararua	36	30	20	15	101
Turangi			NO RETURN		
Waitara	33	22	7	4	66
Wanganui	118	55	14	6	193
TOTAL	1202	615	431	204	2452



Club	Senior Men	Senior Women	Junior Men	Junior Women	Total
WELLINGTON					
Celtic	23	15	5	4	47
Collegians	112	43	44	11	210
Fraser Park	50	25	12	7	94
Island Bay	51	36	18	12	117
Kapiti	63	37	28	12	140
Khandallah	100	47	34	10	191
Mana	84	28	33	3	148
Marlborough College	47	38	21	14	120
Marlborough	46	29	26	10	111
Martinborough			NO RETURN		
Masterton	49	27	23	13	112
Mitchell Park	152	35	46	7	240
Motueka	26	22	10	7	65
Nelson	110	25	25	5	165
Northern	36	8	7	6	57
Otaki			NO RETURN		
Red Star	35	15	10	10	70
Squash @ Upper Hutt	114	36	47	10	207
Takaka	17	11	3	3	34
Tawa	140	76	60	19	295
Thorndon Club			NO RETURN		
Waikanae	28	11	2	4	45
Waimea	71	29	42	18	160
Wainuiomata	52	20	16	10	98
Woodbourne	14	6	0	0	20
TOTAL	1420	619	512	195	2746

Club	Senior Men	Senior Women	Junior Men	Junior Women	Total
CANTERBURY					
Amberley	32	18	6	2	58
Burnside	123	63	41	19	246
Cashmere	28	7	0	0	35
Christchurch Football	96	49	38	16	199
Christchurch	126	68	6	2	200
Ellesmere	12	1	0	0	13
Greymouth	59	19	17	6	101
Hokitika	10	3	1	0	14
Hoon Hay	47	30	23	7	107
Kaiapoi	30	31	22	3	86
Kaikoura	40	35	13	9	97
Lincoln	21	17	2	1	41
Linwood	33	18	1	0	52
Lyttelton	8	0	0	0	8
Malvern			NO RETURN		
Mount Pleasant	39	19	17	4	79
Oxford	14	16	6	3	39
Rangiora	59	14	16	5	94
Riccarton	26	12	0	1	39
Richmond Wkmns Club	99	33	22	7	161
Squashways	11	0	0	0	11
Sumner	44	12	1	0	57
Westport	27	10	5	3	45
TOTAL	984	475	237	88	1782

MIDLANDS					
Ashburton	79	24	25	4	132
Excelsior	32	9	12	2	55
Kurow Rugby	25	8	7	4	44
Mackenzie Rugby	20	26	5	6	57
Oamaru	52	19	21	5	97
Timaru OB	24	12	1	0	37
Timaru	58	17	23	6	104
Waimate	23	16	7	2	48
TOTAL	313	131	101	29	574

Club	Senior Men	Senior Women	Junior Men	Junior Women	Total
OTAGO					
Alexandra	35	15	18	8	76
Clutha	21	15	10	3	49
Cromwell	34	25	4	2	65
Logan Park	64	41	5	4	114
Maniototo	25	16	2	3	46
North End	43	20	2	1	66
Omakau	24	10	7	2	43
Otago	60	25	27	8	120
Otago University	125	71	27	12	235
Pirates	53	20	11	8	92
Queenstown	41	23	18	5	87
Roxburgh & Districts	11	6	6	1	24
Southern	27	16	2	3	48
Sunnyvale	35	1	1	0	37
Taieri	125	64	25	10	224
Toko	25	14	4	2	45
Wanaka	55	19	8	1	83
TOTAL	803	401	177	73	1454

SOUTHLAND

Balfour	23	25	7	2	57
Central Southland	28	20	12	7	67
Clinton Community	43	42	26	16	127
Dipton SC	25	13	0	0	38
Fiordland	25	26	4	2	57
Gore Town & Country	31	26	1	4	62
Heriot	18	16	0	3	37
Makarewa	43	16	8	3	70
Mossburn	8	9	0	0	17
Nightcaps	13	3	4	0	20
Otautau	36	27	18	3	84
Riversdale	15	20	1	0	36
Riverton	20	10	14	6	50
Squash City Invercargill	86	36	32	8	162
Tapananui & Districts	24	22	8	5	59
Waiau	7	8	13	6	34
Waikaia	21	10	0	0	31
Waikaka	22	20	0	2	44
Wyndham	7	15	2	0	24
TOTAL	495	364	150	67	1076



PO Box 21 781, Henderson, Auckland

Telephone: 09 815 0970, Facsimile: 09 815 0971

Email: squashnz@squashnz.co.nz Website: www.squashnz.co.nz