



SQUASH NEW ZEALAND
ANNUAL REPORT 2000

SQUASH NEW ZEALAND ANNUAL REPORT 2000

Contents

Squash New Zealand Officials 1999 - 2000	2
Squash New Zealand Honours Board 1999 - 2000	3
Chairman's Review	5
Chief Executive's Report	6
High Performance	8
2000 Season Results	10
Grading and Statistics	16
Squash Dynamics	18
National Squash Centre Trust	19
Club of the Year - Squash Palmerston North	22
Club Kelburn	24
Masters	25
Junior - Youth	26
Audit Report	28
Consolidated Statement of Financial Position	29
Consolidated Statement of Financial Performance	30
Notes to the Financial Accounts	32
Membership Returns 2000	35

Squash New Zealand. PO Box 21 781, Henderson, Auckland.
Telephone: 64-9 836 2217. Facsimile: 64-9-836 0309
Email: squashnz@squashnz.co.nz Website: www.squashnz.co.nz

Squash New Zealand Officials 1999-2000

PATRON:

The Hon. Sir David Beattie

EXECUTIVE COUNCIL:

Dave Bassett [Chairman], Gerard De Courcy, Jan McAra, Jim O'Grady, Debra Rodgerson, John Sangster

PROGRAMME DIRECTORS:

Doubles: Butch Gifford, *Gradings & Statistics:* Steve Scott, *Junior / Youth:* Hank Scott,
Masters: Gower Dallimore, *National Events:* Alan Simpson, *Refereeing:* Joss Urbahn

SELECTORS:

Junior & Senior: Neil Lewis, Nigel Lloyd, Jenny Norton, Ross Titchmarsh (Convenor),
Masters: Gower Dallimore, Judy Cooper, Sandra Tinkler

NATIONAL STATISTICIANS:

Women: Vivienne Brumby, *Men:* Peter Singer

PLAYERS REPS:

Louise Crome, Willie Bicknell

NATIONAL OFFICE:

Chief Executive: David Knowles, *Administration Manager:* Vivienne Brumby,
High Performance Manager: Wayne Werder, *Receptionist:* Jan Lewis, *Contract Accountant:* Glen Mossman

HON. SOLICITOR:

Michael Sumpter

AUDITOR:

McGregor, Bailey & Co.

WINNING AUCKLAND JUNIOR INTERDISTRICT TEAMS -

Left to Right: James
Vincent, Kerry Tonie
(Mgr), Priscilla Wildsmith,
Emma Winstanley,
Campbell Grayson,
Raxanne Jackson, Anthony
McLeod, Mike Weston
(Mgr), Seated: Catherine
McLeod, Jared Canning,
Andrea Venczelak



Squash New Zealand Honours Board 1999-2000

PERSONALITY OF THE YEAR

Leilani Joyce

CLUB OF THE YEAR

Squash Palmerston North

MOST IMPROVED JUNIOR PLAYERS:

Female
Male

Te Waimatao Hope (Kawerau)
Jared Conning (Royal Oak)

MOST IMPROVED SENIOR PLAYERS:

Female
Male

Judith Casbolt (Christchurch)
Jared Conning (Royal Oak)

**DEREK COOKE MEMORIAL TROPHY
FOR REFEREEING**

Joss Urbahn

**SQUASH PLAYERS OF THE YEAR (Winners
of Grand Prix Series)**

Leilani Joyce/Lara Petera (first equal)
Wayne Werder

NEW ZEALAND NATIONAL MEN'S SQUASH CHAMPION

Paul Steel (Whakatane)

NEW ZEALAND NATIONAL WOMEN'S SQUASH CHAMPION

Sarah Cook (Christchurch)

NEW ZEALAND INTER-DISTRICT TEAMS CHAMPIONSHIP

Men
Women

Bay of Plenty
Canterbury

NEW ZEALAND JUNIOR MEN'S SQUASH CHAMPION

Jared Conning (Royal Oak)

NEW ZEALAND JUNIOR WOMEN'S SQUASH CHAMPION

Kylie Lindsay (Matamata)

NEW ZEALAND JUNIOR INTER-DISTRICT TEAMS CHAMPIONSHIP

Men
Women

Auckland
Auckland

NEW ZEALAND MASTERS CHAMPIONSHIP

35+	Men	Danny McQueen
	Women	Kathrine Austin
40+	Men	Geoff Davinport (Aust)
	Women	Kay Newman
45+	Men	Lawrence Skurr
	Women	Carol Chard
50+	Men	Trevor Colyer
	Women	Rem King (Aust)
55+	Men	Richard Purser
	Women	Jenny Webster
60+	Men	Don Preston
	Women	Jillian Roberts
65+	Men	Roy Savage
70+	Men	Maurice Peters



Right: Leilani Joyce, British Open Champion, 1999, 2000



Chairman's Review

I would like to break with tradition and leave the year's summary to our Chief Executive. Instead, I would like to take a wider view of where squash is at in New Zealand, and look at some of the more global influences that we can expect to impact on squash in the next 10-15 years.

Before doing so I want to say that David Knowles has produced another superlative result. He is fortunate, though it's more to do with good management than good luck, that he enjoys the goodwill of the squash community. He is able to work with a huge amount of support from staff and volunteers in the National Office and beyond out in the districts and clubs.

As Chairman of Squash New Zealand, I believe it is safe to say we have turned the ship around. I'm not sure we have as yet a tremendous amount of way on but we are pointed in the right direction. At the risk of mixing my metaphors, the foundations have been built but, like any platform, it seems a huge amount of effort with little to show for it.

By this I mean many of the problems at club level still exist. Many clubs teeter on the financial brink, facilities remain dated and front doors locked. I'm pleased to say that there are some very obvious exceptions where clubs have made dramatic changes, increasing their membership base and generating new revenue, but our recovery is a fragile one and we can't yet show real growth in numbers playing the game overall.

On the other side of the ledger we have a number of new facilities up and running - exemplars of the squash courts of the future. Work is expected to start on the UNITEC project in January to provide a new headquarters for the game. We have a world number one in Leilani and a great advertisement for squash. She is achieving a media profile we could never afford. The SquashPLUS magazine is attracting advertising and is a creditable link with players. Squash Week was a successful promotion and those clubs which participated saw renewed interest from old players and new players sign up. It's a campaign worth repeating.

What can we expect in the future?

A newspaper article by Hamish McRae of "The Independent" caught my eye recently. Its caption was, "Serve more or take a serving" and it highlighted a global trend we need to consider. The article started with a quotation from Bill Ford, the great-grandson of Henry Ford and current chairman of Ford Motor Company: "The day will come when the whole notion of ownership is antiquated. The whole notion of you owning a car won't be appealing; you will own access to mobility."

McRae goes on to say that this is now a common theme in most manufacturing businesses, that they should get out making things and in to providing services. "Most of us," he says, "want to get from A to B; the car just happens in many cases to be the cheapest and most convenient way of doing so. People want the use of a car, not the actual ownership."

Our own experience in squash in New Zealand shows that building, maintaining and owning squash facilities is an enormous burden on the sport. Clubs are struggling. Most of us, as individuals with busy lives, would rather play squash than try to maintain and run a facility. Our challenge is to find others who are better suited to do this and free ourselves up to again enjoy the game, which is where our real interest lies. The decision recently by the Marlborough Squash club to "cash up" its asset and take out a lease, giving it guaranteed access to brand new courts in a multi-sport leisure centre, may give us a glimpse of the future. The club survives but effectively rents space rather than owning it. Gone is the burden of asset management and squash people in Blenheim can now focus on playing, coaching and promoting the game. That's what I call a "sea change" in thinking about squash.

In new ventures of any kind there are key individuals who lead the way. I would like to recognise the work of Nic Davies (Howick Squash Club), Ray Harper (Stadium Southland), and Luke Van Velthooven (Marlborough Stadium Trust) who have had the personal commitment to see major

projects through to completion. Squash has benefited enormously as a result. I appreciate, too, the work of the trustees of the National Squash Centre Trust who, in the last few months, have leveraged more than \$1,000,000.00 of public money for the game of squash.

At a national level, too, perhaps, we should also think hard about what we do and why. Consider that our annual vote is around one million dollars, much of this ploughed into administering the game. Imagine if \$500,000 was instead channelled into promoting the game. What a difference that might make!

I would like to thank the Executive Councillors who have served with me this year. Their thoughtful stewardship has been invaluable. On the international scene, Susie Simcock has been recognised for her leadership winning the SRA

"Services to International Squash" award and being the first women ever elected to the prestigious General Association of International Sports Federations. And I would like to thank Sir David Beattie for his many years of service as our Patron.

To go back to my earlier analogy, yes, in New Zealand we have turned the ship around and we are heading in the right direction but maybe in a vessel that is not well suited to the conditions ahead. In continuing my seafaring theme, this next year will be as much to do with shipbuilding as forward motion. Squash is rich in talent and people but we require more crew and I'm sure the current successes will draw out the people we need. Success somehow has a way of attracting winners.

DAVE BASSETT
Chairman, Squash New Zealand



WINNER NATIONAL WOMEN'S D GRADE TEAMS - EDEN EPSOM D GRADE

Top (L to R): Janice Whitaker-Hall (supporter), Jasie Cederman, Holly Kitecty, Natalie Innes, Alex Barley, Karen Lancaster.

Bottom: Collette Armai (Coach), Yee Lin Leong, Helen Easton, Naria Perry (Manager)



Chief Executive's Report

Leilani Joyce is now ranked #1 in the world and has just won her second British Open title. She may complete the treble by winning the World Women's Open in England in November but, whether she does so or not, Leilani has made this her year, first, as an outstanding athlete and, second, as an accomplished spokesperson for squash. Her success has given squash people in New Zealand good cause to feel proud. And there are other good things happening ...

From a Squash New Zealand perspective, it has been a satisfying year. The financial result, a small deficit of \$4,575.00, absorbs the cost of the \$50,000.00 grant to the National Squash Centre Trust which, in turn, has attracted grants from the New Zealand Lottery Grants Board and the ASB Charitable Trust of \$175,000.00 and \$875,000.00 respectively. More on facilities later but in financial and management terms the National Association is in good shape.

At the National Office, Vivienne Brumby not only manages the details of "money in, money out" but also assists tournament organisers with advice & guidance, something many of them have written to say they really appreciate. Wayne Werder has steered the High Performance programme effectively, launching several new initiatives. It's not been an easy portfolio during a time when change is in the air. Doug Flint, in an unpaid capacity, has been an extremely useful "extra pair of hands" at the office.

Out in ten of the eleven districts, the Squash Development network has seen changes as Mark Devoy and Steve Dunbar left for "better things" at Casino Heights (USA) and the Wellington Rugby Union respectively. The loss of these key operators was offset by the arrival of Hiria Kayes, Ryan Wilson and Karen Read.

I mentioned earlier the significance of new facilities. The hi-tech ASB courts in Stadium Southland and the Marlborough Sport & Event Centre set new benchmarks in how squash can be re-positioned in the sport and leisure market. The Howick Squash Club is embarked on building new

courts and construction on the first stage of the National Squash Centre is expected to get underway in January. These projects are the first visible signs of a growing awareness that the presentation of squash is changing. It hasn't happened by accident. There has been effective work, often below the line, driven by Neven Barbour and Squash Dynamics and the capital investment in the future of the sport in just these four projects is substantial. And there will be more to come.

At District level, I have been impressed with the examples set by Central Squash and Squash Bay of Plenty in particular. Presidents Mark Muir and Grant Utteridge (and their management teams) have recognised that leadership is more than administration, it means being ambitious and refusing to be satisfied with the status quo. At club level, too, there have been examples of significant change and congratulations to Squash Palmerston North for winning The Lion Foundation "Club of the Year" award. The effort clubs have made to recruit junior players is especially pleasing.

For many clubs "Squash Week" was a successful promotion this year and reports from the Districts confirm that 1200 new members were signed up during or immediately after the campaign, injecting \$140,000 into clubs at a local level. However, membership declarations by clubs suggest that nearly as many players left the sport and it is a concern that paid-up membership is static at about 25,000.

In terms of High Performance, the current review suggests that all is not well at the premier end of the sport (and there are issues to be addressed) but it's worth remembering that there have been some valuable new initiatives during the year. The first intake in of the Prince Academy at UNITEC and the inaugural Bluebird Junior Series were both successful innovations, the Revelation Series proved popular with both Kiwi and overseas players, and the senior women's team may yet win an international title. The New Zealand Sports Foundation has "re-drawn the map" by establishing

three new regional High Performance Centres so that services and support can now be provided directly to carded players.

There are, as I've said, other areas of concern. Confusion over the distinction between "membership" and "participation" means that nationwide there are 25,000 registered members and an unknown number of participants. My own view is that all players are members, it's only a question of category. Clubs appear to interpret membership more narrowly. Whatever the definition, the fact is that the strategy to "grow the game" does not yet justify the financial investment made jointly by Squash New Zealand and the Districts. Put bluntly, the results achieved by Squash Development Officers in 2001 will determine whether the investment continues.

In the area of High Performance, a comprehensive consultation process is underway to identify a new way forward but it seems obvious that Coaching and Refereeing deserve more attention than they have had in the recent past. As an aside, I have been concerned this year by reports of player dissent and abuse of Referees.

As always, there are many people to thank. Sir David Beattie retires as Patron of Squash New Zealand after many years of service. Rob Walker has again produced an outstanding result at Club Kelburn and his infectious enthusiasm for "selling squash," means he is an asset to the sport. Programme Directors, Steve Scott, Joss Urbahn, Gower Dallimore, Hank Scott and Alan Simpson carry out important work as volunteers with a minimum of supervision.

I would also like to recognise the help of Ken Davidson and Libby Vernon (Leisure Corp Holdings) in launching the Prince sponsorship, and Kelly Tunnell at Sport Bay of Plenty for the financial support of the SDO position in the Bay. Bruce Davidson has accepted the responsibility of leading the National Squash Centre Trust - a big job in anyone's language - along with trustees Ken Rapson,

Dame Susan Devoy, Mike Sumpter, Mike Greig, Michael Barnett and Andrew Codling.

And the list goes on. Finally, I would like to acknowledge the support offered to me by squash people generally - it's something I appreciate - and by the Executive Council in particular. Though at times it's been difficult, and always busy, I am grateful for the spirit of co-operation. In itself, this willingness to work together is something we should never under-value, nor take for granted.

DAVID KNOWLES
CEO, Squash New Zealand



WINNER NATIONAL MEN'S F GRADE TEAMS - EDEN EPSOM F GRADE
Standing (L to R): Mark Sayes (Mgr), Sven Borley, Alexander Hicks, Simon Yock
Seated: Joshua McGruther, Justin Sayes, Nicholas Sayes



High Performance

At the conclusion of the Junior Men's World Champs and a worst-ever 19th placing, it was hard to get excited about the future prospects of squash in New Zealand. When our senior men, who were sent as development players to the World Champs in 1999 were beaten by club players from Hong Kong in 2000, it was time to ask questions. The recent results from the Olympic Games show that squash is not the only sport grasping for answers. Heads roll, coaches are blamed, players are called soft and the old days are glorified, but when the dust settles very few answers are available.

At another level, the Government Review of Sport is surveying all aspects of sport. The scope and the timeframe of this review is very challenging, but I guess it's an indication that the time for questioning is over, we need answers. Squash New Zealand has commissioned its own review with the aim of providing some sharper direction to the High Performance programme and getting New Zealand back on the international map.

Earlier this year I had an interesting weekend. My love of all sport saw me trying my luck at Badminton, followed by a Touch Football tournament, and topped off by watching a few Tennis matches. At the badminton hall I was amazed at the athleticism of the junior squad training next door. On the touch field I saw countless young, fit, athletic players, and the tennis tournament was no exception, youngsters who were keen and athletic.

On the following Monday it dawned on me what one of the major problems for squash is that we do not attract these "natural athletes" in large numbers. At the Junior Nationals held at the North Shore Squash Club, I did not see the same athleticism, nor the same basic skill level as I did in those three other sports. Are we missing the boat? No matter how good the system is for High Performance squash, we will struggle if we do not have the raw talent to work with. Squash is one of the most physically demanding sports, and yet the most physically talented youngsters are not playing it.

The strategic priority of Squash New Zealand over the last four years has been to 'grow the game'. However this focus may have been at the expense of High Performance and at a superficial level could be seen as undermining our proud international history. A deeper look into the game confirms for me that High Performance and the Development of the game itself can not be separated.

Squash has to be delivered in a way that is attractive, modern and easy to play so that young people will want to play our sport. The fact is young people will not play our game unless it is played in a busy environment where other young people congregate. When this happens, squash will have "first call" on these athletic, skilful youngsters that are currently participating in other codes.

I expect our own High Performance review to address issues such as coaching and player development and that we will have a new-look world-class programme in the near future. We have the knowledge, resources and people to feel confident that this will happen, what I am nervous about is whether we have the right youngsters to put through the programme. A year ago I thought I saw light at the end of the tunnel. A year later, I now realise that the tunnel is very long and the journey is by no means complete.

The 2000 Season

This year saw a number of new programs put in place. The Revelation Series, was taken to the next level to include three PSA/WISPA which attracted over 50 international entries. To complement the senior circuit, the Bluebird Junior Series was run for the first time. Thanks must go to both Bluebird and Dunlop for their generous support. The Trans-Tasman junior test series was played in the Waikato with Australia winning all three tests. Squads from South Africa and the Victorian Institute played a youth series against the Prince Academy squad and a New Zealand selection. It's something I hope will become a regular fixture on our calendar and expand



Members of the New Zealand PRINCE Academy together with Australia's Victorian Institute of Sport and South African Youth Teams

to include other countries.

The Prince Academy of Champions was a positive innovation this year. It has been refreshing to see a group of young squash players training day-in, day-out in a structured environment. The course looks set to go ahead in 2001 and the lessons learnt from 2000 should ensure the quality of the course is improved again. I'm grateful to Prince and UNITEC for their support of this venture. The National Squash Centre project is also an exciting prospect for the course where students will be able to train at a top-class facility on campus.

Leilani Joyce led the charge on the international scene with another tremendous season. She is now #1 in the WISPA rankings and has defended her British Open title. Sarah Cook successfully defended her national title at the New Zealand Championships. Shelley Kitchen has achieved a career-best WISPA ranking of # 22 and with Louise Crome and Lara Petera improving their rankings to 39 and 42 respectively, the future of women's squash looks healthy. The World Women's Championships in November offer some tantalising possibilities.

However, the men's scene is disappointing. The top few senior men struggled this year balancing work and study commitments and their squash has suffered. Although this is a totally individual choice, it is at times frustrating to see talent put on hold. On a brighter note, Jared Conning has led a group of younger males players who look set to make up the core of our circuit in the next few years. There is a healthy competitiveness amongst this group and the commitment and talent is also apparent.

The job of delivering a High Performance programme on a modest budget is always a challenge. In fact, it cannot be done without the help of passionate volunteers who are prepared to give up personal time for the good of the game. I would like to thank all these groups, in particular the team managers, national selectors, parents of juniors and all those people at club level who help to deliver the game. Without their support there couldn't be a programme.

I look forward to a productive season and a new direction in 2001.

WAYNE WERDER
High Performance Manager

2000 Season Results

LIGHT ICE WAIKATO OPEN – Hamilton 19-21 May

Final

Iain Higgins	(England)	beat	Stuart Cowie	(Scotland)	15/14 15/14 11/15 15/5
Carol Owens	(Australia)	beat	Leilani Joyce		9/5 9/3 9/1

LION FOUNDATION AUCKLAND OPEN – Henderson 19-21 May

Final

Stuart Cowie	(Scotland)	beat	Iain Higgins	(England)	15/14 15/8 10/15 9/15 15/8
Leilani Joyce		beat	Carol Owens	(Australia)	3/9 9/6 9/7 9/3

KENSINGTON TAVERN NORTH ISLAND OPEN – Whangarei 2-4 June

Final

Lee Jemmett	(England)	beat	Stuart Cowie	(Scotland)	15/5 14/15 15/9 11/15 15/13
Leilani Joyce		beat	Shelley Kitchen		9/1 9/6 9/3

GRAND HOTEL CENTRAL OPEN – Wanganui 14-16 July

Final

Adrian Grant	(England)	beat	Michael Robberds	(Aust)	15/12 13/15 15/11 15/7
Leilani Joyce		beat	Louise Crome		9/0 9/3 9/5

DB WELLINGTON OPEN – Mitchell Park 21-23 July

Final

Adrian Grant	(England)	beat	Liam Kenny	(Australia)	7/15 12/15 15/12 15/7 17/14
Leilani Joyce		beat	Shelley Kitchen		9/5 9/0 9/4

RUSSELY HOTEL SOUTH ISLAND OPEN – Burnside/Christchurch Football 28-30 July

Final

Liam Kenny	(Australia)	beat	Andrew Whipp	(England)	6/15 15/5 15/11 13/15 15/14
Leilani Joyce		beat	Shelley Kitchen		9/5 9/1 9/4

AMP NATIONAL CHAMPIONSHIPS – Whakatane 1-3 September

Final

Paul Steel		beat	Daniel Sharplin		9/2 3/9 9/1 9/7
Sarah Cook		beat	Lara Petera		9/7 9/1 9/7

REVELATION SERIES – Final Points

Men

1 Wayne Werder	(Panmure)	12225
2 Iain Higgins	(Browns Bay)	11650
3 George Crosby	(Ch.Foot.)	11550
4 Lee Jemmett	(Herne Bay)	10825
5 Phillip Buscke	(Hamilton)	9625
6 Nathan Sneyd	(Tawa)	9300
7 Allan Crome	(Remuera)	9250
8 Kent Darlington	(Palm Nth)	7700

Women

1=Leilani Joyce	(Hamilton)	13050
1=Lara Petera	(Herne Bay)	13050
3 Louise Crome	(Remuera)	12500
4 Shelley Kitchen	(Herne Bay)	11900
5 Judith Casbolt	(Sumner)	11600
6 Clare Cogan	(Henderson)	10800
7 Fiona Dean	(Remuera)	9400
8 Sarah Lovelock	(Panmure)	9050

SENIOR INTER-DISTRICT TEAMS EVENT – Whakatane 3-5 September

Men

1. Bay of Plenty
2. Canterbury
3. Waikato
4. Central
5. Auckland
6. Midlands
7. Wellington
8. Southland

Women

1. Canterbury
2. Auckland
3. Waikato
4. Central
5. Wellington
6. Bay of Plenty
7. Otago
8. Southland



NEW ZEALAND JUNIOR MEN'S TEAM - WORLD CHAMPIONSHIPS ITALY 2000
(L to R) Mark Devoy (Mgr), James Vincent, Callum O'Brien, Sam Atkins, Jared Conning.

N.Z. UNDER 21 CHAMPIONSHIP – Tawa 14-16 April

Final

George Crosby	(Ch.Football)	beat	Jared Conning	(Royal Oak)	3/0
Kylie Lindsay	(Matamata)	beat	Jaclyn Hawkes	(Remuera)	3/0

STIRLING SPORTS NORTH ISLAND AGE GROUPS – Kawaroa Park 7-9 April

Under 19 Final

Jared Conning	(Royal Oak)	beat	Callum O'Brien	(Hamilton)	3/0
Kylie Lindsay	(Matamata)	beat	Jaclyn Hawkes	(Remuera)	3/0

Under 17 Final

Josh Greenfield	(Rangitikei)	beat	Richard Notter	(Nth/Shore)	3/2
Dannielle Nant	(Tauranga)	beat	Catherine McLeod	(N/Shore)	3/2

Under 15 Final

Hayden Manson	(Nightcaps)	beat	Campbell Grayson	(Titirangi)	3/2
Rachel McLeod	(Nth Shore)	beat	Amy Allison	(Waipu)	3/0

Under 13

Reece Williams	(Kawaroa)	beat	Ryan Peters	(Hamilton)	3/2
Joelle King	(Leamington)	beat	Clare McCaul	(Maidstone)	3/2

Under 11

Evan Williams	(Tawa)	beat	Samuel Travis	(Collegians)	3/0
Amanda Cranston	(Ohakune)	beat	Talisa McEldowney	(Okato)	3/1

INVERCARGILL LICENSING TRUST SOUTH ISLAND AGE GROUPS – Squash City 1-2 July

Under 19 Final

Paul Tuffin	(Wanganui)	beat	James Jordan	(Burnside)	3/0
Kylie Lindsay	(Matamata)	beat	Natasha Fowles	(Tauranga)	3/0

Under 17 Final

Oliver Johnston	(Logan Park)	beat	Martin Knight	(Kapiti)	3/1
Hannah Clifford	(Otautau)	beat	Katie Douglas	(Burnside)	3/0

Under 15 Final

Hayden Manson	(Nightcaps)	beat	Chris McEldowney	(Okato)	3/2
Rachel McLeod	(Nth Shore)	beat	Katherine McDonald	(In'gill)	3/1



GEYSER CITY B GRADE - WINNER NATIONAL MEN'S B GRADE TEAMS

Back Row (L to R): Boyd Camera, Terry Shaw, Grant Utteridge. Front Row: Andrew Taylor, Mel Shaw, Brendon Morrison, Craig Morrison.

Under 13 Final

Paul Roberts	(Nightcaps)	beat	Adam Yates	(Amberley)	3/1
TeWaimatao Hope	(Kawerau)	beat	Clare McCaul	(Maidstone)	3/0

Under 11 Final

Brett Clark	(Ch.Football)	beat	Sam Baker	(Central)	3/0
Amanda Cranston	(Ohakune)	beat	Courtney Brown	(Otautau)	3/0

HEAD NATIONAL AGE GROUP CHAMPIONSHIPS – North Shore 22-28 September

Under 19 Final

Jared Conning	(Royal Oak)	beat	Callum O'Brien	(Hamilton)	3/0
Kylie Lindsay	(Matamata)	beat	Jaelyn Hawkes	(Remuera)	3/2

Under 17 Final

Shaun Sansom	(Kawaroa Pk)	beat	Josh Greenfield	(Rangitikei)	3/0
Catherine McLeod	(Nth Shore)	beat	Priscilla Wildsmith	(Browns Bay)	3/0

Under 15 Final

Campbell Grayson	(Titirangi)	beat	Chris McEldowney	(Okato)	3/0
Katherine McDonald	(In'gill)	beat	Rachel McLeod	(Nth Shore)	3/2

Under 13 Final

Ryan Peters	(Hamilton)	beat	Joshua Harrison	(Papakura)	3/0
Kerry Wickett	(Papakura)	beat	Sofie McClymont	(Waipu)	3/1

Under 11 Final

Connor Matson	(Mangakahia)	beat	Taylor Horton	(Papakura)	3/0
Amanda Cranston	(Ohakune)	beat	Abbey Beaumont	(Browns Bay)	3/0

JUNIOR INTER-DISTRICT TEAMS EVENT – North Shore 26-28 September

Boys

1. Auckland
2. Waikato
3. Central
4. Wellington
5. Bay of Plenty
6. Canterbury
7. Northland
8. Southland
9. Otago

Girls

1. Auckland
2. Bay of Plenty
3. Waikato
4. Wellington
5. Central
6. Southland
7. Northland
8. Canterbury

BLUEBIRD SERIES FINAL POINTS TABLE**Overall Champion**

1 Amanda Cranston	U11	Ohakune	13200
2 Hayden Manson	U15	Nightcaps	12600
3 Claire McCaul	U13	Maidstone	12000
4 John Waugh	U17	Te Aroha	11400
5 Brett Clark	U11	Ch/Ch. Football	11300

Under 19

1. J Jordan	(Burnside)	7300	1. C Gunn	(Richmond)	10850
2. S Slade	(Mt Pleasant)	6250	2. K Lindsay	(Matamata)	8800
3. G Small	(Hamilton)	5600	3. K Trott	(Ch.HSOB)	7400
4. P Tuffin	(Wanganui)	5450	4. N Fowles	(Tauranga)	5700
5. B Brownrigg	(Collegians)	5000	5. R Tansy	(Kapiti)	5050

Under 17

1. J Waugh	(Te Aroha)	11400	1. K Douglas	(Burnside)	10700
2. M Knight	(Kapiti)	10950	2. L Stockman	(Hamilton)	6800
2. K Atkinson	(Hokitika)	9250	3. J Leach	(Richmond)	5200
4. M Nicholl	(Putaruru)	9000	4. M Laurenson	(Ohakune)	4700
5. M Martin	(Tawa)	8200	5. S Lewis	(Mangakahia)	4450

Under 15

1. H Manson	(Nightcaps)	10800	1. R McLeod	(Nth Shore)	10700
2. H Tallott	(Kawaroa Pk)	10400	2. J Laurenson	(Ohakune)	7100
3. J Smith	(Hoon Hay)	8800	3. K McDonald	(Invercargill)	6200
4. N Cranston	(Ohakune)	7500	4. A Allison	(Waipu)	5900
5. J Hope	(Kawerau)	6800	5. C Sim	(Okato)	5600

Under 13

1. N Terry	(Henderson)	7450	1. C McCaul	(Maidstone)	10400
2. R Peters	(Hamilton)	6100	2. J King	(Leamington)	10200
3. J Wagstaff	(Te Puke)	5800	3. M Smith	(Ch.Football)	9950
4. R Williams	(Kawaroa Pk)	4400	4. T Hope	(Kawerau)	8200
5. A Yates	(Amberley)	3900	5. S McClymont	(Waipu)	7000

Under 11

1. B Clark	(Ch.Football)	9900	1. A Cranston	(Ohakune)	13200
2. S Martin	(Tawa)	7300	2. D Watene	(Whakatane)	6700
3. E Williams	(Tawa)	6600	3. A Watene	(Whakatane)	5900
4. T Horton	(Papakura)	5500	4. A Sincock	(Roxburgh)	5700
5. G Slape	(Tawa)	5150	5. S Laurenson	(Ohakune)	4850

NZ SECONDARY SCHOOLS CHAMPIONSHIPS – Hamilton 13 August**Finals**

Westlake Boys High	beat	Auckland Grammar	3/2
Westlake Girls High	beat	Gisborne Girls High	4/1

NZ GRADED TEAMS EVENT FINALS

Cousins Shield - Royal Oak	beat	Herne Bay	3/2
Mitchell Cup - Remuera	beat	Herne Bay	3/1

Men

B Grade	Geyser City
C Grade	Tauranga
D Grade	Kaitaia
E Grade	Te Puke
F Grade	Eden Epsom

Women

Tauranga
Gisborne
Eden Epsom
Mt Maunganui
Ashburton

NZ MASTERS CLUB TEAM EVENT – Hastings LT Club 20 August

Taupo	beat	Lugton Park	4/3
-------	------	-------------	-----

NZ MASTERS NATIONAL CHAMPIONSHIPS – Ashburton 20-23 October**35 – 39 Age Group**

Danny McQueen	beat	Warren Miller	9/0 9/3 9/7
Kathryn Austin	beat	Chris Cooper	(Australia) 8/10 9/2 7/9 10/8 9/6

40 - 44 Age Group

Geoff Davenport	(Australia)	beat	Paul Viggers	9/4 9/3 9/1
Kay Newman		beat	Sandra Egan	4/9 9/6 9/6 9/1

45- 49 Age Group

Laurence Skurr		beat	Neville Fyfe	9/4 7/9 9/3 10/9
Carol Chard		beat	Sue Volzke	(Australia) 9/4 9/2 9/4

50 - 54 Age Group

Trevor Colyer		beat	Brian Cook	(Australia) 10/8 9/4 10/9
Rem King	(Australia)	beat	Kaye Jackson	9/0 2/9 8/10 9/7 9/1

55 - 59 Age Group

Richard Purser		beat	Graham McDonald	9/7 7/9 9/5 9/7
Jenny Webster		beat	Judy Cooper	10/8 9/1 4/9 9/5

60 - 64 Age Group

Don Preston		beat	Bruce Bark	9/1 10/8 4/9 9/2
Jillian Roberts		beat	Margaret Doueal	(Australia) 9/2 9/2 9/6

65 - 69 Age Group

Roy Savage		beat	Eddie Delahunty	9/6 9/2 9/0
------------	--	------	-----------------	-------------

70 plus Age Group

Maurice Peters		beat	Bill Berry	9/7 7/9 9/6 9/2
----------------	--	------	------------	-----------------

MASTERS INTER-DISTRICT TEAMS EVENT - Ashburton 24-26 October

- | | |
|-----------------|-----------------------|
| 1 Canterbury | 5 Wellington |
| 2 Auckland | 6 Central |
| 3 Bay of Plenty | 7 Hawkes Bay/Gisborne |
| 4 Waikato | 8 Midlands |



NEW ZEALAND MASTERS TEAM - Standing (L to R): Jillian Roberts, Barry Gardner, Trevor Colyer, Richard Purser, Donny McQueen, Neville Fyfe, Paul Viggers, Carol Chard.
Seated (L to R): Kaye Jackson, Jenny Webster, Gower Dalimore (Mgr), Kay Newman, Kathryn Austin

TRANS TASMAN JUNIOR BOYS TEST SERIES

1st Test – Matamata 16 May

New Zealand 1 Australia 3
 James Vincent lost to Jhie Gough 0-3
 Sam Atkins lost to Matt Sanders 0-3
 Callum O'Brien beat Simon Carruthers 3-2
 Jared Conning lost to Cameron Pilley 2-3

2nd Test - Thames 17 May

New Zealand 0 Australia 4
 Jared Conning lost to Simon Carruthers 1-3
 Callum O'Brien lost to Cameron Pilley 0-3
 Sam Atkins lost to Jhie Gough 0-3
 Shaun Sansom lost to Matt Sanders 0-3

3rd Test – Hamilton 18 May

New Zealand 0 Australia 4
 Shaun Sansom lost to Jhie Gough 0-3
 James Vincent lost to Matt Sanders 0-3
 Callum O'Brien lost to Simon Carruthers 2-3
 Jared Conning lost to Cameron Pilley 1-3



NZ'S NATIONAL MENS CHAMPIONSHIP
 WINNER - PAUL STEEL

The 2000 title was Steel's ninth consecutive win.

WORLD JUNIOR MEN'S CHAMPIONSHIPS – MILAN, ITALY JULY 2000

Individual Results

Jared Conning	1 st Round		Bye		
	2 nd Round	beat	Luc Ebrard	(France)	3-1
	3 rd Round	beat	Janne Jarvinen	(Finland)	3-0
	4 th Round	lost	Scott Fitzgerald #9/16	(Wales)	0-3
Callum O'Brien	1 st Round	beat	Dong-Woo Kim	(Sth Korea)	3-0
	2 nd Round	beat	Maurizio Goffredo	(Italy)	3-0
	3 rd Round	beat	Marcus Yeap	(Malaysia)	3-1
	4 th Round	lost	Shahid Zaman #5/8	(Pakistan)	0-3
James Vincent	1 st Round	beat	Yves Tastet	(France)	3-0
	2 nd Round	beat	Vinicius Costa	(Brazil)	3-2
	3 rd Round	lost	Laurens Jan Anjema	(Holland)	0-3
Sam Atkins	1 st Round	beat	Alireza Sanaee	(Iran)	3-0
	2 nd Round	beat	Chirag Shah	(Kenya)	3-0
	3 rd Round	lost	Matthew Sanders	(Australia)	0-3

Team Results - Finished 19th

New Zealand 1 Zimbabwe 2
 Callum O'Brien lost to Mark Tavener 0-3
 Jared Conning beat Jesse Englebrecht 3-2
 James Vincent lost to Samson Muhwati 1-3

New Zealand 0 Pakistan 3
 Sam Atkins lost to Farrukh Zaman 1-3
 Jared Conning lost to Shahid Zaman 0-3
 Callum O'Brien lost to Arshade Barki 0-3

New Zealand 3 Kuwait 0
 Sam Atkins beat Bader Al-Husaini 3-0
 Jared Conning beat Mohammed Hajiyah 3-0
 Callum O'Brien beat Ahmed Marzouq 2-0

Play Off 19th/20th

New Zealand 3 Finland 0
 James Vincent beat Janne Koskelin 3-1
 Jared Conning beat Atte Pentilla 3-0
 Callum O'Brien beat Janne Jarvinen 2-0

New Zealand 2 Mexico 1
 Callum O'Brien beat Jorge Baltazar 3-0
 Jared Conning beat Erick Galvez 3-0
 James Vincent lost to Gibran Ruiz 0-3

New Zealand 3 Bermuda 0
 Callum O'Brien beat James Stout 3-0
 Jared Conning beat Michael Stout 3-0
 Sam Atkins beat Stephen Smith 2-0

New Zealand 1 United States of America 2
 Callum O'Brien lost to Pat Molloy 2-3
 Jared Conning beat Richard Repetto 3-0
 Sam Atkins lost to Julian Illingworth 1-3

Grading & Statistics

The Grading System is the major part of the National Club Member Register. At the end of September 2000 it contained 16,906 graded players. In addition, the register contained a further 6,936 leisure / casual club members giving a combined total of 23,842 "registered" club members. This figure is however believed to be substantially below true club membership numbers as indications are that many clubs don't provide Squash NZ with complete details of their "leisure" members.

This is supported by independent research by the Hillary Commission, which indicates that over any 4 week period approximately 65,000 adults participate in the sport of squash and further, that over a 12 month period approximately 123,000 adults participate in the sport of squash. If the 65,000 adult players over a four week period are "regular squash players", and if allowance is made for those using commercial courts, there appears to be a large margin between the "registered club members" and actual regular participants in the sport of squash.

As with recent years, even though a number of clubs are reporting increased membership numbers, overall graded player numbers have fallen slightly over the past season: (Oct 1999 - 17,741; Oct 2000 - 16,906). This is probably due to two factors, firstly that those clubs that are reporting membership increases are placing more emphasis on "participation and enjoyment" (the social side of the sport), with the "new" players are not taking up the competitive challenge, and secondly, that clubs are continuing to be conscientious in the maintenance of their grading lists.

As is the case with all sports, the number of persons participating in the sport squash has a direct bearing on the ability of the sport at all levels to attract outside support and revenue by way of sponsorships and grants from the various sources from which such funds are available.

It cannot be stressed strongly enough that all clubs must ensure that all of their "members", regardless of membership category or the manner

in which the users of their facilities access the club's courts, must be registered with the club, the district and Squash New Zealand. The maintenance of full and complete membership registers of all persons who use club facilities on a regular basis is of immense benefit to the sport, particularly at club level.

The operation of the grading system during the 2000 season saw the continuation of the operational policies of the previous seasons, the prime intention of which has been to gradually achieve a more even spread of players across the B to F grades.

Total Players by Grades (Men & Women combined).

	Oct 2000	Nov. 99	Nov. 98	Nov. 97	Nov. 96	Nov.95	Nov.94	
A1	26 .1%	26	26	29	25	24	20	.1%
A2	171 1.1%	172	191	163	148	131	118	.8%
B	2339 13.8%	2379	2358	2276	2053	1779	877	4.5%
C	3410 20.1%	3498	3560	3719	3765	3829	1558	8.1%
D	3515 20.8%	3755	4055	4396	4766	4989	3234	16.7%
E	4628 27.4%	5117	5502	5863	6247	6282	6242	32.3%
F	2817 16.7%	2535	2896	3054	2956	2677	7297	37.7%
	16,906	17,482	18,588	19,500	19,960	19,711	19,346	

Graded player numbers across all grades continue to show that the policy under which the grading system has been operated for the past few seasons has clearly had the desired effect. The 1994 "bottom end bulge" with 70% of players in E & F grades, has been substantially reduced, with both C and D grade each now having 20% of the players, with B grade having 13% and E grade 27%. This has been achieved via the very careful adjustment and "loading" of the points scales within the grading system to favour the "regular winners" and thereby provide them with a reasonably rapid upward progression.

The increased A2, B and C grade numbers of the past few seasons has continued to have a positive effect on the number of player entries in A, B and C grade tournaments. However it was disappointing



Joelle King - New Zealand U13 Champion

Picture: Caroline Elliotts, Weddarts Times

to see the drop in the number of teams entering the National Graded Club Teams event at a district level in 2000.

Grading committee policy is to continue to maintain the even spread of "club" players across the range of B to E grades.

Age-group statistics over the past eight years provide some interesting figures:

	2000		1999		1997		1993	
Seniors (17 to 34 years)	5,913	35.8%	6,611	37.3%	8,022	40.6%	9,600	45.5%
Masters (35 and over)	9,225	54.0%	9,477	53.4%	10,031	50.7%	10,240	48.5%
Juniors (Under 17)	1,768	10.2%	1,655	9.3%	1,728	8.7%	1,255	6.0%
Totals	16,906		17,743		19,781		21,095	

Numerically, the senior and masters numbers have both fallen, however in terms of percentages, seniors have fallen by 1.5%, of total graded players, while masters have increased by .6% which continues to confirm what is very obvious in most clubs - and ageing adult squash population!

On a slightly brighter note, juniors have increased both numerically and percentage in terms of total graded players. While this in itself is very pleasing to see, the number of juniors entering the sport still appears to be insufficient to replace the natural loss of seniors and masters. It cannot be stressed strongly enough that juniors are the long term future of the sport and every effort must be made to attract and retain new junior players

The publishing of the Grading List on the Squash

NZ website continued during the past season and this continues to be seen as a very positive move by clubs, players and administrator, despite one or two minor problems during the season.

The "prompt collection of results" continues to be the major concern with the overall operation and management of the grading system. Substantial improvements to this area of the grading system are currently being evaluated and if the proposals are considered viable they will provide clubs and districts with the ability to replace a large proportion of the current "paper based" workload with a computer based application. Further, if accepted as practical, the proposals currently being evaluated will also provide the opportunity to "publish" grading lists on a more frequent basis. However, central to the proposals under evaluation is the need to maintain the integrity and security of the grading system and the National Club Member Register. The Squash Grading System continues to be the backbone of competitive squash in New Zealand and the successful operation of the system is due to the considerable input of volunteer time and effort by club and district statisticians and thanks must be extended to them for their work which benefits individual players and the sport of squash as a whole.

STEVE SCOTT
Director - Grading & Statistics



Squash Dynamics

This year has seen two projects completed by Squash Dynamics. From a personal and a professional point of view, it is very satisfying to see new facilities leading a resurgence of interest in the game.

Invercargill

Four ASB system single courts were constructed in the beginning of this year. These courts can convert to three double courts or provide 260 sq. metres of sprung floor area for many uses. Stadium Southland is a multi-sport complex costing \$11 million dollars. It is owned and operated by the Invercargill Licensing Trust and I would like to thank Chairman Ray Harper for including squash courts in the facility. The stadium proper has two timber courts with seating for a possible 2000 people plus five community courts which are constructed of a hard surface that can be used by many sports. The new squash courts are placed prominently in the foyer of the stadium and create a great impression upon entering this complex.

Blenheim

Construction of four ASB system courts was completed in September. One singles court is fixed and the others have two moveable walls to create two doubles courts. These courts are the first in New Zealand to have the sensitive tins that light up and make a buzzer noise when the top of the tin is struck. The complex has three international-sized sprung floor courts, gym, restaurant, swimming pool plus many other sports making this a real multi-use facility. It is owned and operated by the Blenheim Stadium Trust. Again, I want to recognise the contribution of the Chairman, in this case Luke Van Velthoven, who drove the project through to completion.

Other Possibilities

As well as these major construction contracts, Squash Dynamics has been able to assist many clubs with potential future development plans, maintenance of courts, painting court walls, technology developments and finance needs. During the year I have been asked to visit prospective new facility projects in Mangakahia, Waitakere City, Coromandel, Matamata, Tauranga, Rotorua,

Hastings, Kapiti, Wellington, Christchurch, Dunedin and Clinton. This high level of interest suggests that Squash Dynamics is meeting a genuine need in the wider squash community for information and guidance.

Court Repairs

The major maintenance cost for clubs seems to be repairing front walls. Over the next few months Squash Dynamics will be installing a new front wall system from ASB. This is more expensive than plaster but far more permanent and not reliant on the front wall constructed as the playing surface. Hundreds of courts throughout Europe and the United Kingdom are now repaired in this way.

Work in Progress

The Howick Squash Club has a new facility under construction and will have four ASB system courts with two moveable walls to create two doubles courts of 200 sq. m for multi-use. This project, the first by a conventional squash club, has been driven by President Nic Davies, and is due for opening early March 2001.

The National Squash Centre project on the UNITEC campus in Auckland is a joint venture between Squash New Zealand and Squash Auckland. The first stage of construction will provide six ASB system courts and Bruce Davidson, Chairman of the National Squash Centre Trust, can be satisfied to have raised \$1,050,000.00 in public money for the benefit of squash.

A new multi-sport complex is under consideration in Stratford. Part of the process involves an evaluation of whether to include three or four ASB System Courts with movable walls.

Last Word

Overall it has been a very busy year. Among the squash people I have met around the country, men and women who love the game, there is a growing appreciation that modern facilities, well located and well managed, are one of the keys to the future.

NEVEN BARBOUR
Managing Director

National Squash Centre Trust

Conceived as a headquarters for squash, the National Squash Centre is an ambitious project. It owes its life to the generosity of the Auckland clubs which committed \$500,000.00 at a Special General Meeting in September 1999. Squash New Zealand promised \$200,000.00 and the quest for public money began. The vision was to create a state-of-the-art squash facility, a platform capable of taking the sport to a wider audience, showcasing New Zealand's best players at premier tournaments, hosting the Auckland Secondary School and Junior Interclub competitions, and providing a base for the national High Performance programme.

The National Squash Centre Trust was formally established in May this year. Former President of the National Association, Bruce Davidson was elected Chairman and Michael Barnett, Dame Susan Devoy, Ken Rapson, Mike Sumpter, Mike Greig and Andrew Codling accepted invitations to serve as founding trustees. The machinery was in place to go forward.

Design and legal work followed. To advance the project, the trustees approved a staged development, the first stage being six ASB courts, ablutions and

office accommodation at a projected cost of \$1,750,000.00. In October the New Zealand Lottery Grants Board agreed to provide \$175,000.00 and the ASB Charitable Trust approved a grant of \$875,000.00.

As other sports organisations have found, launching a project on this scale requires many hours of meetings, preparation of paperwork, and lobbying of key decision-makers. Securing resource consents, negotiating a Participation Agreement with the joint venture partners, undertaking a public tender process to establish the real price of construction, and a host of other details had to be dealt with before things could move forward. Now, with a probable start-date of January and completion by June 2001, the hard work is paying off.

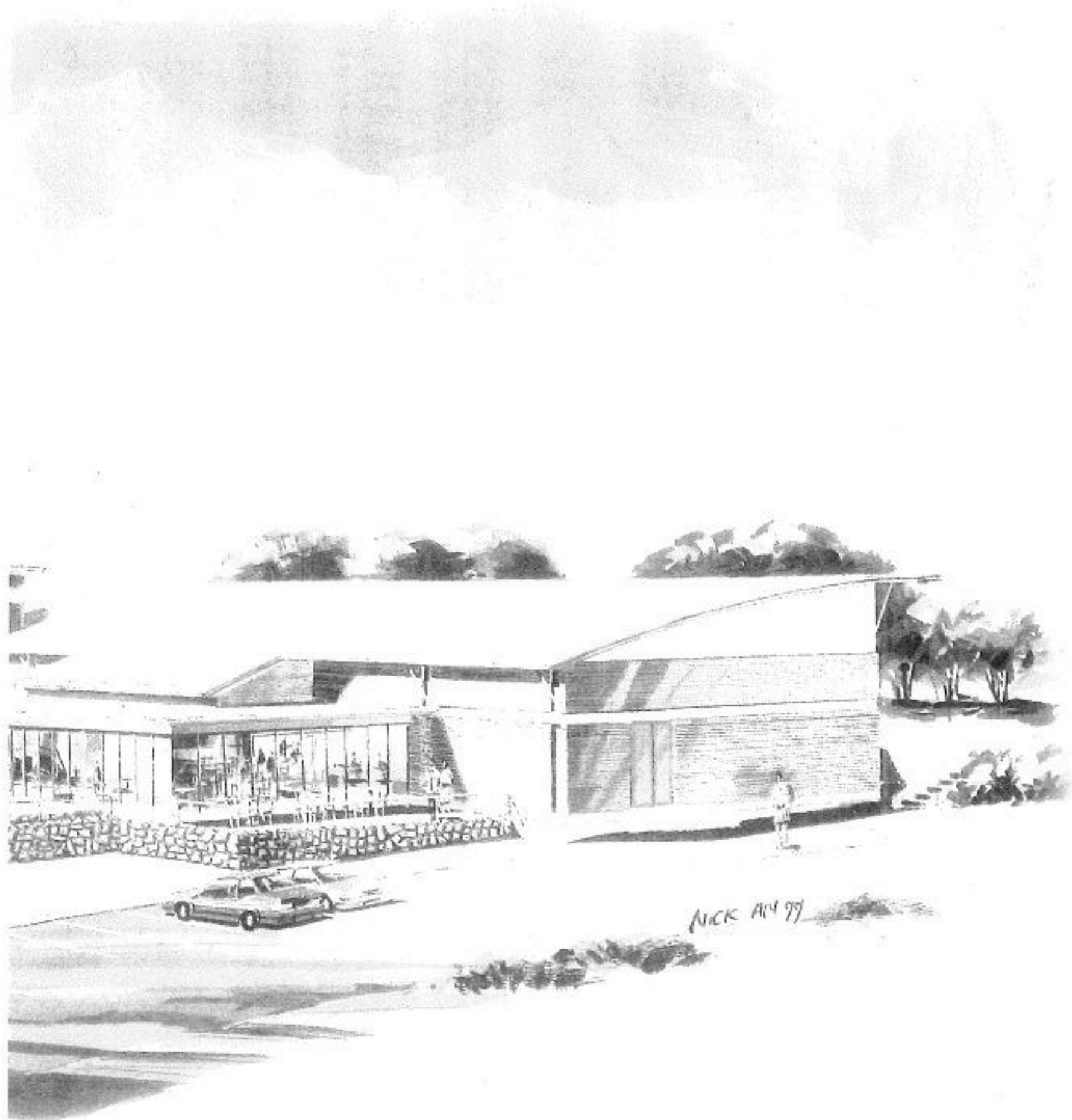
Chairman Bruce Davidson is pleased with the progress to date. "It's painstaking work but it will be a superb facility and I've been grateful for the help of everyone involved so far. I'm looking forward to turning the first sod and perhaps drinking a toast early next year."



Members of the New Zealand PRINCE Academy of Champions



Proposed National Squash Center



Centre at UNITEC, Auckland



LION FOUNDATION
A GAMING MACHINE CHARITABLE TRUST

Lion Foundation 2000 Squash Club of the Year - Squash Palmerston North

Squash Palmerston North has just been awarded the "Lion Foundation Squash Club of the Year". The annual award was announced yesterday by Squash New Zealand.

Squash Palmerston North president Brian Baxter said that the award capped off a great year for the club. "It is also a tangible reward to all those who have contributed to such a great year".

"It was only a couple of year ago that our club was drifting along like many other clubs. We had dwindling membership and dwindling finances. Then we set about reviving our fortunes".

Brian Baxter said that most of what the club has done over the past few years has just been common sense management. "We started by looking after the club finances in a careful and professional way, and involved all the club members in running our club. The culture of the club changed from an old style bar dominated club, to one where families were more a feature. This year we have used the money we built up to make some drastic improvements".

The improvements included a complete renovation to the interior of the club, and the building of a shop. "The key to our turnaround, and to our on-going future success, has been the shop" said Brian Baxter.

"Squash used to be one of those sports where you needed a key to get in the door. And you needed to become a member to get a key. The shop enables us to open the doors to allow anyone who wants to have a game to drop in at any-time to play. We are now a truly public complex, open 7 days a week". Local squash coach Graeme Randolph and his wife Jill lease the shop from the club, and look after the casual players.

"The fact that the club is open all the time also makes it a more attractive and friendly place. We have also re-carpeted and painted the interior to make the place attractive. We have a creche area, and with our glass-back courts the kids and the parents can play while still seeing each other. We have a TV and video in our junior kids lounge for



them to occupy themselves while their parents play."

The club is also in the process of carrying out further improvements. The refurbishment of the interior continues, and the court lights have just been up-graded with the help of a CentralPower Electricity Trust grant. Two more courts are about to have glass-backs put on them, and future plans include a new entrance-way and a gymnasium."

Sponsorship has also been a big success story this year. Holden dealer - Robertson Motors has become the clubs principal sponsor, in a 2 year deal with the club. "We try and make our sponsorship a win-win type situation. The more we support them, the more they support us".

"Our club is now thriving, with a healthy membership and a healthy bank balance. And the \$2,000 cash prize that goes with the Squash Club of the Year award won't hurt our finances."

"All we are doing is common-sense stuff," said Brian Baxter. "Stuff that the sports management experts are telling everybody to do. And it works. There is no special secret to our success. All we are trying to do is make our sport a convenient, available and attractive game for all to play. We are trying to give potential and serious players what they want. And we try to be professional in what we do."

The club has a big year ahead of it next year, hosting the national squash championships in September.



SQUASH PALMERSTON NORTH TOASTING THEIR CLUB'S SUCCESS.

L to R: Graeme Randolph, Pro Shop operator with committee members, Grant Smith, Brian Baxter, Don Carter.

CLUB KELBURN

The Squash New Zealand owned operation in Wellington.





Club Kelburn

In many ways, the last financial year has been the most satisfying for me because ultimately a respectable "bottom line" was achieved but not without some anxiety along the way. By our normal standards, the year started off very poorly, with a disappointing downturn in October. This made for a tough start for the year, and prompted a hard look at what had changed in how we were doing business that might explain the unexpected drop-off in returns.

Essentially it was classic situation. Unless I was personally "on top of the business" every day, out front, meeting the people, responding immediately to opportunities, then the crucial selling job wasn't being done. It meant providing the personal example for my staff. Focus on anything other than core business resulted in reduced income. It was a valuable wake-up call for me but having gone through the analysis, it was possible to find a way forward.

Over the next three months, by putting myself at the shop front at least 50% of the time, we were able to "turn the boat around", and we began to get the excellent results to which we have become accustomed. Consequently, by year-end, we were not only trading as well as we had done the previous year, we had made up the ground we had lost in the first quarter. My key fulltime staff members, Glen Williams and Anna Sneyd, were invaluable in seeing what had happened, and what needed to be done in order for us to get back to our usual trading patterns.

I share this information with any interested readers because it was an important lesson for me, and it showed how easily a business can change for the worse. Top rate, focussed management is the key to successful trading in any business. The bricks and mortar are only the skeleton of the business - it's the people that give it the heart and the muscle to succeed. I believe the same principle is equally true for conventional squash clubs.

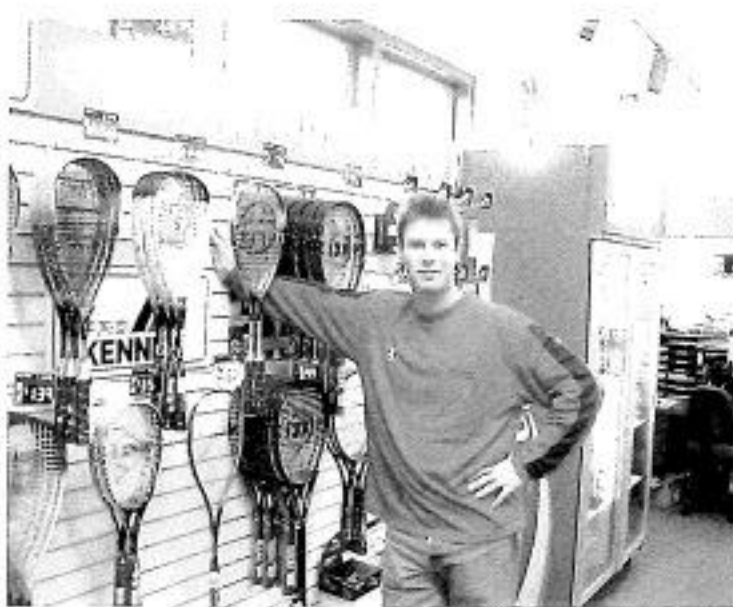
I should add that Squash Week also made a difference. The sport was on nationwide radio and television and suddenly there were new faces at the

counter. It worked. Not only were there new customers coming through the door, but they were of a type - first-time players - and it has been the catalyst for Club Kelburn to develop a new entry-level product, "The Sunday Club." Basically, it involves a two-hour session, between 3.30 - 5.30 p.m. on Sunday afternoons, where beginners get a series of 15 minute hit-outs, with coaching available, rather like a normal Club Night. There is definitely a recreational market out there.

At the end of the year we are able to report a profit of just over \$121,000.00 which equates to around 19% net return against turnover, a fantastic result for any business, and the third year in a row that have achieved this level of return.

My special thanks must go to Neven Barbour, who has helped me whenever I have needed it over the last nearly seven years I have been running Club Kelburn. My enthusiasm for a successful squash-based business hasn't dropped, and I approach the next few years trading at Club K believing that we will continue to promote a first class leisure facility and achieve excellent returns for Squash New Zealand.

ROB WALKER
Manager - Club Kelburn



Masters

I am pleased to report that Masters Squash is very healthy throughout the country and there has been a number of positive developments and encouraging progress over the last year. Membership numbers are on the increase, now 54.6% of nationally graded players (46.3% in 1995), and we now have 3 x A1 and 37 x A2 in the Men's and 1 x A1 and 21 x A2 in the Women's sections. The mens/womens ratio is now almost even with a 57% to 51% split respectively and 63% of these players are contained in the 35 to 45 year age group.

These figures are particularly pleasing because they endorse our Mission Statement:-To encourage the retention of squash players 35 years and over and provide them with social and competitive participation in a friendly and compatible environment.

New Zealand Championships

The 19th Annual Nationals were very efficiently hosted by the Ashburton Club over Labour Weekend and provided the highest standard of squash we have ever seen at this event. The touring Australian team added a touch of class to the championships but local players collected 12 out of the 14 titles contested for. An amazing feature of the entries was that 88% were A to C grade players, 9% were D grade and only 3% were E and F grade. Notable achievements included Jenny Webster winning her 13th national title and Carol Chard and Jill Roberts with 10 and 8 Titles respectively.

The very popular Interdistrict Teams Event was once again closely contested with Canterbury defeating titleholders Auckland on a 17 to 16 game countback after each team had 5 wins each. Emerging high flyers Bay of Plenty defeated Waikato for Third position.

The standard of competition is improving and this year's teams included 90% either A or B grade players.

Kawarua Park has been allocated this event for the 2001 season.

National Club Teams Event

Now in its second year, this event attracted eight North Island teams and was hosted by Hawkes Bay Lawn Tennis Club. Taupo reigned supreme and defeated Lugton Park in the final. The competition was contested in two pools with cross-over ranking matches on the final day. The weekend was thoroughly enjoyed by all participants and there is a strong support from those who attended for the event to continue and for it to grow into a bigger and more widely represented tournament.

The 2001 event has been allocated to the Hamilton Club in an effort to encourage entries from the Auckland District which so far have not been forthcoming.


TransTasman Test Series

A fantastic 3/0 (9/3, 8/4,9/3) series win was achieved by highly motivated Kiwi team in the 13th encounter between the two countries since 1985. Our previous series wins were in 1987 and 1991. The New Zealand team was one of the strongest we have selected and included six current or past world champions and three new caps in Danny McQueen (M35 - 39), Kathryn Austin (W35 - 39) and Paul Viggers (M40 - 44).

Masters Squash is in good heart and has a great future. Our proud record justifies this and in a relatively short time has become a major player in the New Zealand and International Squash scene. Every effort needs to be made for it to remain this way.

In conclusion I would like to acknowledge the work and support carried out by the Masters Committee, District Convenors, National Selectors, and the National Office who have donated a large amount of time over the last year. It has been greatly appreciated.

GOWER DALLIMORE
Director - Masters



Junior/Youth

A New Direction

A number of significant changes were made in the junior national programme for 2000. Major changes include the new Bluebird Junior series and the introduction of the Unitec course into the Squash development programme.

Unitec "Squash"

A major contributor to Junior-Youth development this year was the establishment of the Unitec Course in Auckland for squash players. Although squash is a focus, the over-riding significance for developing players is the opportunity to gain valuable academic and vocational skills that promotes opportunities beyond sport. This holistic development of top performers is likely to achieve the important vision of the academy - 'World Class Athletes, World Class People'.

Bluebird Series

This was a very popular innovation which players of all ages and grades found equally challenging. The rules were also very exciting, grade and age were no advantage. Everyone starts on equal footing and it was the consistency of progress and performance during the season that determined the most successful player. This year, the top award went to U11 player, Amanda Cranston, from Ohakune. Wayne Werder did a great job with the series and we are also very grateful to Bluebird for their support and are delighted to acknowledge their commitment for a second year.

National Awards 2000

The Junior National championships held at the North Shore club hosted over 225 players with four from Hong Kong. Our main national event continues to grow and looks good for the future of the sport. The individual finals went to Jared Conning and Kylie Lindsay, while the teams event went to Auckland, as did the Gifford cup.

The South Island and the North Island Championships were both well supported. For the record it appears that Kylie Lindsay is going to set

a difficult record to match. She is the North, South Island and National U19 champion for the second year running. She is also the U21 champion - and is still U17 - so she has a few more years to try and hold on to those titles. A tremendous achievement indeed.

Concerns

Unfortunately the growth of squash is not without problems for any host club. Keeping the event together is not always easy to manage when you have to resort to two or more venues. Billeting of players also becomes a real problem when numbers escalate. North Shore had to cater for over 54 players, the largest number in recent time. However, other potential host clubs in the country may not have the membership base to support that number of billets. It is still one of the most difficult issues a club has to resolve before it can apply to host a junior event - especially a national event.

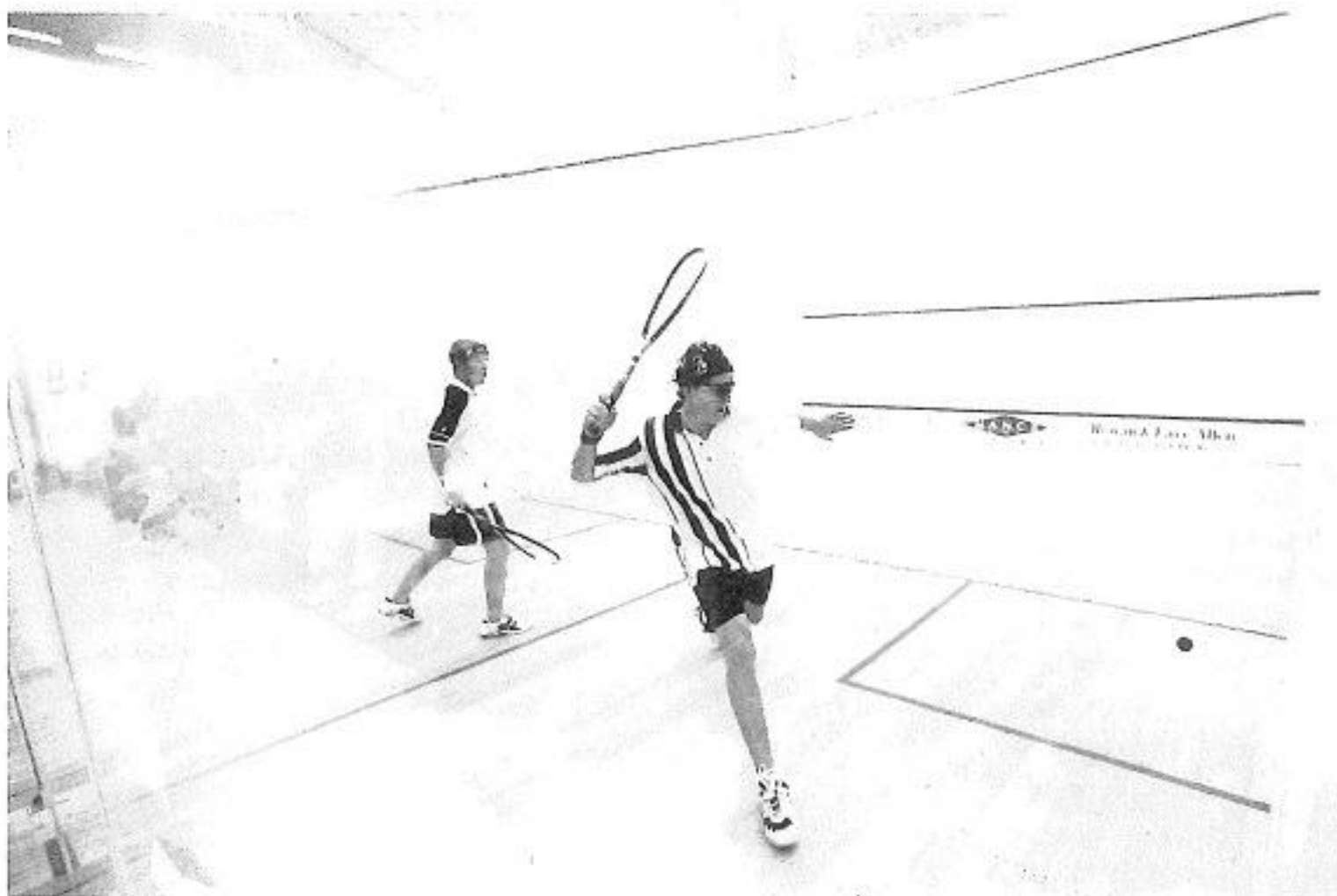
Our gratitude and thanks to Tony McLeod and his team for their successful management and stewardship of the nationals. I hope North Shore squash will give him a year off from any further duties at the club to recover loss of youthful vigor.

Eye-wear

This is no longer a contentious issue but one fully accepted by both players and coaches. It now remains to be seen if the juniors continue with the practice into senior status - and into the coaching arena at all levels? Cost was initially an issue but that is now seen as part of the "package" when you are a squash player.

U21 Programme

At this stage it seems the U21 event is going to be difficult to run next year. The numbers attending (30+) is too small for any club to run as a viable tournament on its own. We have encouraged top players to participate in senior open tournaments as this provides the real yardstick for their progress, now it seems that most are doing just that and perhaps the U21 event is no longer a useful measure



NATIONAL AGE GROUPS CHAMPIONSHIPS MEN'S FINAL - Jared Conning (left) and Callum O'Brien (right).

on its own. I would still like to see the U21 title kept alive by maybe making the senior national championship tournament the place to determine the U21 champion. This is the best place for all aspiring juniors and probably the best place to award the U21 title - alongside the top national champions! Jared Conning has made a successful transition from junior to senior and is ranked at the top in both for the Auckland District. His future progress now depends on the standard that our top seniors and the international squash community can offer.

Attitude and Change

It is pleasing to report that we are making good progress in educating our players to respect each other on the court and the adjudicators of events. In my view there have been fewer on-court incidents to report this year than in previous years. Although "milking the point" is still a favoured option for some players, it stems primarily from poor judgment and lack of experience.

Coaches, Managers and Referees

I would like to conclude this report by acknowledging the part that many of our coaches and managers do for junior squash. In particular the role that Mark Devoy has played in the Waikato District and our own national programme. His contribution will be missed. Many thanks also to all the SDO's and coaches who worked to support the visiting teams from overseas. Much of the work that coaches do at club level is unseen but without it none of the juniors would surface for higher honours. Many thanks also to the national referees who turned out to support our mainland events - especially Doug Flint, Naomi Gunn and Nichol Taylor for their help and attendance.

HANK SCOTT

Director - Junior/Youth Programme

Audit Report

To the readers of the financial report of New Zealand Squash (Inc).

We have audited the financial reports as presented. The financial report provides information about the past financial performance of New Zealand Squash (Inc) and its financial position as at 30 September 2000. This information is stated in accordance with the accounting policies as set out.

Squash New Zealand (Inc) Responsibilities

The Executive Council is responsible for the preparation of the financial report which gives a true and fair view of the financial position of New Zealand Squash (Inc) as at 30 September 2000 and of the results of operations for the year ended 30 September 2000.

Auditor's Responsibilities

It is our responsibility to express an independent opinion on the financial report presented by the Executive Council and report our opinion to you.

Basis of Opinion

An audit includes examining, on a test basis, evidence relevant to the amounts and disclosures in the financial report. It also includes assessing:

1. the significant estimates and judgments made by the Executive Council in the preparation of the financial report, and
2. whether the accounting policies are appropriate to New Zealand Squash (Inc) circumstances, consistently applied and adequately disclosed.

We conducted our audit in accordance with New Zealand Auditing Standards except where our work was limited as explained below. We planned and performed our audit so as to obtain all the information and explanations which we considered necessary in order to provide us with sufficient evidence to obtain reasonable assurance that the financial report is free from material misstatements, whether caused by fraud or error. In forming our opinion we also evaluated the overall adequacy of the presentation of the information in the financial report.

Other than in our capacity as auditors we have no relationship with or interest in New Zealand Squash (Inc).

Qualified Opinion

Control over cash sales for Club Kelburn prior to being recorded is limited. There is no system of control over such sales on which we can rely for the purpose of our audit and there is no satisfactory audit procedures that we can adopt to confirm independently that all cash sales were properly reconciled. In this respect alone we have not obtained all the information and explanation that we have required. In our opinion, except for the adjustments that might have been found to be necessary had we been able to obtain sufficient evidence concerning cash sales at Club Kelburn, the financial report as presented

- complies with generally accepted accounting practices ; and
- gives a true and fair view of the financial position of New Zealand Squash (Inc) as at 30 September 2000 and the results of its operations for the year ended on that date.

Our audit report was completed on 7 November 2000 and our qualified opinion is expressed as at that date.

MCGREGOR BAILEY & CO

7 November, 2000

NEW ZEALAND SQUASH (INC)

Consolidated Statement of Financial Position

for the year ended 30 September 2000

	Note	2000 \$	1999 \$
Accumulated Funds			
Opening Balance as at 1 October		858,884	803,424
Surplus/(Deficit) for the Year		<u>(4,412)</u>	<u>55,460</u>
Total Accumulated Funds		<u>854,472</u>	<u>858,884</u>
Represented By :			
Current Assets			
Cash on Hand		310	310
Current Accounts		18,077	158,960
On Call Accounts		541,464	351,479
Term Deposits		325,354	308,531
Accounts Receivable		248,190	76,771
GST Receivable		-	1,621
Resident Withholding Tax		90	-
Stock on Hand	1	27,126	29,226
Work in Progress	1	-	32,060
Payments in Advance		<u>10,117</u>	<u>-</u>
Total Current Assets		1,170,728	958,958
Investments			
Loans to Clubs	3	<u>20,000</u>	<u>22,500</u>
Total Investments		20,000	22,500
Non-current Assets			
	4	<u>202,450</u>	<u>288,289</u>
Total Assets		1,393,178	1,269,747
Current Liabilities			
Accounts Payable		309,730	184,316
GST Payable		55,852	-
Sundry Accruals	5	85,433	90,433
Income in Advance	6	22,000	57,000
Current Portion - UDC Lease	7	<u>14,669</u>	<u>13,424</u>
Total Current Liabilities		487,684	345,173
Term Liabilities			
UDC - Photocopier Lease	7	<u>51,022</u>	<u>65,690</u>
Total Term Liabilities		51,022	65,690
Total Liabilities		<u>538,706</u>	<u>410,863</u>
Net Assets		<u>854,472</u>	<u>858,884</u>

NEW ZEALAND SQUASH (INC)

Consolidated Statement of Financial Performance

for the year ended 30 September 2000

	Note	2000 \$	1999 \$
Income			
Levies & Subscriptions			
Affiliation Levies	8	435,885	414,562
Grading Levies		14,458	20,436
Associate Memberships		7,858	8,462
Total Levies & Subscriptions		<u>458,201</u>	<u>443,460</u>
Public Sector Grants			
NZSF Academy/Sport '2000'		165,000	150,000
ANZSEP		35,000	29,860
NZSF - Personal		15,700	8,750
NZSF - General		26,934	123,245
Hillary Commission National Funding		131,250	136,313
Total Public Sector Grants		<u>373,884</u>	<u>448,168</u>
Other Grants			
Mitchell Trust		8,001	6,549
SFRITO		-	59,000
Total Other Grants		<u>8,001</u>	<u>65,549</u>
Sponsorships			
		75,073	42,684
Investments			
Club Kelburn	9	121,489	114,160
Squash Dynamics Limited	10	(4,593)	(35,825)
Interest Received		21,688	19,883
Total Other Income		<u>138,584</u>	<u>98,218</u>
Total Income		<u><u>1,053,743</u></u>	<u><u>1,098,079</u></u>



NEW ZEALAND SQUASH (INC)

Consolidated Statement of Financial Performance

for the year ended 30 September 2000

	Note	2000 \$	1999 \$
Expenditure			
Management & Operations			
Governance		50,772	61,668
Salaries & Fees		205,492	206,185
Overheads		36,458	77,355
Total Management & Operations		<u>292,722</u>	<u>345,208</u>
Promotion & Marketing		103,805	66,131
Regional Development		209,728	134,368
Education & Development		34,125	91,407
Gradings & Rankings		37,836	45,218
National Events		15,107	43,181
High Performance Programme		278,604	297,144
National Squash Centre Grant		50,000	-
Total Expenses		1,021,927	1,022,657
Depreciation		<u>36,228</u>	<u>19,962</u>
Total Expenses after Depreciation		<u>1,058,155</u>	<u>1,042,619</u>
Net Surplus / (Deficit) for the Year		<u>(4,412)</u>	<u>55,460</u>

Notes to the Financial Accounts

for the year ending 30 September 2000

Statement of Responsibility

As Chairman and Chief Executive Officer of New Zealand Squash (Inc), we accept responsibility for the preparation of these financial statements. The statements have been prepared in accordance with generally accepted accounting practices. As part of the Association's financial management systems, effective controls have been implemented and maintained to provide reasonable assurance as to the integrity and reliability of financial reporting. We are satisfied that these financial statements fairly reflect the financial position and operation of the Association for the reporting period.

DAVID BASSETT Chairman**DAVID KNOWLES** Chief Executive**I - ACCOUNTING POLICIES****Statement of Accounting Policies****Differential Reporting**

New Zealand Squash (Inc) is the New Zealand national sporting organisation responsible for the control, advancement and regulation of the game of squash throughout New Zealand. New Zealand Squash (Inc) is incorporated under the Incorporated Societies Act 1908.

The Association qualifies for differential reporting as it is not publicly accountable and does not qualify as "large", as defined within the Institute of Chartered Accountants of New Zealand's framework for differential reporting. The entity has taken advantage of all the differential reporting exemptions available to it.

Measurement Base

The accounting principles recognised as appropriate for the measurement and reporting of earnings and financial position on an historical cost basis have been followed. Accrual accounting is used to match income and expenditure.

Specific Accounting Policies

The following specific accounting policies which materially affect the measurement of financial performance, and of financial position have been applied:

Operating Leases

Operating lease payments, where the lessors effectively retain substantially all the risks and benefits of ownership of the leased items, are included in the determination of operating profit in equal installments over the term of the lease (refer Note 11).

Finance Leases

The Association leases certain office equipment. Finance leases, which effectively transfer to the entity substantially all the risks and benefits incidental to ownership over the lease term, are capitalised at the present value of the minimum lease payments. The lease assets and corresponding liabilities are disclosed and the leased assets are depreciated using the maximum rates allowable by the Income Tax Act 1994.

Stock

Stock has been valued at the lower of cost or net realisable value. Due allowance has been made for slow moving stock.

Goods & Services Tax

The financial statements have been prepared on a GST exclusive basis.

Construction Contracts

Profits on construction contracts are determined using the percentage of completion method. Profits are recognised only when the outcome can be reliably estimated.

Foreseeable losses on a contract are recognised immediately.

Fixed Assets

All fixed assets are recorded at cost less accumulated depreciation to date. Depreciation has been provided at the maximum rates permitted by the Income Tax Act 1994.

Investments

Investments are loans advanced to clubs for renovations and development and are stated at cost.

Changes in Accounting Policies

There have been no changes in accounting policies. All policies have been applied on a basis consistent with those used in previous years.

2 - INVENTORY COMMITMENTS

No inventories are specifically and separately pledged as security for liabilities. Inventory is subject to retention of title clauses.

3 - INVESTMENTS

Herne Bay Ponsonby Rackets Club (Inc)	\$20,000
<i>Advancement Date:</i>	12 June 1996
<i>Terms:</i>	Original Term Five Years increased to 7 Years
<i>Repayment Date:</i>	Original Date of Repayment 12 June 2001 extended to 12 June 2003
<i>Interest Rate:</i>	10% per annum
<i>Security:</i>	The advance is covered by an "Instrument by way of Security" dated 7 August 1996"

4 - FIXED ASSET & DEPRECIATION SCHEDULE

Description	Cost	Opening Book Value	Additions / (Disposals)	Depreciation	Accumulated Depreciation	Closing Book Value
Trophies	500	500	-	-	-	500
Motor Vehicles	32,992	11,269	-	2,122	23,845	9,147
Plant, Equip & Fittings	288,696	127,873	15,319	38,839	199,661	104,354
Computer Software	9,801	5,014	-	2,407	7,194	2,607
Sports Equipment	126,073	43,957	5,022	17,052	99,169	31,926
Buildings	650,402	46,882	-	32,520	636,040	14,362
Leasehold Improvements	157,628	52,793	4,299	17,538	122,373	39,554
Total	1,266,092	288,288	24,640	110,478	1,088,282	202,450

5 - SUNDRY ACCRUALS

	2000	1999
High Performance Programme	25,000	25,000
Regional Development Programme	60,000	65,000
Club Kelburn Café Rental	433	433
Total Sundry Accruals	85,433	90,433

6 - INCOME IN ADVANCE

	2000	1999
Hillary Commission Grants	20,000	20,000
NZSF - Grants	-	25,000
Sponsorships	-	8,000
Lion Foundation Grant	2,000	4,000
Total Income in Advance	22,000	57,000

7 - FINANCE LEASE

Finance leases are secured over the assets they relate to. Interest rates on the outstanding lease agreement is 8.9%. This rate is fixed through the life of the lease. The term of the lease is 60 months with the lease expiring 4 September 2004.

The lease is repayable as follows :

	2000	1999
Current Liability	14,669	13,424
Non - Current Liability	51,022	65,690
Total Finance Lease Obligations	65,691	79,114

8 - LEVIES & SUBSCRIPTIONS

Affiliation levy income for the 2000 year was calculated on an SEM rate of \$26.00 plus GST.

9 - CLUB KELBURN

The following is a summarised Statement of Financial Performance for Club Kelburn for the year ended 30 September 2000 :

	2000	1999
Income :		
Trading Profits	97,194	95,635
Court Fees	206,514	222,384
Gear Hire	11,767	10,413
Gym, Aerobics, Sauna & Sunbed	179,035	167,692
Restaurant Rental	6,550	5,200
Sponsorship & Promotion	4,116	4,519
Interest Received	10,519	6,874
Other Income	10,004	4,983
Total Income	525,699	517,700
Less : Expenditure		
Bank Fees	3,735	4,217
Depreciation	73,250	79,099
Insurance	8,008	7,510
Management & Sundry	232,073	232,570
Power & Utilities	29,474	26,402
Rent & Rates	33,275	40,781
Repairs & Maintenance	24,395	12,961
Total Expenditure	404,210	403,540
Net Surplus	121,489	114,160

10 - SQUASH DYNAMICS

The following is a summarised Statement of Financial Performance for Squash Dynamics Limited for the year ended 30 September 2000 :

	2000	1999
Net Contract Income	85,699	32,060
Less : Expenses		
Advertising and Promotion	-	3,914
Depreciation	1,003	-
Insurance	2,346	-
Management & Contract Fees	59,479	38,500
Operational Expenses	12,147	11,389
Professional Fees	8,894	5,217
Travel & Accommodation	6,882	8,865
Total Expenses	90,751	67,885
Net Operating Surplus / (Deficit)	(5,052)	(35,825)
Plus : Interest Income	459	-
Net Surplus / (Deficit)	(4,593)	-

11 - CAPITAL & LEASE COMMITMENTS

Capital Commitments

There is no capital expenditure contracted for at Balance Date

Operating Lease Commitments

Lease commitments under non-cancelable operating leases :

	2000	1999
Current	54,267	54,267
Non-current	112,093	142,946
Total	166,360	197,213

12 - CONTINGENT LIABILITIES

New Zealand Squash (Inc) had no contingent liabilities as at 30 September 2000.

Membership Returns 2000

Club	Senior Men	Senior Women	Junior Men	Junior Women	Others	Total
NORTHLAND						
Bream Bay	12	2	3	0	3	20
Dargaville	25	18	5	1	1	50
Doubtless Bay	25	21	1	2	0	49
Kaikohe	NO RETURN					
Kaitaia	44	18	1	0	16	79
Kamo	44	35	15	4	0	98
Kerikeri	32	16	3	2	0	53
Manaia	18	14	7	5	3	47
Mangakahia	NO RETURN					
Maungaturoto	27	5	1	1	0	34
Mid Western	26	11	8	1	3	49
Southern (Te Kopuru)	46	25	8	3	0	82
Waipu	21	14	17	12	0	64
Warkworth	NO RETURN					
Wellsford	36	39	19	16	1	111
Whangarei	62	31	11	6	21	131
TOTAL	418	249	99	53	48	867
AUCKLAND						
Auckland University	29	18	0	0	30	77
Belmont Park	40	29	29	6	30	134
Browns Bay	135	56	27	11	41	270
College Rifles	48	6	3	3	69	129
Devonport	26	8	6	0	13	53
Eden Epsom	151	88	42	9	47	337
Ellerslie	71	27	1	1	38	138
Frankin	80	32	14	2	0	128
Grammar	47	7	1	1	0	56
Henderson	156	53	42	27	62	340
Herne Bay	174	65	17	9	56	321
Howick	64	21	28	4	40	157
Kumeu	36	11	9	4	0	60
Manurewa	80	47	19	14	15	175
Maramarua	21	18	11	9	20	79
Mercer	7	5	0	0	30	42
North Shore	159	43	31	13	151	397
Panmure	131	53	25	15	53	277
Papakura	79	25	27	16	0	147
Papatoetoe	10	5	0	0	26	41
Red Beach	20	13	6	9	48	96
Remuera	124	53	37	18	85	317
RNZ AF	14	5	0	0	0	19
RNZ Navy	16	8	0	1	2	27
Royal Oak	108	65	3	1	57	234
Shepherds Park	21	13	1	1	0	36
Silverdale	33	16	1	0	1	51
Te Papapa	31	15	1	2	9	58
Titirangi	136	32	18	7	23	216
Waiuku	38	25	28	16	11	118
Weymouth	49	26	2	0	30	107
TOTAL	2134	888	429	199	987	4637

Club	Senior Men	Senior Women	Junior Men	Junior Women	Others	Total
WAIKATO						
Aria				NO RETURN		
Cambridge				NO RETURN		
Frankton	47	33	2	0	14	96
Hamilton OB	25	25	0	0	20	70
Hamilton T & SC	208	66	51	26	50	401
Huntly	16	16	1	1	17	51
Leamington	38	28	7	3	0	76
Lugton Park	58	40	7	2	30	137
Matamata	0	0	0	0	0	0
Mercury Bay	20	14	0	0	0	34
Morrinsville Sport	9	0	0	0	0	9
Morrinsville	49	28	18	9	26	130
Ngaruawahia	20	12	2	1	0	35
Otorohanga	50	35	23	17	84	209
Paeroa	37	22	3	2	15	79
Ruakura	31	28	0	0	41	100
Taumarunui	48	24	10	7	11	100
Taupiri	29	11	1	4	7	52
Te Aroha	36	25	1	1	40	103
Te Awamutu						
Te Kauwhata	20	7	5	2	24	58
Te Kuiti	0	0	0	0	0	0
Te Pahu	20	14	0	1	19	54
Te Rapa	31	25	1	4	20	81
Thames	64	46	31	14	6	161
United Matamata	40	26	2	0	2	70
Waihi	28	21	7	1	32	89
Waikato Hospital				NO RETURN		
Waitomo				NO RETURN		
Whangamata				NO RETURN		
TOTAL	924	546	172	95	457	2195

BAY OF PLENTY

Edgecumbe	53	39	23	17	0	132
Galatea	23	7	21	7	19	77
Geysers City	59	27	17	6	94	203
Katikati	54	32	10	10	4	110
Kawerau	20	9	8	10	5	52
Lakes High	45	23	8	9	3	88
Marist	34	21	11	5	3	74
Mount Maunganui				NO RETURN		
Putaruru	33	27	30	21	22	133
Reporoa	22	15	10	4	37	88
Taneatua	43	26	8	1	0	78
Taupo	68	44	33	26	0	171
Tauranga	133	82	18	27	62	322
Te Puke	87	57	35	28	0	207
Tokoroa				NO RETURN		
Waikite Valley	35	8	9	5	38	95
Whakatane				NO RETURN		
TOTAL	709	417	241	176	287	1830

Club	Senior Men	Senior Women	Junior Men	Junior Women	Others	Total
HAWKES BAY/GISBORNE						
Gisborne HSOB	12	10	7	9	40	78
Gisborne	35	22	5	3	43	108
Hastings	48	23	3	0	0	74
Havelock North						
			NO RETURN			
Hawkes Bay LT	70	26	6	0	0	102
Hawkes Bay	127	53	8	2	20	210
Takapau	19	13	2	4	2	40
Waerenga-a-hika	52	38	36	31	0	157
Waikare	5	10	1	0	0	16
Waipukurau	17	10	11	3	6	47
TOTAL	385	205	79	52	III	832
CENTRAL						
Ashhurst Pohangina	34	28	7	4	0	73
Dannevirke	25	27	7	1	11	71
Eltham	30	17	2	1	3	53
Feilding	36	19	21	9	17	102
Foxton	9	6	2	1	28	46
Hawera	83	47	10	11	7	158
Inglewood	53	30	20	8	4	115
Kawarua Park	106	57	29	11	115	318
Levin	20	11	0	0	53	84
Massey University	5	2	0	0	0	7
Ohakea	1	0	0	0	0	1
Ohakune	52	41	43	25	0	161
Okato	44	40	42	28	26	180
Opunake	26	24	3	2	0	55
Palmerston North	106	54	23	21	38	242
Patea						
			NO RETURN			
Puketoi	19	11	9	5	1	45
Rangitikei	59	30	14	8	10	121
Stratford	33	31	4	1	15	84
Taihape	29	13	5	12	16	75
Tararua	38	33	17	5	0	93
Turangi	30	21	3	4	4	62
Waitara	40	21	18	2	12	93
Wanganui	90	38	10	7	50	195
Wanganui TCOB	30	16	0	1	56	103
TOTAL	998	617	289	167	466	2537

Club	Senior Men	Senior Women	Junior Men	Junior Women	Others	Total
WELLINGTON						
Celtic	26	21	2	1	9	59
Collegians	105	69	43	16	27	260
Fraser Park	45	23	4	7	43	122
Howard Booth Park	22	6	12	12	3	55
Island Bay	51	23	7	8	25	114
Kapiti	44	20	37	19	43	163
Khandallah	NO RETURN					
Maidstone	64	26	19	13	1	123
Mana	89	57	36	22	55	259
Marlborough College	NO RETURN					
Marlborough	38	17	3	1	41	100
Martinborough	19	8	3	1	13	44
Masterton	61	50	33	18	16	178
Mitchell Park	125	31	15	13	54	238
Motueka	22	15	3	1	21	62
Nelson	149	59	30	9	124	371
Northern	41	24	2	1	0	68
Otaki	16	7	1	0	2	26
Red Star	52	30	9	5	7	103
Tawa	117	69	67	12	23	288
The Thorndon Club	121	21	0	1	0	143
Upper Hutt	79	10	20	11	31	151
Waikanae	8	7	14	8	42	79
Waimea T & C	87	35	13	8	0	143
Wainuiomata	50	35	12	10	8	115
Woodbourne	17	10	0	0	0	27
TOTAL	1426	667	373	185	585	3236

Club	Senior Men	Senior Women	Junior Men	Junior Women	Others	Total
OTAGO						
Alexandra	59	42	18	12	6	137
Clutha	22	18	12	6	19	77
Cromwell	33	25	4	4	3	69
Fernhill	13	0	0	0	5	18
Logan Park	63	38	5	3	16	125
Maniototo	11	13	0	0	0	24
North End	38	20	0	0	7	65
Omakau	22	9	0	0	5	36
Otago	68	49	20	13	25	175
Otago University	33	13	3	2	49	100
Palmerston	6	13	0	0	0	19
Pirates	42	15	0	0	25	82
Queenstown	32	7	1	1	24	65
Roxburgh & Districts	10	6	10	5	13	44
Southern	28	34	0	0	16	78
Sunnyvale	29	6	1	1	4	41
Taiari	56	49	5	1	17	128
Toko	22	11	4	3	2	42
Wanaka	31	22	1	0	0	54
TOTAL	618	390	84	51	236	1379

SOUTHLAND						
Balfour	12	19	0	0	0	31
Central Southland	34	28	14	10	20	106
Clinton Community	30	27	23	14	49	143
Dipton	9	9	0	0	9	27
Fiordland	33	26	8	7	0	74
Gore	17	11	2	1	122	153
Gore T & C	9	6	0	0	0	15
Gorge Road	9	9	0	3	0	21
Heriot	13	20	1	0	4	38
Lumsden	5	2	0	0	17	24
Makarewa	29	11	0	0	1	41
Mossburn	12	16	0	1	0	29
Nightcaps						
Otautau	55	32	22	14	34	157
Riversdale	21	13	4	1	9	48
Squash City	61	44	13	9	67	194
Tapanui & Dist	23	16	4	1	3	47
Waiau	14	15	0	1	10	40
Waikaia	19	11	0	0	0	30
Waikaka	17	22	2	1	1	43
Wyndham	19	23	2	2	0	46
TOTAL	441	360	95	65	346	1307

NO RETURN

Squash New Zealand wishes to acknowledge the following sponsors:

